

Figure 22: Orifice set

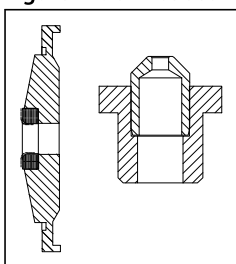


Table 20: Orifice set

Type	Code no.	Contents
AKVA 20-0.6	068F5270	Main orifice, dia. 8 mm Pilot orifice, dia. 1.8 mm 2 pcs. Al. gaskets O-ring
AKVA 20-1	068F5270	
AKVA 20-2	068F5270	
AKVA 20-3	068F5270	
AKVA 20-4	068F5271	
AKVA 20-5	068F5271	Main orifice, dia. 14 mm Pilot orifice, dia. 2.4 mm 2 pcs. Al. gaskets O-ring

Table 21: Gasket set

Type	Code no.	Contents
Gasket set	042H0160	Complete gasket set for new and old valves

Figure 23: Upper part

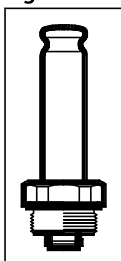


Table 22: Upper part

Code no.	Contents
068F5045	1 pcs. armature 1 pcs. armature tube 1 pcs. Al. gasket

Coils for AKVA valves

Table 23: Coils for AKVA valves

D.C. coils	Code no.	AKVA	AKVA	AKVA	AKVA	AKVA	AKVA
		10-1	10-6	10-7	15-1	20-1	20-4
				10-8	15-2	20-2	20-5
					15-3	20-3	
					15-4		
220 V DC 20 W, standard with terminal box	018F6851	+	+	+	+	+	+
100 V DC 18 W, special with terminal box with DIN plugs	018F6780	+	+	+	+	+	+
230 V DC 18 W, special with terminal box with DIN plugs	018F6781 ⁽¹⁾	+	+	+	+	+	+
	018F6991 ⁽¹⁾						
230 V DC 18 W, special with 2.5 m cable with 4.0 m cable with 8.0 m cable	018F6288 ⁽¹⁾						
	018F6278 ⁽¹⁾	+	+	+	+	+	+
	018F6279 ⁽¹⁾						

Electric expansion valves, Type AKVA 10, AKVA 15 & AKVA 20

⁽¹⁾ Recommended for commercial refrigeration plant

Table 24: Coils for AKVA valves

A.C. coils	Code no.	AKVA	AKVA	AKVA	AKVA	AKVA	AKVA
		10-1	10-6	10-7	15-1	20-1	20-4
		10-2		10-8	15-2	20-2	20-5
		10-3			15-3	20-3	
		10-4			15-4		
		10-5					
240 V AC 10 W, 50 Hz with terminal box with DIN plugs	018F6702						
	018F6177	+	+	-	+	-	-
240 V AC 10 W, 60 Hz with terminal box with DIN plugs	018F6713	+	+	-	+	-	-
240 V a.c. 12 W, 50 Hz with terminal box	018F6802	+	+	+	+	+	-
220 V AC 10 W, 50 Hz with terminal box with DIN plugs	018F6701	+	+	-	+	-	-
	018F6176	+	+	-	+	-	-
220 V a.c. 10 W, 60 Hz with terminal box with DIN plugs	018F6714	+	+	-	+	-	-
	018F6189	+	+	-	+	-	-
220 V AC 12 W, 50 Hz with terminal box	018F6801	+	+	-	+	+	-
220 V a.c. 12 W, 60 Hz with terminal box	018F6814	+	+	-	+	+	-
115 V AC 10 W, 50 Hz with terminal box with DIN plugs	018F6711	+	+	-	+	-	-
	018F6186	+	+	-	+	-	-
115 V AC 10 W, 60 Hz with terminal box with DIN plugs	018F6710	+	+	-	+	-	-
	018F6185	+	+	-	+	-	-
110 V a.c. 12 W, 50 Hz with terminal box	018F6811	+	+	-	+	+	-
110 V a.c. 12 W, 60 Hz with terminal box	018F6813	+	+	-	+	+	-
24 V AC 10 W, 50 Hz with terminal box with DIN plugs	018F6707	+	-	-	+	-	-
	018F6182	+	-	-	+	-	-
24 V AC 10 W, 60 Hz with terminal box with DIN plugs	018F6715	+	-	-	+	-	-
24 V AC 12 W, 50 Hz with terminal box	018F6807	+	-	-	+	+	+
24 V AC 12 W, 60 Hz with terminal box	018F6815	+	-	-	+	+	+
24 V AC 20 W, 50 Hz with terminal box	018F6901	+	+	+	+	+	+
24 V AC 20 W, 60 Hz with terminal box	018F6902	+	+	+	+	+	+