

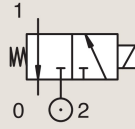
# 3/2

## ELECTROVANNES POUR AIR SEC OU LUBRIFIÉ, GAZ ET LIQUIDES NEUTRES COMMANDE DIRECTE

LAITON

MONTAGE SUR EMBASE

**FERMÉE HORS TENSION**



Raccord	Orifice Ø		Facteur d'Écoulement				Pression Différentielle			Temp. Fluide		Joint	Electrovannes PARKER LUCIFER®			IS	Puissance		Groupe Electrique	N° Schéma
	1	(2)	1	(2)	1	(2)	Min	Max		Min	Max		Ref. Valve	Ref. Boîtier	Ref. Bobine		AC W	DC W		
	mm		Kv l/min		KV m³/h		bar	AC bar	DC bar	°C	°C									
SB	1.2	1.5	0.7	0.9	0.04	0.05	0	10	10	-10	75	FKM	131M75	8993	488980		2	2.5	1.1	3383
	1.2	1.5	0.7	0.9	0.04	0.05	0	10	10	-10	75	FKM	131M7550 <sub>1</sub>	8993	488980		2	2.5	1.1	3383
	1.5	1.5	0.9	0.9	0.05	0.05	0	7	7	-10	75	FKM	131M74	8993	488980		2	2.5	1.1	3383
	1.5	1.5	0.9	0.9	0.05	0.05	0	7	7	-10	75	FKM	131M7450 <sub>1</sub>	8993	488980		2	2.5	1.1	3383
	1	1	0.6	0.6	0.03	0.03	0	-	10	-10	75	FKM	131F4490	2995	483580.01	*	-	0.5 to 3	7.0/8.0	7057
	1	1	0.6	0.6	0.03	0.03	0	-	10	-10	75	FKM	131F4490	-	488660.01	*	-	0.3 to 3	7.0/8.0	7057
	1	1	0.6	0.6	0.03	0.03	0	-	10	-10	75	FKM	131F4490	-	495910	*	-	0.3 to 3	7.0/8.0	7057
	1.5	2	1.5	2.2	0.09	0.13	0	-	16	-10	100	FKM	131F4410	2995	481865		-	9	2.1	3509
	1.5	1.5	1.5	1.5	0.09	0.09	0	-	7	-20	75	PUR	131F4497	2995	482740		-	1.6	6.0/8.0	8022
	1.5	1.5	1.5	1.5	0.09	0.09	0	7	7	-20	75	PUR	131F4497	-	495900		2.5	2	6.0/8.0	8022
	1.5	1.5	1.5	1.5	0.09	0.09	0	-	7	-20	75	PUR	131F4497	-	495910	*	-	0.3 to 3	6.0/8.0	8022
	1.5	1.5	1.5	1.5	0.09	0.09	0	-	7	-20	75	PUR	131F4497	2995	496125		-	1.6	6.0/8.0	8022

**Notes:**

1. Avec Commande manuelle

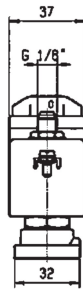
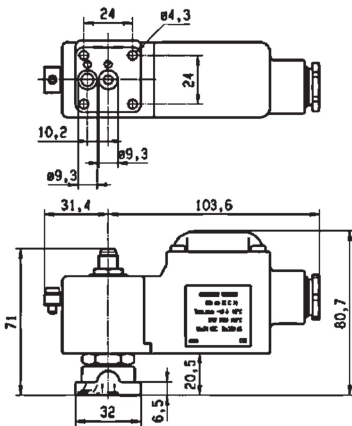


Schéma 8022





Dans cette page	Raccord	Orifice (mm)	Kv (l/min)	Pression Diff. Max. (bar)	Temp. Fluide (°C)	Temp. Amb. (°C)
de	SB	1	0.6	7	-20	-20
à	SB	1.5	1.5	16	100	50

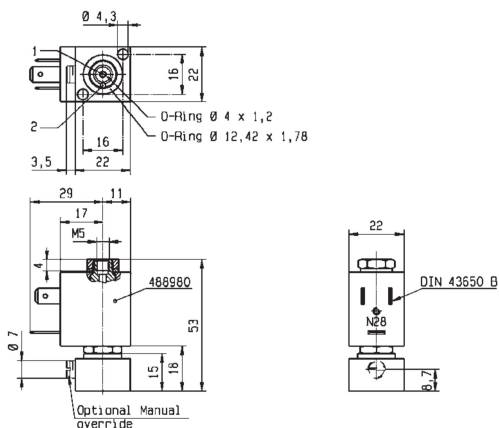


Schéma 3383

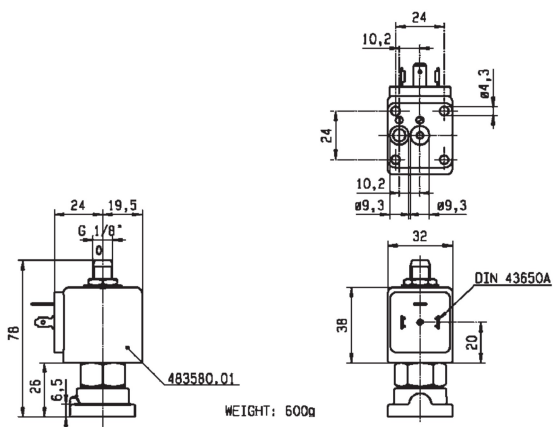


Schéma 7057

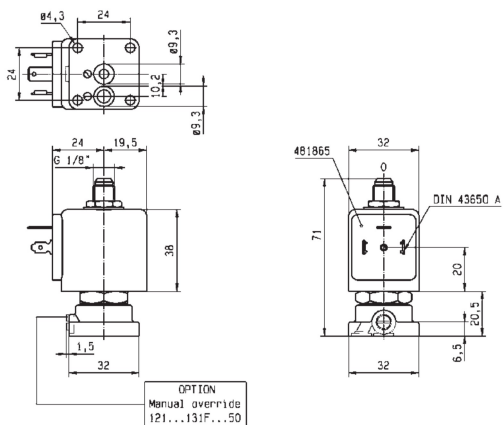


Schéma 3509