

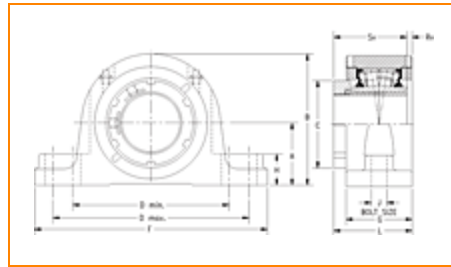
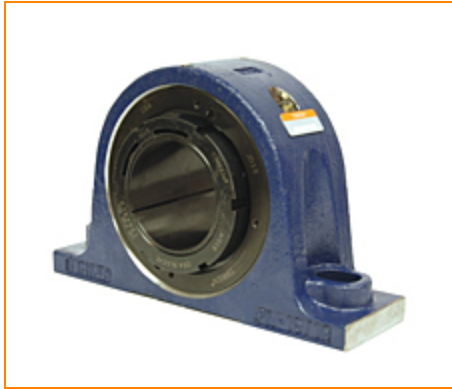
**TIMKEN****The Timken Company**

4500 Mt Pleasant St. NW

N. Canton, OH 44720

**Phone:** (234) 262-3000**E-Mail:** [CustomerCAD@timken.com](mailto:CustomerCAD@timken.com) • **Web site:** [www.timken.com](http://www.timken.com)

Timken Part Number QVSN11V050S, Single V-Lock Two-Bolt Pillow Block



[Specifications](#) | [Dimensions](#) | [Radial and Thrust Factors](#) | [Engineering Seal Speed](#) | [Engineering Bearing Attributes](#) | [Engineering Internal Radial Clearance](#)

## Specifications

**Engineering Group** Mounted Bearing

**Bearing Number** 22211

**Shaft Size** 50 mm

**Shaft Size Type** Metric

**Full Timken Part Number**

- QVSN11V050SB
- QVSN11V050SC
- QVSN11V050SEB
- QVSN11V050SEC
- QVSN11V050SEM
- QVSN11V050SEN
- QVSN11V050SEO
- QVSN11V050SET
- QVSN11V050SM
- QVSN11V050SN
- QVSN11V050SO
- QVSN11V050ST

<b>Locking Style</b>	Single V-Lock
<b>Weight</b>	18.000 lb 8.4 Kg
<b>Housing Construction</b>	Two-Bolt Pillow Block
<b>UPC Code</b>	0883450097543 0883450098212 0883450107600 0883450107792 0883450114462 0883450114660 0883450129060 0883450129695 0883450138116 0883450138246 0883450357791 0883450357920

## Dimensions

<b>Dimension A</b>	2.76 in 70.0 mm
<b>Dimension B</b>	5.35 in 136.0 mm
<b>Dimension C</b>	2.99 in 76.0 mm
<b>Dimension D Max</b>	8.50 in 216.0 mm
<b>Dimension D Min</b>	7.20 in 183.0 mm
<b>Dimension F</b>	10.00 in 254.0 mm
<b>Dimension G</b>	2.680 in 68.00 mm
<b>Dimension H</b>	1.00 in 25.0 mm

<b>Dimension J (Bolt Size)</b>	0.625 in 16 mm
<b>Dimension L</b>	3.35 in 85.0 mm
<b>Dimension RV</b>	0.21 in 5.3 mm
<b>Dimension SV</b>	3.14 in 79.8 mm

### Radial and Thrust Factors

<b>C0 - Static Load</b>	31900 lb 142 kN
<b>C - Dynamic Load (Basic)</b>	31400 lb 140 kN
<b>e - Geometry Factor</b>	0.23
<b>Y1 - Geometry Factor</b>	2.95
<b>Y2 - Geometry Factor</b>	4.40

### Engineering Seal Speed

<b>Oil Lubrication - M/N Seal</b>	2200 rpm
<b>Oil Lubrication - T Seal</b>	3800 rpm
<b>Oil Lubrication - B/C/O Seal</b>	1800 rpm
<b>Grease Lubrication - M/N Seal</b>	2200 rpm
<b>Grease Lubrication - T Seal</b>	3200 rpm
<b>Grease Lubrication - B/C/O Seal</b>	1600 rpm

### Engineering Bearing Attributes

<b>Float</b>	0.050 in 1.270 mm
--------------	----------------------

<b>Shaft Tolerance</b>	0.0015 in 0.038 mm
------------------------	-----------------------

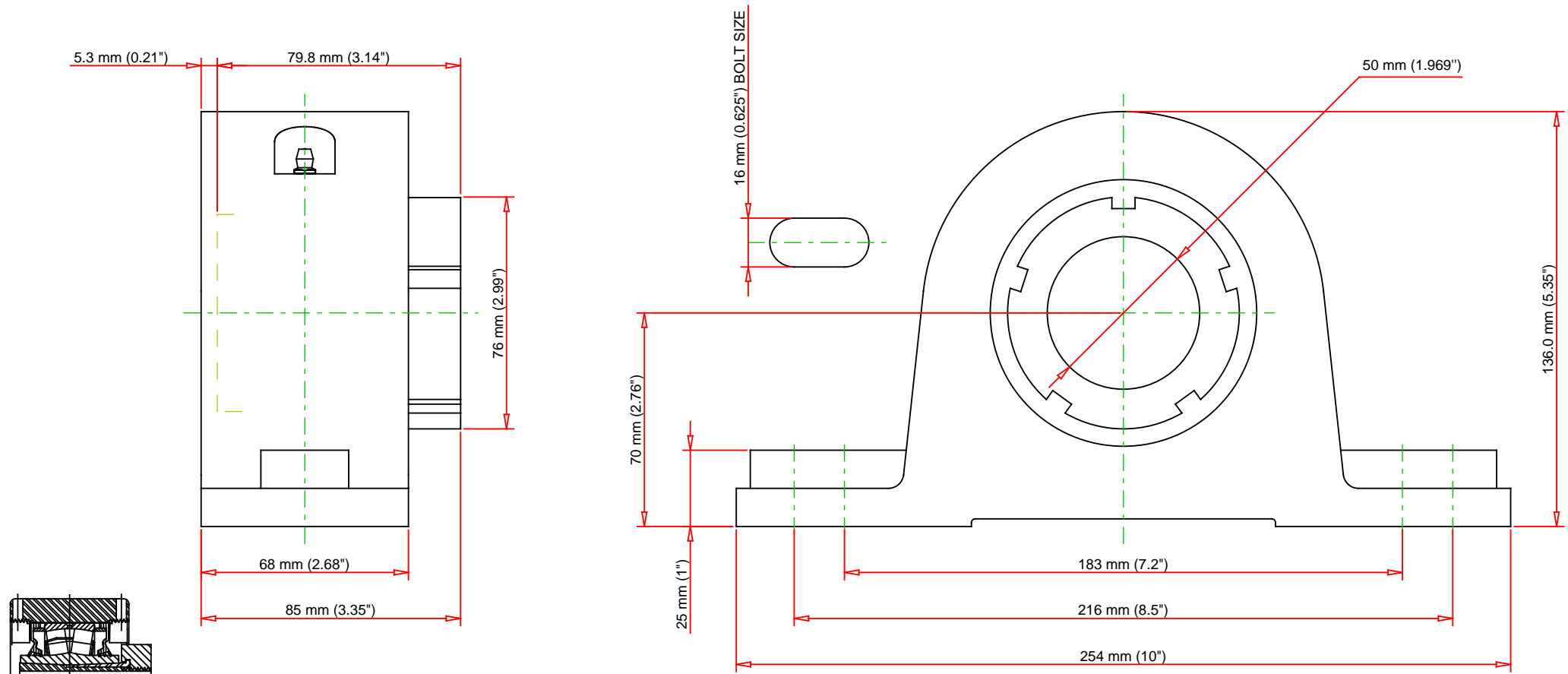
## Engineering Internal Radial Clearance

<b>Eng Internal Radial Clearance - Min</b>	0.0030
--	--------

<b>Eng Internal Radial Clearance - Max</b>	0.0037
--	--------

<b>Pre Install Clearance Min</b>	0.0030 in 0.075 mm
----------------------------------	-----------------------

<b>Pre Install Clearance Max</b>	0.0037 in 0.094 mm
----------------------------------	-----------------------



Note: Section View not to Scale

C - Dynamic Load	31400	lb	140	kN
C0 - Static Load	31900	lb	142	kN
Weight	18	lb	8.4	kg
Max. Speed T-Seals & Grease	3200	rpm		
Rad. Clearance - Max.	0.0037			



THE TIMKEN COMPANY  
NORTH CANTON, OHIO USA

**QVSN11V050S**  
Single V-Lock Two-Bolt Pillow Block

Every reasonable effort has been made to ensure the accuracy of the information contained in this writing, but no liability is accepted for errors, omissions or for any other reason.

**FOR DISCUSSION ONLY**