

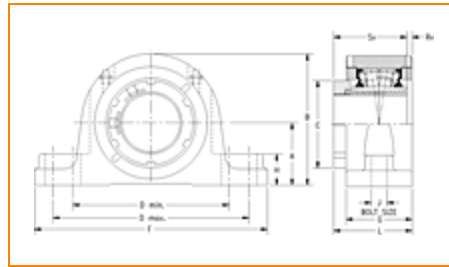
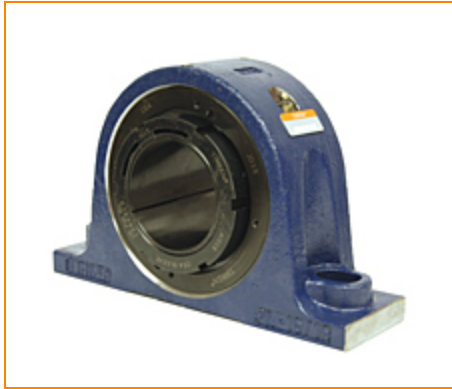
**TIMKEN****The Timken Company**

4500 Mt Pleasant St. NW

N. Canton, OH 44720

**Phone:** (234) 262-3000**E-Mail:** [CustomerCAD@timken.com](mailto:CustomerCAD@timken.com) • **Web site:** [www.timken.com](http://www.timken.com)

Timken Part Number QVSN12V055S, Single V-Lock Two-Bolt Pillow Block



[Specifications](#) | [Dimensions](#) | [Radial and Thrust Factors](#) | [Engineering Seal Speed](#) | [Engineering Bearing Attributes](#) | [Engineering Internal Radial Clearance](#)

## Specifications

<b>Engineering Group</b>	Mounted Bearing
<b>Bearing Number</b>	22212
<b>Shaft Size</b>	55 mm
<b>Shaft Size Type</b>	Metric
<b>Full Timken Part Number</b>	QVSN12V055SB QVSN12V055SC QVSN12V055SEB QVSN12V055SEC QVSN12V055SEM QVSN12V055SEN QVSN12V055SEO QVSN12V055SET QVSN12V055SM QVSN12V055SN QVSN12V055SO QVSN12V055ST

<b>Locking Style</b>	Single V-Lock
<b>Weight</b>	29 lb 13.20 Kg
<b>Housing Construction</b>	Two-Bolt Pillow Block
<b>UPC Code</b>	0883450097710 0883450098342 0883450107648 0883450107846 0883450114516 0883450114707 0883450129190 0883450129862 0883450138147 0883450138277 0883450357821 0883450357951

## Dimensions

<b>Dimension A</b>	2.76 in 70.0 mm
<b>Dimension B</b>	5.55 in 141.0 mm
<b>Dimension C</b>	3.15 in 80.0 mm
<b>Dimension D Max</b>	8.50 in 216.0 mm
<b>Dimension D Min</b>	7.20 in 183.0 mm
<b>Dimension F</b>	10.00 in 254.0 mm
<b>Dimension G</b>	2.680 in 68.00 mm
<b>Dimension H</b>	1.00 in 25.0 mm

<b>Dimension J (Bolt Size)</b>	0.625 in 16 mm
<b>Dimension L</b>	3.35 in 85.0 mm
<b>Dimension RV</b>	0.21 in 5.3 mm
<b>Dimension SV</b>	3.14 in 79.8 mm

### Radial and Thrust Factors

<b>C0 - Static Load</b>	39000 lb 174 kN
<b>C - Dynamic Load (Basic)</b>	38100 lb 169 kN
<b>e - Geometry Factor</b>	0.24
<b>Y1 - Geometry Factor</b>	2.84
<b>Y2 - Geometry Factor</b>	4.23

### Engineering Seal Speed

<b>Oil Lubrication - M/N Seal</b>	2000 rpm
<b>Oil Lubrication - T Seal</b>	3500 rpm
<b>Oil Lubrication - B/C/O Seal</b>	1650 rpm
<b>Grease Lubrication - M/N Seal</b>	2000 rpm
<b>Grease Lubrication - T Seal</b>	3000 rpm
<b>Grease Lubrication - B/C/O Seal</b>	1550 rpm

### Engineering Bearing Attributes

<b>Float</b>	0.050 in 1.270 mm
--------------	----------------------

<b>Shaft Tolerance</b>	0.0015 in 0.038 mm
------------------------	-----------------------

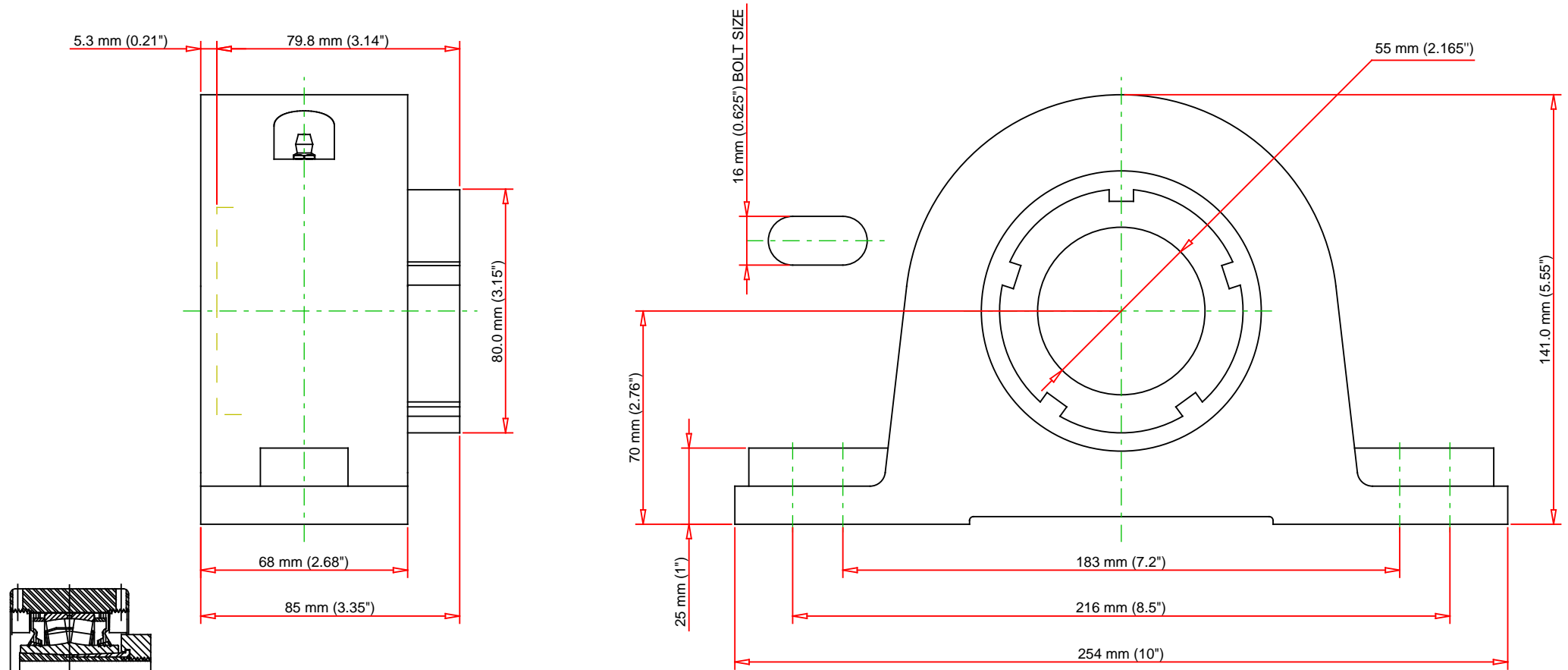
## Engineering Internal Radial Clearance

<b>Eng Internal Radial Clearance - Min</b>	0.0030
--	--------

<b>Eng Internal Radial Clearance - Max</b>	0.0037
--	--------

<b>Pre Install Clearance Min</b>	0.0030 in 0.075 mm
----------------------------------	-----------------------

<b>Pre Install Clearance Max</b>	0.0037 in 0.094 mm
----------------------------------	-----------------------



Note: Section View not to Scale

C - Dynamic Load	38100	lb	169	kN
C0 - Static Load	39000	lb	174	kN
Weight	29	lb	13.2	kg
Max. Speed T-Seals & Grease	3000	rpm		
Rad. Clearance - Max.	0.0037			



THE TIMKEN COMPANY  
NORTH CANTON, OHIO USA

**QVSN12V055S**  
Single V-Lock Two-Bolt Pillow Block

Every reasonable effort has been made to ensure the accuracy of the information contained in this writing, but no liability is accepted for errors, omissions or for any other reason.

**FOR DISCUSSION ONLY**