

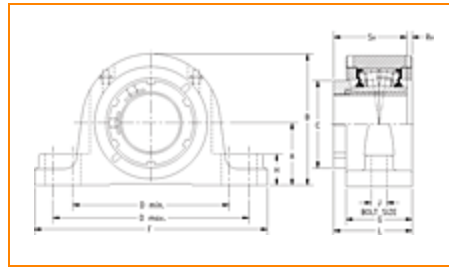
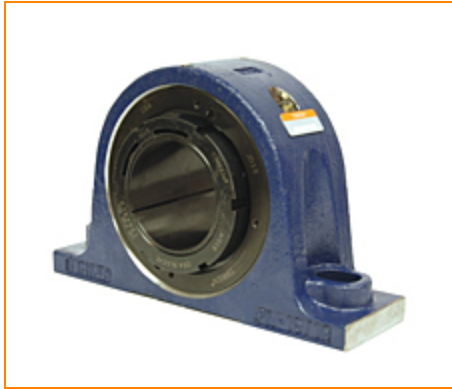
TIMKEN**The Timken Company**

4500 Mt Pleasant St. NW

N. Canton, OH 44720

Phone: (234) 262-3000**E-Mail:** CustomerCAD@timken.com • **Web site:** www.timken.com

Timken Part Number QVSN19V080S, Single V-Lock Two-Bolt Pillow Block



[Specifications](#) | [Dimensions](#) | [Radial and Thrust Factors](#) | [Engineering Seal Speed](#) | [Engineering Bearing Attributes](#) | [Engineering Internal Radial Clearance](#)

Specifications

Engineering Group Mounted Bearing

Bearing Number 22219

Shaft Size 80 mm

Shaft Size Type Metric

Full Timken Part Number

- QVSN19V080SB
- QVSN19V080SC
- QVSN19V080SEB
- QVSN19V080SEC
- QVSN19V080SEM
- QVSN19V080SEN
- QVSN19V080SEO
- QVSN19V080SET
- QVSN19V080SM
- QVSN19V080SN
- QVSN19V080SO
- QVSN19V080ST

Locking Style	Single V-Lock
Weight	56 lb 25.40 Kg
Housing Construction	Two-Bolt Pillow Block
UPC Code	0883450148566 0883450148573 0883450148603 0883450148610 0883450177481 0883450177924 0883450205092 0883450205474 0883450217514 0883450217897 0883450229937 0883450230315

Dimensions

Dimension A	3.94 in 100.0 mm
Dimension B	7.87 in 200.00 mm
Dimension C	4.88 in 124.0 mm
Dimension D Max	11.50 in 292.0 mm
Dimension D Min	11.02 in 280.0 mm
Dimension F	13.58 in 345.00 mm
Dimension G	3.390 in 86.00 mm
Dimension H	1.53 in 39.0 mm

Dimension J (Bolt Size)	0.750 in 20 mm
Dimension L	4.02 in 102.0 mm
Dimension RV	0.73 in 18.5 mm
Dimension SV	3.29 in 83.6 mm

Radial and Thrust Factors

C0 - Static Load	99000 lb 441 kN
C - Dynamic Load (Basic)	86600 lb 385 kN
e - Geometry Factor	0.23
Y1 - Geometry Factor	2.88
Y2 - Geometry Factor	4.29

Engineering Seal Speed

Oil Lubrication - M/N Seal	1300 rpm
Oil Lubrication - T Seal	2200 rpm
Oil Lubrication - B/C/O Seal	1000 rpm
Grease Lubrication - M/N Seal	1300 rpm
Grease Lubrication - T Seal	1800 rpm
Grease Lubrication - B/C/O Seal	950 rpm

Engineering Bearing Attributes

Float	0.083 in 2.108 mm
--------------	----------------------

Shaft Tolerance	0.0030 in 0.076 mm
------------------------	-----------------------

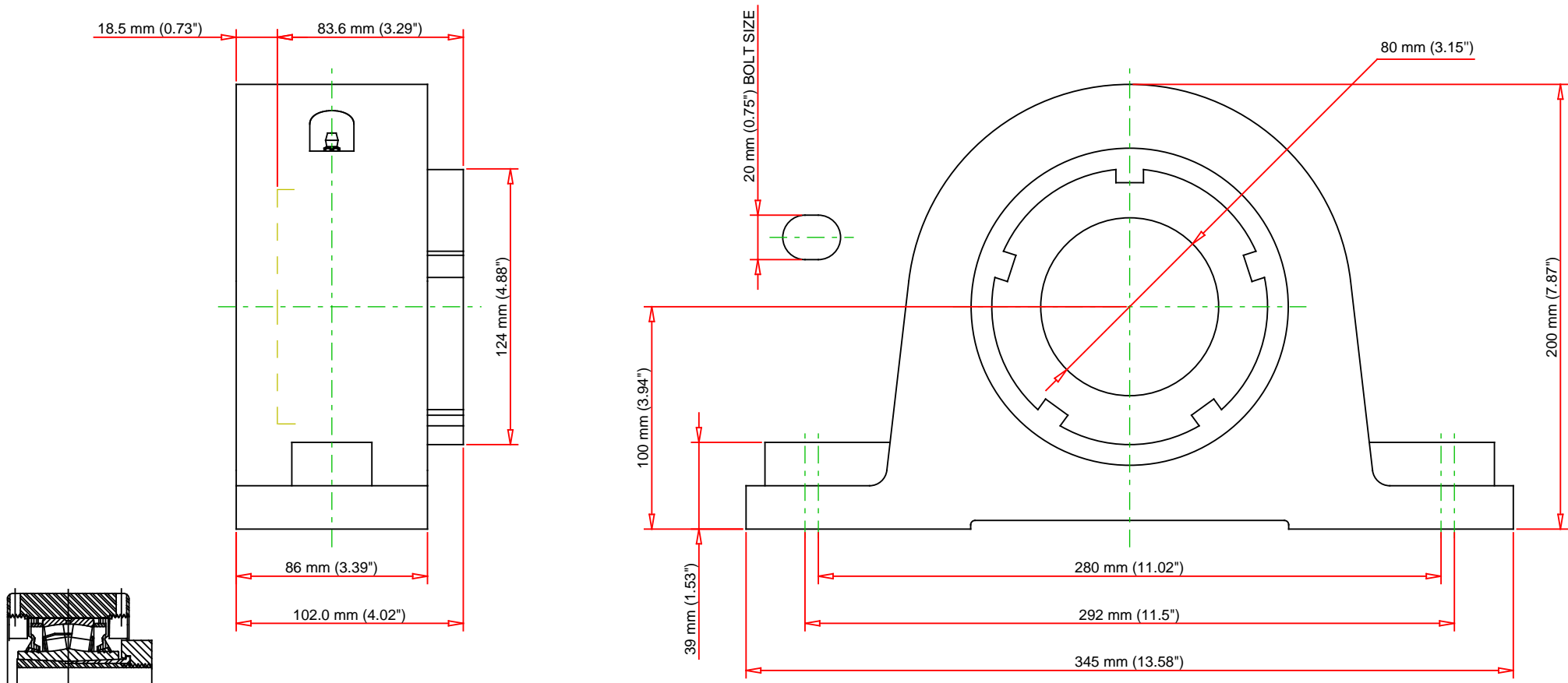
Engineering Internal Radial Clearance

Eng Internal Radial Clearance - Min	0.0043
--	--------

Eng Internal Radial Clearance - Max	0.0055
--	--------

Pre Install Clearance Min	0.0043 in 0.110 mm
----------------------------------	-----------------------

Pre Install Clearance Max	0.0055 in 0.140 mm
----------------------------------	-----------------------



Note: Section View not to Scale

C - Dynamic Load	86600	lb	385	kN
C0 - Static Load	99000	lb	441	kN
Weight	56	lb	25.4	kg
Max. Speed T-Seals & Grease	1800	rpm		
Rad. Clearance - Max.	0.0055			

TIMKEN
 THE TIMKEN COMPANY
 NORTH CANTON, OHIO USA

QVSN19V080S
 Single V-Lock Two-Bolt Pillow Block

Every reasonable effort has been made to ensure the accuracy of the information contained in this writing, but no liability is accepted for errors, omissions or for any other reason.

FOR DISCUSSION ONLY