

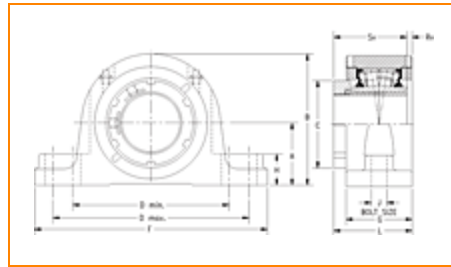
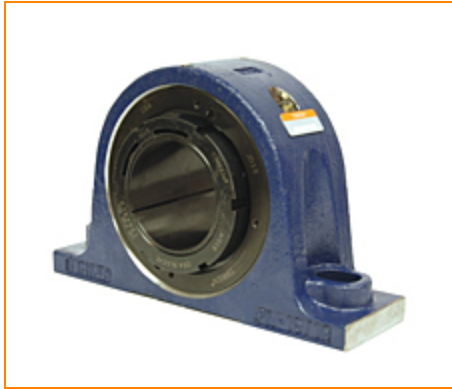
**TIMKEN****The Timken Company**

4500 Mt Pleasant St. NW

N. Canton, OH 44720

**Phone:** (234) 262-3000**E-Mail:** [CustomerCAD@timken.com](mailto:CustomerCAD@timken.com) • **Web site:** [www.timken.com](http://www.timken.com)

Timken Part Number QVSN19V090S, Single V-Lock Two-Bolt Pillow Block



[Specifications](#) | [Dimensions](#) | [Radial and Thrust Factors](#) | [Engineering Seal Speed](#) | [Engineering Bearing Attributes](#) | [Engineering Internal Radial Clearance](#)

## Specifications

**Engineering Group** Mounted Bearing

**Bearing Number** 22219

**Shaft Size** 90 mm

**Shaft Size Type** Metric

**Full Timken Part Number**

- QVSN19V090SB
- QVSN19V090SC
- QVSN19V090SEB
- QVSN19V090SEC
- QVSN19V090SEM
- QVSN19V090SEN
- QVSN19V090SEO
- QVSN19V090SET
- QVSN19V090SM
- QVSN19V090SN
- QVSN19V090SO
- QVSN19V090ST

<b>Locking Style</b>	Single V-Lock
<b>Weight</b>	56 lb 25.40 Kg
<b>Housing Construction</b>	Two-Bolt Pillow Block
<b>UPC Code</b>	0883450148962 0883450148979 0883450149006 0883450149013 0883450177511 0883450177955 0883450205122 0883450205504 0883450217545 0883450217927 0883450229968 0883450230346

## Dimensions

<b>Dimension A</b>	4.41 in 112.0 mm
<b>Dimension B</b>	8.34 in 212 mm
<b>Dimension C</b>	4.88 in 124.0 mm
<b>Dimension D Max</b>	12.87 in 327.0 mm
<b>Dimension D Min</b>	11.42 in 290.0 mm
<b>Dimension F</b>	14.96 in 380.00 mm
<b>Dimension G</b>	3.390 in 86.00 mm
<b>Dimension H</b>	1.53 in 39.0 mm

<b>Dimension J (Bolt Size)</b>	0.875 in 24 mm
<b>Dimension L</b>	4.02 in 102.0 mm
<b>Dimension RV</b>	0.33 in 8.4 mm
<b>Dimension SV</b>	3.69 in 93.7 mm

### Radial and Thrust Factors

<b>C0 - Static Load</b>	99000 lb 441 kN
<b>C - Dynamic Load (Basic)</b>	86600 lb 385 kN
<b>e - Geometry Factor</b>	0.23
<b>Y1 - Geometry Factor</b>	2.88
<b>Y2 - Geometry Factor</b>	4.29

### Engineering Seal Speed

<b>Oil Lubrication - M/N Seal</b>	1300 rpm
<b>Oil Lubrication - T Seal</b>	2200 rpm
<b>Oil Lubrication - B/C/O Seal</b>	1000 rpm
<b>Grease Lubrication - M/N Seal</b>	1300 rpm
<b>Grease Lubrication - T Seal</b>	1800 rpm
<b>Grease Lubrication - B/C/O Seal</b>	950 rpm

### Engineering Bearing Attributes

<b>Float</b>	0.083 in 2.108 mm
--------------	----------------------

<b>Shaft Tolerance</b>	0.0030 in 0.076 mm
------------------------	-----------------------

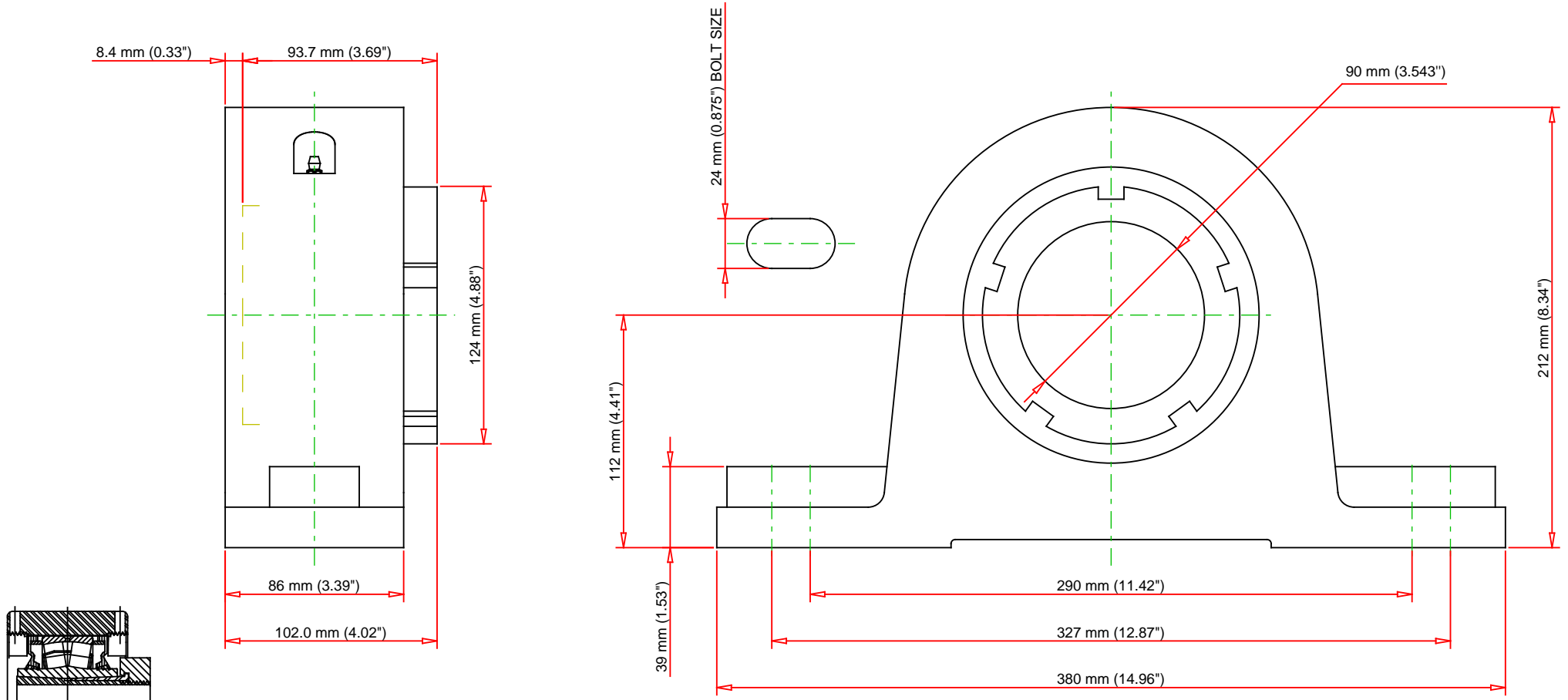
## Engineering Internal Radial Clearance

<b>Eng Internal Radial Clearance - Min</b>	0.0043
--	--------

<b>Eng Internal Radial Clearance - Max</b>	0.0055
--	--------

<b>Pre Install Clearance Min</b>	0.0043 in 0.110 mm
----------------------------------	-----------------------

<b>Pre Install Clearance Max</b>	0.0055 in 0.140 mm
----------------------------------	-----------------------



Note: Section View not to Scale

C - Dynamic Load	86600	lb	385	kN
C0 - Static Load	99000	lb	441	kN
Weight	56	lb	25.4	kg
Max. Speed T-Seals & Grease	1800	rpm		
Rad. Clearance - Max.	0.0055			

**TIMKEN**  
 THE TIMKEN COMPANY  
 NORTH CANTON, OHIO USA

**QVSN19V090S**  
 Single V-Lock Two-Bolt Pillow Block

Every reasonable effort has been made to ensure the accuracy of the information contained in this writing, but no liability is accepted for errors, omissions or for any other reason.

**FOR DISCUSSION ONLY**