



The Timken Company

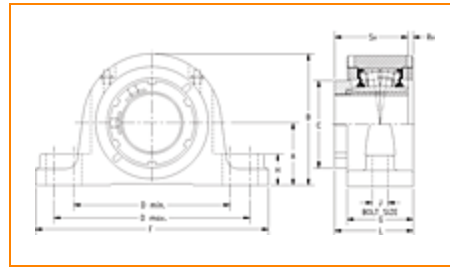
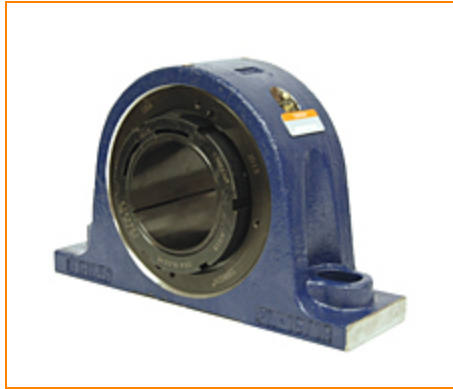
4500 Mt Pleasant St. NW

N. Canton, OH 44720

Phone: (234) 262-3000

E-Mail: CustomerCAD@timken.com • Web site: www.timken.com

Timken Part Number QVSN22V100S, Single V-Lock Two-Bolt Pillow Block



[Specifications](#) | [Dimensions](#) | [Radial and Thrust Factors](#) | [Engineering Seal Speed](#) | [Engineering Bearing Attributes](#) | [Engineering Internal Radial Clearance](#)

Specifications

Engineering Group Mounted Bearing

Bearing Number 22222

Shaft Size 100 mm

Shaft Size Type Metric

Full Timken Part Number

- QVSN22V100SB
- QVSN22V100SC
- QVSN22V100SEB
- QVSN22V100SEC
- QVSN22V100SEM
- QVSN22V100SEN
- QVSN22V100SEO
- QVSN22V100SET
- QVSN22V100SM
- QVSN22V100SN
- QVSN22V100SO
- QVSN22V100ST

Locking Style	Single V-Lock
Weight	79 lb 35.80 Kg
Housing Construction	Two-Bolt Pillow Block
UPC Code	0883450060813 0883450149945 0883450149983 0883450177542 0883450177986 0883450178044 0883450205153 0883450205535 0883450217576 0883450217958 0883450229999 0883450230377

Dimensions

Dimension A	4.92 in 125.0 mm
Dimension B	9.41 in 241.0 mm
Dimension C	5.51 in 140.0 mm
Dimension D Max	14.41 in 366.0 mm
Dimension D Min	12.56 in 319.0 mm
Dimension F	16.14 in 410.00 mm
Dimension G	3.980 in 101.00 mm
Dimension H	2.00 in 50.0 mm

Dimension J (Bolt Size)	0.875 in 24 mm
Dimension L	4.57 in 116.0 mm
Dimension RV	0.44 in 11.2 mm
Dimension SV	4.13 in 104.9 mm

Radial and Thrust Factors

C0 - Static Load	147000 lb 653 kN
C - Dynamic Load (Basic)	125000 lb 555 kN
e - Geometry Factor	0.25
Y1 - Geometry Factor	2.73
Y2 - Geometry Factor	4.06

Engineering Seal Speed

Oil Lubrication - M/N Seal	900 rpm
Oil Lubrication - T Seal	1700 rpm
Oil Lubrication - B/C/O Seal	600 rpm
Grease Lubrication - M/N Seal	900 rpm
Grease Lubrication - T Seal	1200 rpm
Grease Lubrication - B/C/O Seal	600 rpm

Engineering Bearing Attributes

Float	0.083 in 2.108 mm
--------------	----------------------

Shaft Tolerance	0.0030 in 0.076 mm
------------------------	-----------------------

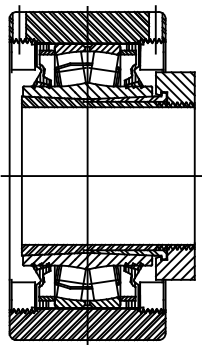
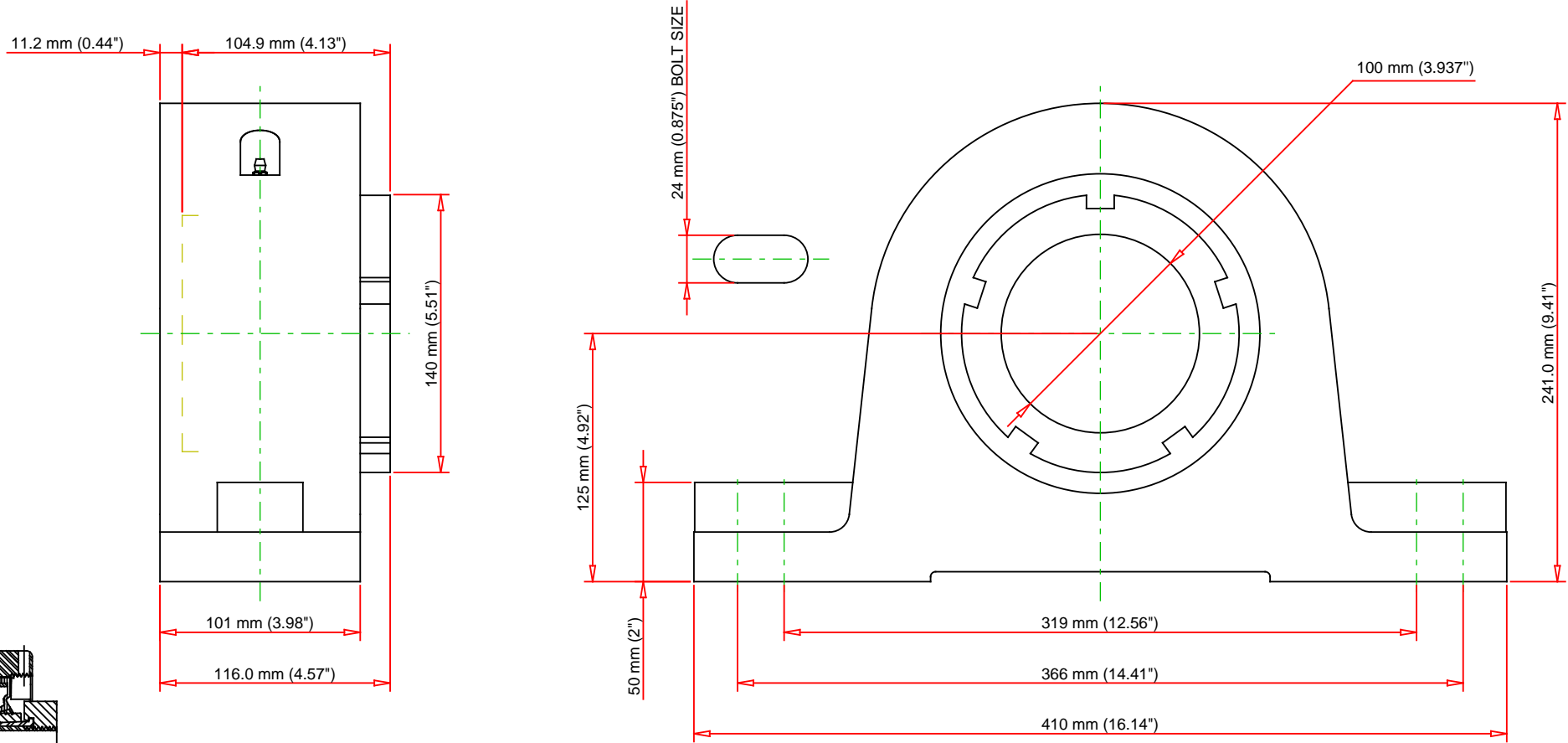
Engineering Internal Radial Clearance

Eng Internal Radial Clearance - Min	0.0053
--	--------

Eng Internal Radial Clearance - Max	0.0067
--	--------

Pre Install Clearance Min	0.0053 in 0.135 mm
----------------------------------	-----------------------

Pre Install Clearance Max	0.0067 in 0.170 mm
----------------------------------	-----------------------



Note: Section View not to Scale

C - Dynamic Load	125000	lb	555	kN
C0 - Static Load	147000	lb	653	kN
Weight	79	lb	35.8	kg
Max. Speed T-Seals & Grease	1200	rpm		
Rad. Clearance - Max.	0.0067			

TIMKEN
 THE TIMKEN COMPANY
 NORTH CANTON, OHIO USA

QVSN22V100S
 Single V-Lock Two-Bolt Pillow Block

Every reasonable effort has been made to ensure the accuracy of the information contained in this writing, but no liability is accepted for errors, omissions or for any other reason.

FOR DISCUSSION ONLY