



The Timken Company

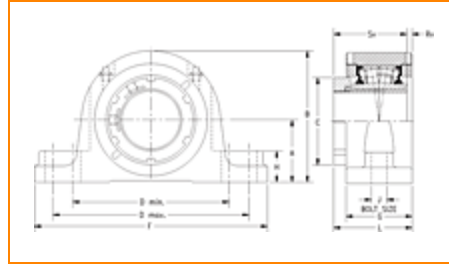
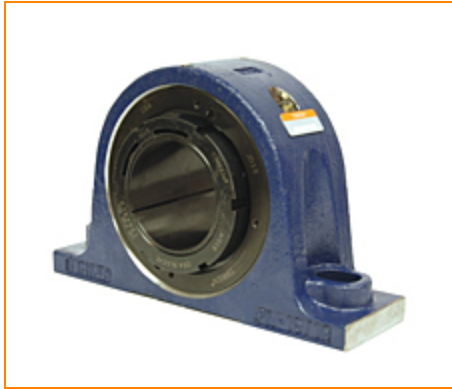
4500 Mt Pleasant St. NW

N. Canton, OH 44720

Phone: (234) 262-3000

E-Mail: CustomerCAD@timken.com • Web site: www.timken.com

Timken Part Number QVSN28V125S, Single V-Lock Two-Bolt Pillow Block



[Specifications](#) | [Dimensions](#) | [Radial and Thrust Factors](#) | [Engineering Seal Speed](#) | [Engineering Bearing Attributes](#) | [Engineering Internal Radial Clearance](#)

Specifications

Engineering Group Mounted Bearing

Bearing Number 22228

Shaft Size 125 mm

Shaft Size Type Metric

Full Timken Part Number

- QVSN28V125SB
- QVSN28V125SC
- QVSN28V125SEB
- QVSN28V125SEC
- QVSN28V125SEM
- QVSN28V125SEN
- QVSN28V125SEO
- QVSN28V125SET
- QVSN28V125SM
- QVSN28V125SN
- QVSN28V125SO
- QVSN28V125ST

Locking Style	Single V-Lock
Weight	88 lb 39.9 Kg
Housing Construction	Two-Bolt Pillow Block
UPC Code	0883450098014 0883450098649 0883450107730 0883450107921 0883450114608 0883450114806 0883450129497 0883450130165 0883450138208 0883450138338 0883450357883 0883450358019

Dimensions

Dimension A	5.91 in 150.0 mm
Dimension B	11.41 in 290.00 mm
Dimension C	7.48 in 190.0 mm
Dimension D Max	17.13 in 435.0 mm
Dimension D Min	15.83 in 402.0 mm
Dimension F	19.68 in 500 mm
Dimension G	4.610 in 117.00 mm
Dimension H	1.92 in 49.0 mm

Dimension J (Bolt Size)	1.250 in 30 mm
Dimension L	5.83 in 148 mm
Dimension RV	0.01 in .25 mm
Dimension SV	5.82 in 147.8 mm

Radial and Thrust Factors

C0 - Static Load	237000 lb 1060 kN
C - Dynamic Load (Basic)	194000 lb 863 kN
e - Geometry Factor	0.25
Y1 - Geometry Factor	2.67
Y2 - Geometry Factor	3.98

Engineering Seal Speed

Oil Lubrication - M/N Seal	650 rpm
Oil Lubrication - T Seal	1200 rpm
Oil Lubrication - B/C/O Seal	350 rpm
Grease Lubrication - M/N Seal	650 rpm
Grease Lubrication - T Seal	900 rpm
Grease Lubrication - B/C/O Seal	350 rpm

Engineering Bearing Attributes

Float	0.083 in 2.108 mm
--------------	----------------------

Shaft Tolerance	0.0050 in 0.127 mm
------------------------	-----------------------

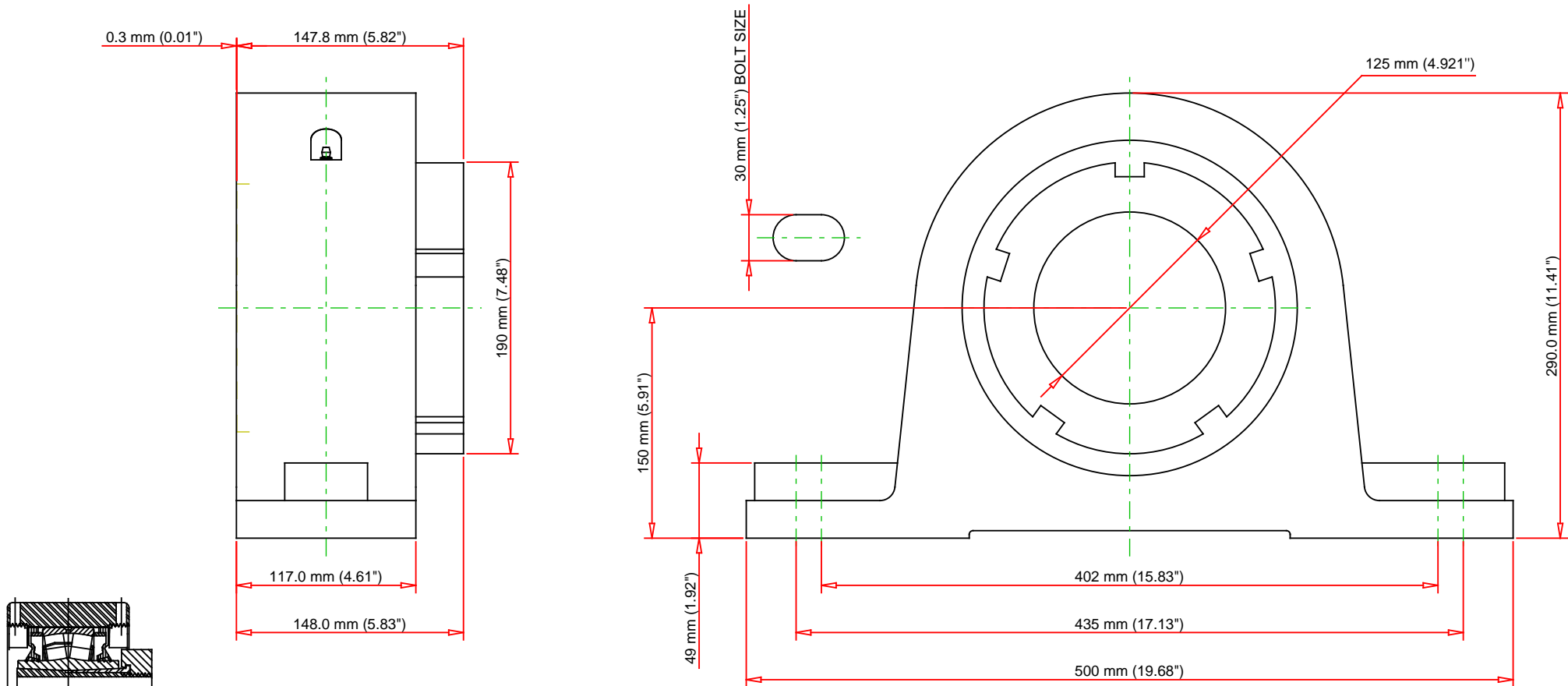
Engineering Internal Radial Clearance

Eng Internal Radial Clearance - Min	0.0063
--	--------

Eng Internal Radial Clearance - Max	0.0079
--	--------

Pre Install Clearance Min	0.0063 in 0.160 mm
----------------------------------	-----------------------

Pre Install Clearance Max	0.0079 in 0.201 mm
----------------------------------	-----------------------



Note: Section View not to Scale

C - Dynamic Load	194000	lb	863	kN
C0 - Static Load	237000	lb	1060	kN
Weight	88	lb	39.9	kg
Max. Speed T-Seals & Grease	900	rpm		
Rad. Clearance - Max.	0.0079			

TIMKEN
 THE TIMKEN COMPANY
 NORTH CANTON, OHIO USA

QVSN28V125S
 Single V-Lock Two-Bolt Pillow Block

Every reasonable effort has been made to ensure the accuracy of the information contained in this writing, but no liability is accepted for errors, omissions or for any other reason.

FOR DISCUSSION ONLY