

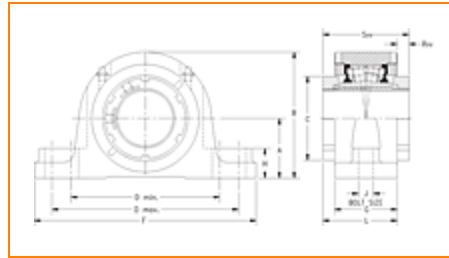
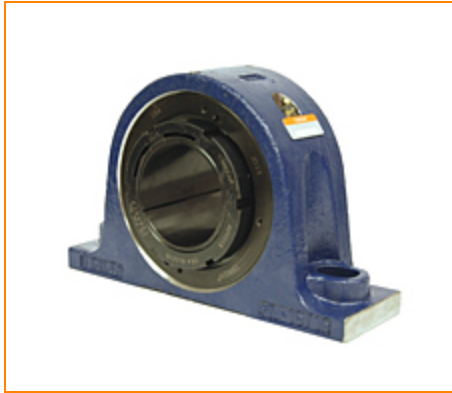
TIMKEN**The Timken Company**

4500 Mt Pleasant St. NW

N. Canton, OH 44720

Phone: (234) 262-3000**E-Mail:** CustomerCAD@timken.com • **Web site:** www.timken.com

Timken Part Number QVVSN11V050S, Double V-Lock Two-Bolt Pillow Block



[Specifications](#) | [Dimensions](#) | [Radial and Thrust Factors](#) | [Engineering Seal Speed](#) | [Engineering Bearing Attributes](#) | [Engineering Internal Radial Clearance](#)

Specifications

Engineering Group	Mounted Bearing
--------------------------	-----------------

Bearing Number	22211
-----------------------	-------

Shaft Size	50 mm
-------------------	-------

Shaft Size Type	Metric
------------------------	--------

Full Timken Part Number	QVVSN11V050SB QVVSN11V050SC QVVSN11V050SEB QVVSN11V050SEC QVVSN11V050SEM QVVSN11V050SEN QVVSN11V050SEO QVVSN11V050SET QVVSN11V050SM QVVSN11V050SN QVVSN11V050SO QVVSN11V050ST
--------------------------------	--

Locking Style	Double V-Lock
Weight	29 lb 13.20 Kg
Housing Construction	Two-Bolt Pillow Block
UPC Code	0883450087612 0883450098847 0883450099516 0883450107983 0883450108188 0883450114851 0883450114981 0883450130363 0883450130493 0883450138376 0883450138727 0883450358057

Dimensions

Dimension A	2.76 in 70.0 mm
Dimension B	5.35 in 136.0 mm
Dimension C	2.99 in 76.0 mm
Dimension D Max	8.50 in 216.0 mm
Dimension D Min	7.20 in 183.0 mm
Dimension F	10.00 in 254.0 mm
Dimension G	2.680 in 68.00 mm
Dimension H	1.00 in 25.0 mm

Dimension J (Bolt Size)	0.625 in 16 mm
Dimension L	3.35 in 85.0 mm
Dimension RVV	0.67 in 17.0 mm
Dimension SVV	4.02 in 102.0 mm

Radial and Thrust Factors

C - Dynamic Load (Basic)	31400 lb 140 kN
C0 - Static Load	31900 lb 142 kN
e - Geometry Factor	0.23
Y1 - Geometry Factor	2.95
Y2 - Geometry Factor	4.40

Engineering Seal Speed

Oil Lubrication - M/N Seal	2200 rpm
Oil Lubrication - T Seal	3800 rpm
Oil Lubrication - B/C/O Seal	1800 rpm
Grease Lubrication - M/N Seal	2200 rpm
Grease Lubrication - T Seal	3200 rpm
Grease Lubrication - B/C/O Seal	1600 rpm

Engineering Bearing Attributes

Float	0.050 in 1.270 mm
--------------	----------------------

Shaft Tolerance	0.0015 in 0.038 mm
------------------------	-----------------------

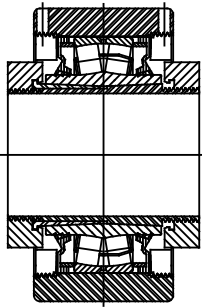
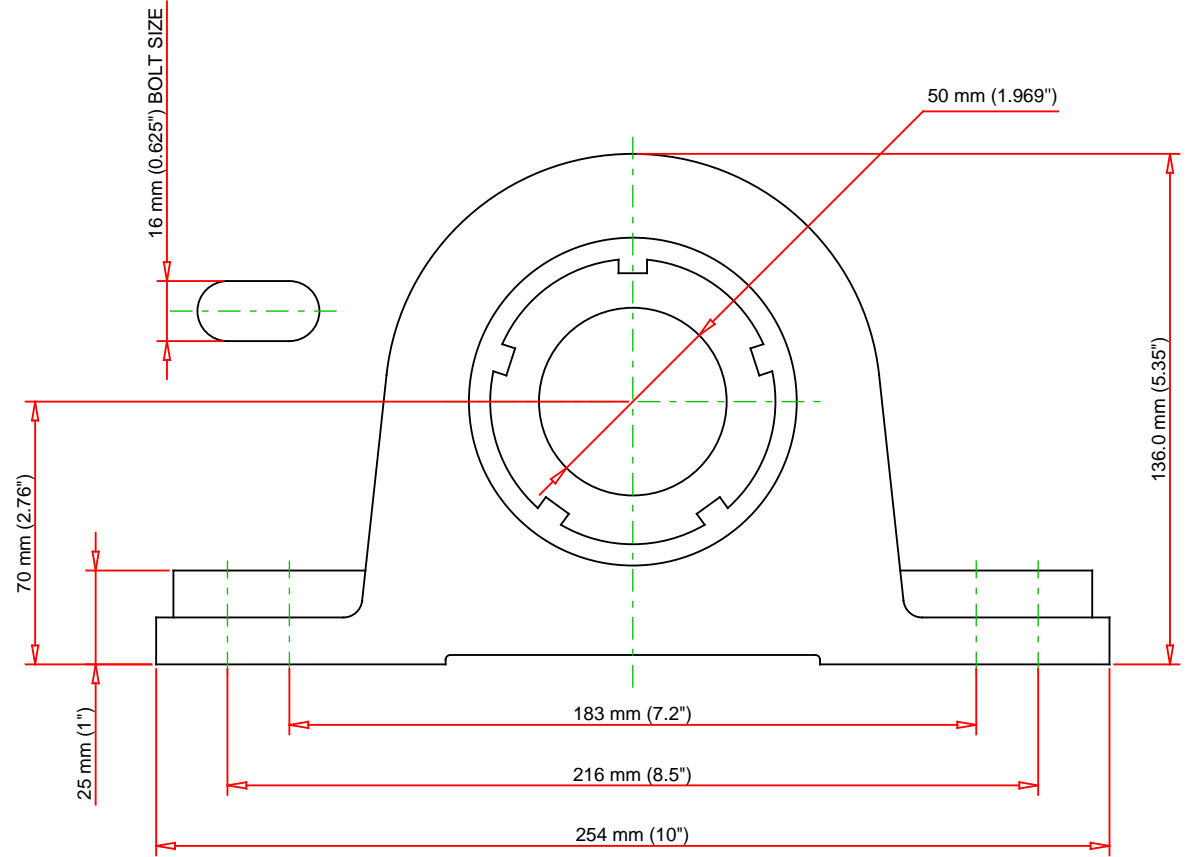
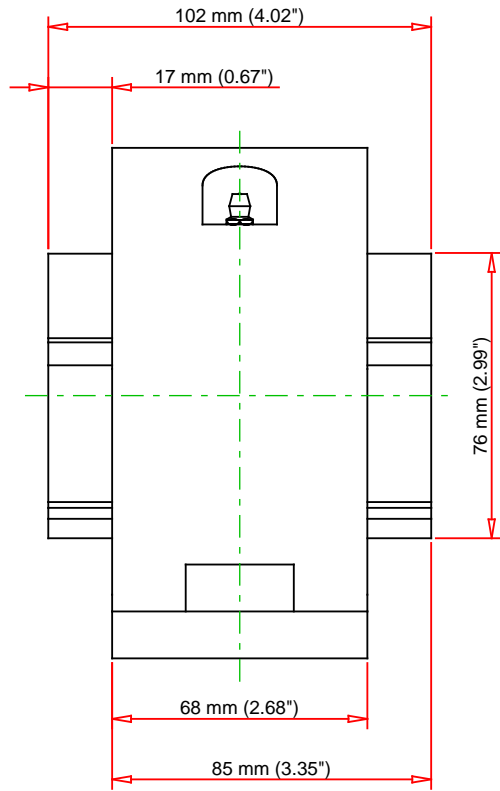
Engineering Internal Radial Clearance

Eng Internal Radial Clearance - Min	0.0030
--	--------

Eng Internal Radial Clearance - Max	0.0037
--	--------

Pre Install Clearance Min	0.0030 in 0.075 mm
----------------------------------	-----------------------

Pre Install Clearance Max	0.0037 in 0.094 mm
----------------------------------	-----------------------



Note: Section View not to Scale

C - Dynamic Load	31400	lb	140	kN
C0 - Static Load	31900	lb	142	kN
Weight	29	lb	13.2	kg
Max. Speed T-Seals & Grease	3200	rpm		
Rad. Clearance - Max.	0.0037			

TIMKEN

THE TIMKEN COMPANY
NORTH CANTON, OHIO USA

QVVSN11V050S
Double V-Lock Two-Bolt Pillow Block

Every reasonable effort has been made to ensure the accuracy of the information contained in this writing, but no liability is accepted for errors, omissions or for any other reason.

FOR DISCUSSION ONLY