



The Timken Company

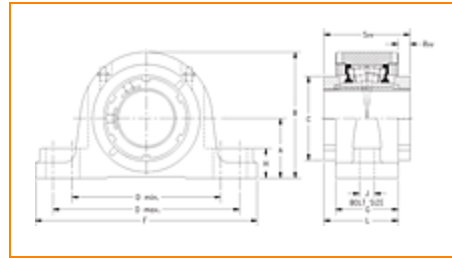
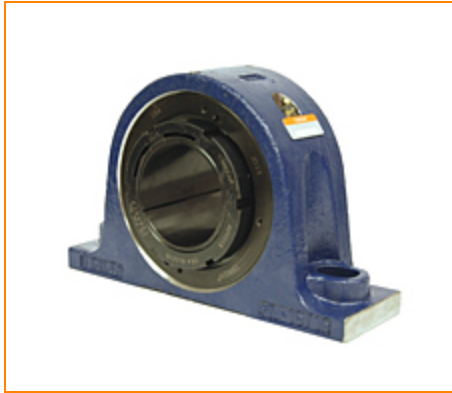
4500 Mt Pleasant St. NW

N. Canton, OH 44720

Phone: (234) 262-3000

E-Mail: CustomerCAD@timken.com • Web site: www.timken.com

Timken Part Number QVVSN12V055S, Double V-Lock Two-Bolt Pillow Block



[Specifications](#) | [Dimensions](#) | [Radial and Thrust Factors](#) | [Engineering Seal Speed](#) | [Engineering Bearing Attributes](#) | [Engineering Internal Radial Clearance](#)

Specifications

Engineering Group Mounted Bearing

Bearing Number 22212

Shaft Size 55 mm

Shaft Size Type Metric

Full Timken Part Number

- QVVSN12V055SB
- QVVSN12V055SC
- QVVSN12V055SEB
- QVVSN12V055SEC
- QVVSN12V055SEM
- QVVSN12V055SEN
- QVVSN12V055SEO
- QVVSN12V055SET
- QVVSN12V055SM
- QVVSN12V055SN
- QVVSN12V055SO
- QVVSN12V055ST

Locking Style	Double V-Lock
Weight	29 lb 13.20 Kg
Housing Construction	Two-Bolt Pillow Block
UPC Code	0883450087742 0883450099011 0883450099622 0883450108034 0883450108225 0883450114882 0883450115018 0883450130394 0883450130523 0883450138468 0883450138772 0883450358088

Dimensions

Dimension A	2.76 in 70.0 mm
Dimension B	5.55 in 141.0 mm
Dimension C	3.15 in 80.0 mm
Dimension D Max	8.50 in 216.0 mm
Dimension D Min	7.20 in 183.0 mm
Dimension F	10.00 in 254.0 mm
Dimension G	2.680 in 68.00 mm
Dimension H	1.00 in 25.0 mm

Dimension J (Bolt Size)	0.625 in 16 mm
Dimension L	3.35 in 85.0 mm
Dimension RVV	0.67 in 17.0 mm
Dimension SVV	4.02 in 102.0 mm

Radial and Thrust Factors

C - Dynamic Load (Basic)	38100 lb 169 kN
C0 - Static Load	39000 lb 174 kN
e - Geometry Factor	0.24
Y1 - Geometry Factor	2.84
Y2 - Geometry Factor	4.23

Engineering Seal Speed

Oil Lubrication - M/N Seal	2000 rpm
Oil Lubrication - T Seal	3500 rpm
Oil Lubrication - B/C/O Seal	1650 rpm
Grease Lubrication - M/N Seal	2000 rpm
Grease Lubrication - T Seal	3000 rpm
Grease Lubrication - B/C/O Seal	1550 rpm

Engineering Bearing Attributes

Float	0.050 in 1.270 mm
--------------	----------------------

Shaft Tolerance	0.0015 in 0.038 mm
------------------------	-----------------------

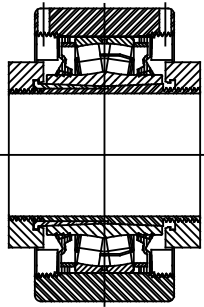
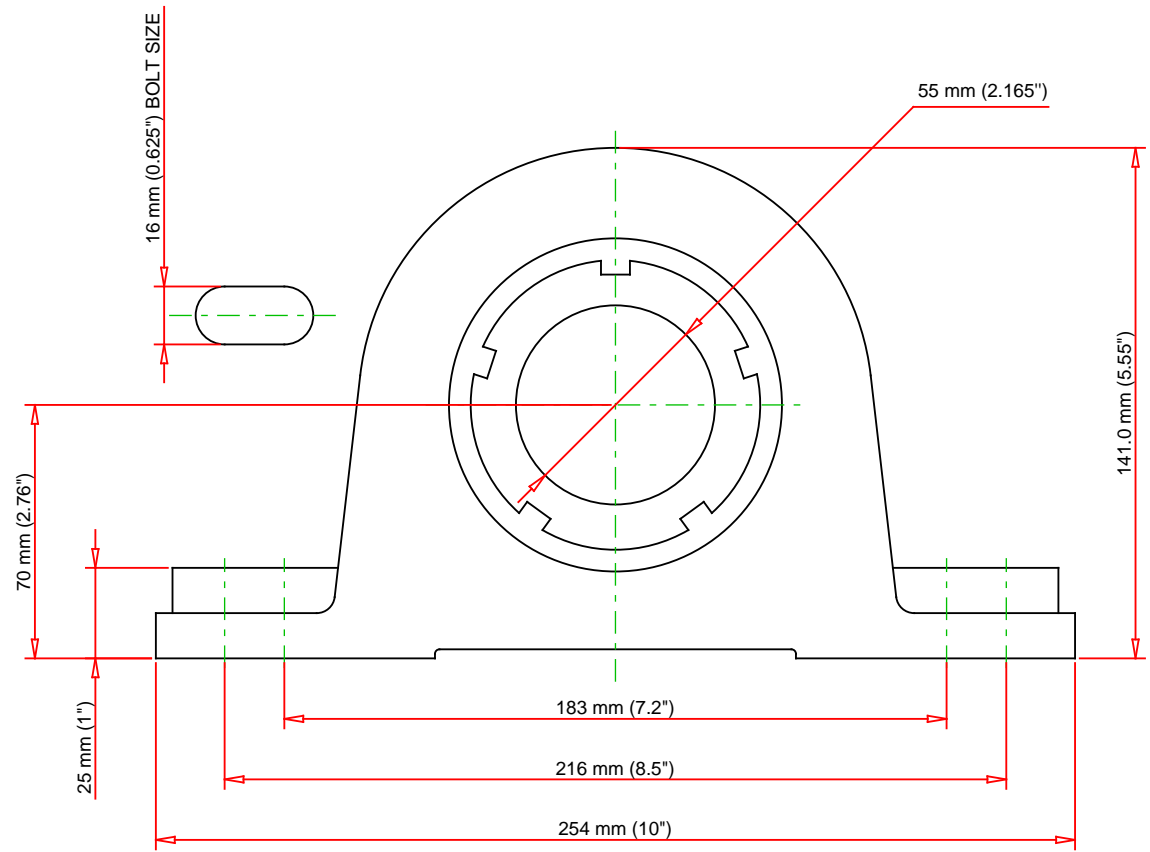
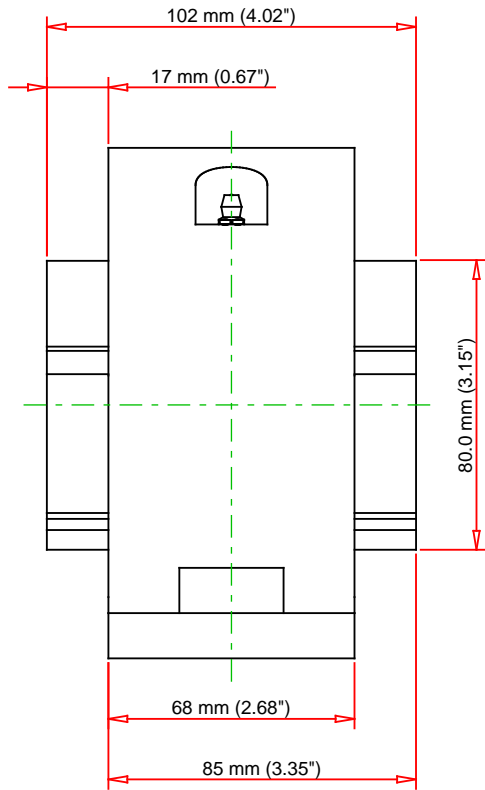
Engineering Internal Radial Clearance

Eng Internal Radial Clearance - Min	0.0030
--	--------

Eng Internal Radial Clearance - Max	0.0037
--	--------

Pre Install Clearance Min	0.0030 in 0.075 mm
----------------------------------	-----------------------

Pre Install Clearance Max	0.0037 in 0.094 mm
----------------------------------	-----------------------



Note: Section View not to Scale

C - Dynamic Load	38100	lb	169	kN
C0 - Static Load	39000	lb	174	kN
Weight	29	lb	13.2	kg
Max. Speed T-Seals & Grease	3000	rpm		
Rad. Clearance - Max.	0.0037			

TIMKEN

THE TIMKEN COMPANY
NORTH CANTON, OHIO USA

QVVSN12V055S

Double V-Lock Two-Bolt Pillow Block

Every reasonable effort has been made to ensure the accuracy of the information contained in this writing, but no liability is accepted for errors, omissions or for any other reason.

FOR DISCUSSION ONLY