



**The Timken Company**

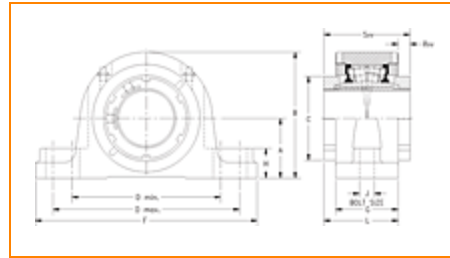
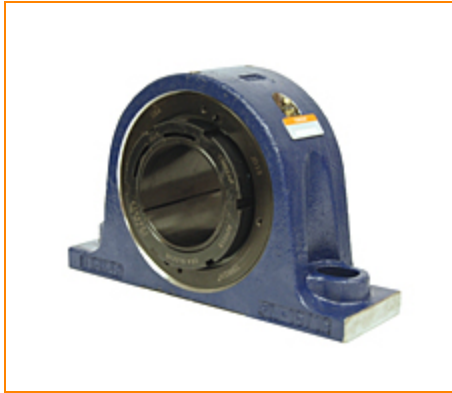
4500 Mt Pleasant St. NW

N. Canton, OH 44720

Phone: (234) 262-3000

E-Mail: [CustomerCAD@timken.com](mailto:CustomerCAD@timken.com) • Web site: [www.timken.com](http://www.timken.com)

Timken Part Number QVVSN14V060S, Double V-Lock Two-Bolt Pillow Block



[Specifications](#) | [Dimensions](#) | [Radial and Thrust Factors](#) | [Engineering Seal Speed](#) | [Engineering Bearing Attributes](#) | [Engineering Internal Radial Clearance](#)

## Specifications

**Engineering Group** Mounted Bearing

**Bearing Number** 22214

**Shaft Size** 60 mm

**Shaft Size Type** Metric

**Full Timken Part Number**

- QVVSN14V060SB
- QVVSN14V060SC
- QVVSN14V060SEB
- QVVSN14V060SEC
- QVVSN14V060SEM
- QVVSN14V060SEN
- QVVSN14V060SEO
- QVVSN14V060SET
- QVVSN14V060SM
- QVVSN14V060SMNP
- QVVSN14V060SN
- QVVSN14V060SO
- QVVSN14V060ST

<b>Locking Style</b>	Double V-Lock
<b>Weight</b>	37.0 lb 16.8 Kg
<b>Housing Construction</b>	Two-Bolt Pillow Block
<b>UPC Code</b>	0883450177573 0883450177764 0883450177771 0883450178051 0883450178242 0883450178259 0883450205160 0883450205542 0883450217583 0883450217965 0883450230001 0883450230384 0883450456500

## Dimensions

<b>Dimension A</b>	3.15 in 80.0 mm
<b>Dimension B</b>	6.18 in 157.00 mm
<b>Dimension C</b>	3.7 in 94 mm
<b>Dimension D Max</b>	9.25 in 235.0 mm
<b>Dimension D Min</b>	7.72 in 196.0 mm
<b>Dimension F</b>	10.83 in 275.00 mm
<b>Dimension G</b>	2.910 in 74.00 mm

<b>Dimension H</b>	1.38 in 35.0 mm
<b>Dimension J (Bolt Size)</b>	0.625 in 16 mm
<b>Dimension L</b>	3.50 in 89.0 mm
<b>Dimension RVV</b>	0.59 in 15.0 mm
<b>Dimension SVV</b>	4.09 in 104.0 mm

### Radial and Thrust Factors

<b>C - Dynamic Load (Basic)</b>	47800 lb 213 kN
<b>C0 - Static Load</b>	52000 lb 231 kN
<b>e - Geometry Factor</b>	0.24
<b>Y1 - Geometry Factor</b>	2.90
<b>Y2 - Geometry Factor</b>	4.32

### Engineering Seal Speed

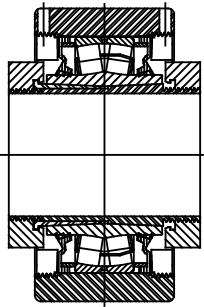
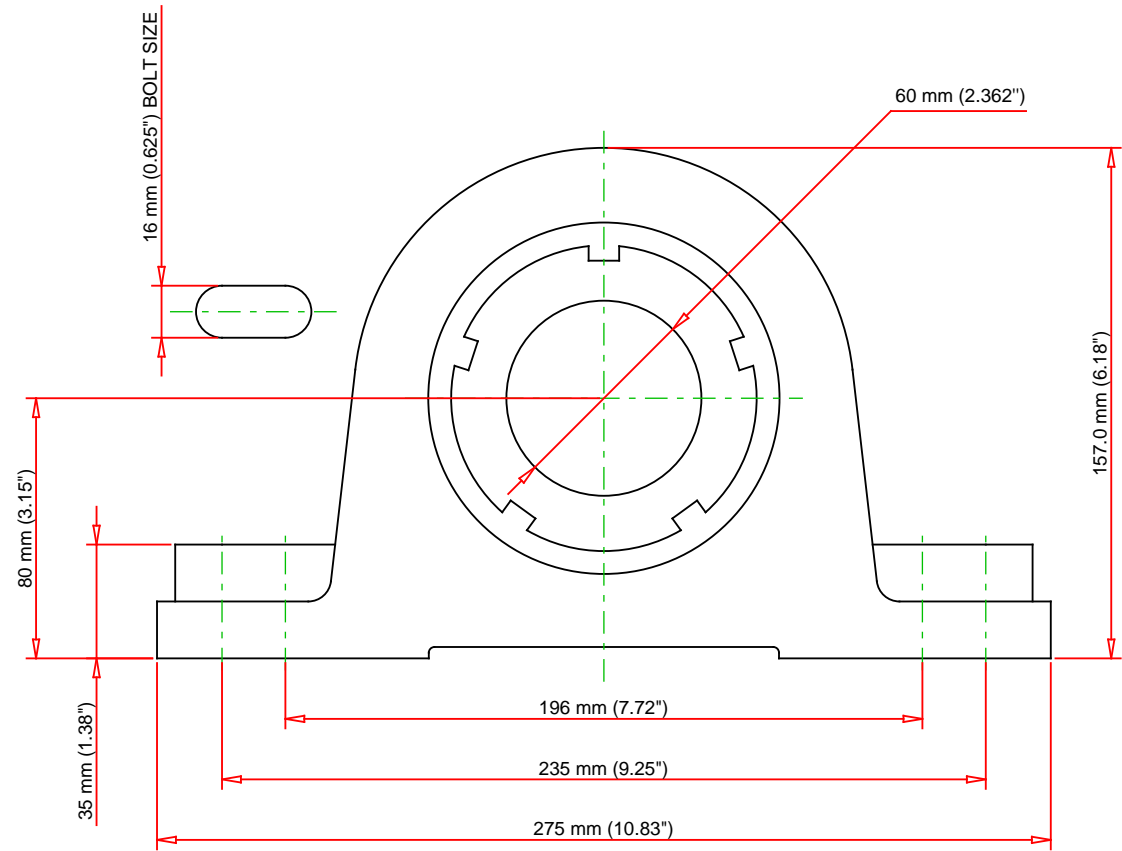
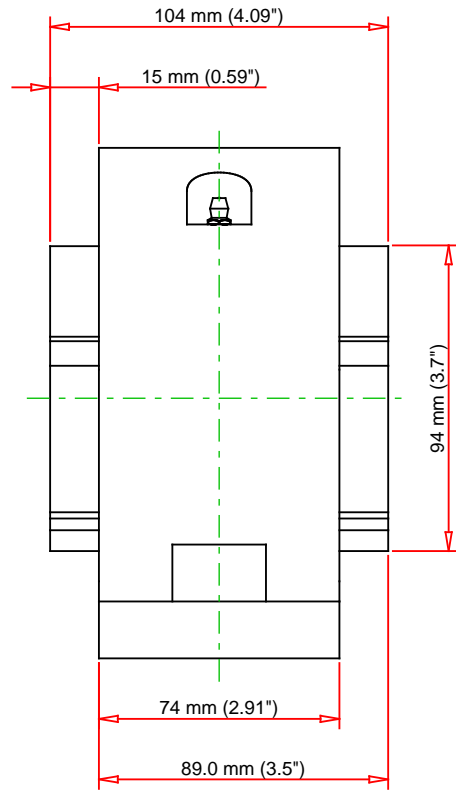
<b>Oil Lubrication - M/N Seal</b>	1700 rpm
<b>Oil Lubrication - T Seal</b>	3050 rpm
<b>Oil Lubrication - B/C/O Seal</b>	1400 rpm
<b>Grease Lubrication - M/N Seal</b>	1700 rpm
<b>Grease Lubrication - T Seal</b>	2600 rpm
<b>Grease Lubrication - B/C/O Seal</b>	1400 rpm

## Engineering Bearing Attributes

<b>Float</b>	0.083 in 2.108 mm
<b>Shaft Tolerance</b>	0.0015 in 0.038 mm

## Engineering Internal Radial Clearance

<b>Eng Internal Radial Clearance - Min</b>	0.0030
<b>Eng Internal Radial Clearance - Max</b>	0.0037
<b>Pre Install Clearance Min</b>	0.0030 in 0.075 mm
<b>Pre Install Clearance Max</b>	0.0037 in 0.094 mm



Note: Section View not to Scale

C - Dynamic Load	47800	lb	213	kN
C0 - Static Load	52000	lb	231	kN
Weight	37	lb	16.8	kg
Max. Speed T-Seals & Grease	2600	rpm		
Rad. Clearance - Max.	0.0037			

**TIMKEN**

THE TIMKEN COMPANY  
NORTH CANTON, OHIO USA

**QVVSN14V060S**  
Double V-Lock Two-Bolt Pillow Block

Every reasonable effort has been made to ensure the accuracy of the information contained in this writing, but no liability is accepted for errors, omissions or for any other reason.

**FOR DISCUSSION ONLY**