



The Timken Company

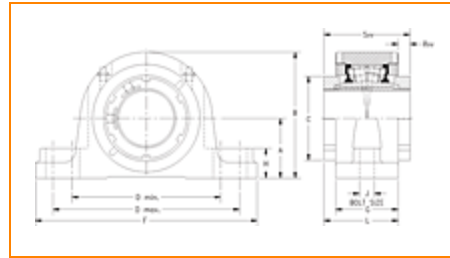
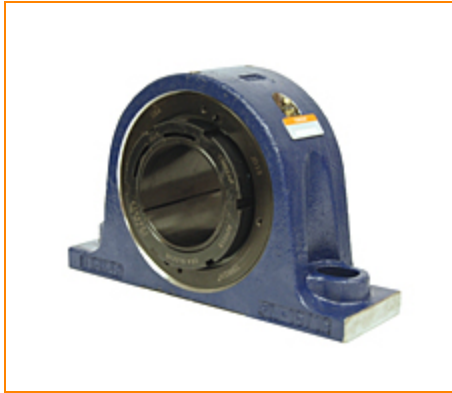
4500 Mt Pleasant St. NW

N. Canton, OH 44720

Phone: (234) 262-3000

E-Mail: CustomerCAD@timken.com • Web site: www.timken.com

Timken Part Number QVVSN14V065S, Double V-Lock Two-Bolt Pillow Block



[Specifications](#) | [Dimensions](#) | [Radial and Thrust Factors](#) | [Engineering Seal Speed](#) | [Engineering Bearing Attributes](#) | [Engineering Internal Radial Clearance](#)

Specifications

Engineering Group Mounted Bearing

Bearing Number 22214

Shaft Size 65 mm

Shaft Size Type Metric

Full Timken Part Number

- QVVSN14V065SB
- QVVSN14V065SC
- QVVSN14V065SEB
- QVVSN14V065SEC
- QVVSN14V065SEM
- QVVSN14V065SEN
- QVVSN14V065SEO
- QVVSN14V065SET
- QVVSN14V065SM
- QVVSN14V065SN
- QVVSN14V065SO
- QVVSN14V065ST
- QVVSN14V065STNG

Locking Style	Double V-Lock
Weight	37.0 lb 16.8 Kg
Housing Construction	Two-Bolt Pillow Block
UPC Code	0883450147088 0883450147095 0883450147125 0883450177603 0883450178082 0883450178266 0883450205191 0883450205573 0883450217613 0883450217996 0883450230032 0883450230414 0883450472807

Dimensions

Dimension A	3.15 in 80.0 mm
Dimension B	6.18 in 157.00 mm
Dimension C	3.7 in 94 mm
Dimension D Max	9.25 in 235.0 mm
Dimension D Min	7.72 in 196.0 mm
Dimension F	10.83 in 275.00 mm
Dimension G	2.910 in 74.00 mm

Dimension H	1.38 in 35.0 mm
Dimension J (Bolt Size)	0.625 in 16 mm
Dimension L	3.50 in 89.0 mm
Dimension RVV	0.59 in 15.0 mm
Dimension SVV	4.09 in 104.0 mm

Radial and Thrust Factors

C - Dynamic Load (Basic)	47800 lb 213 kN
C0 - Static Load	52000 lb 231 kN
e - Geometry Factor	0.24
Y1 - Geometry Factor	2.90
Y2 - Geometry Factor	4.32

Engineering Seal Speed

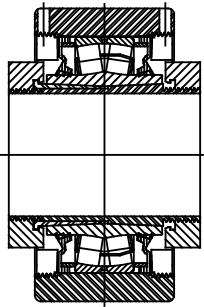
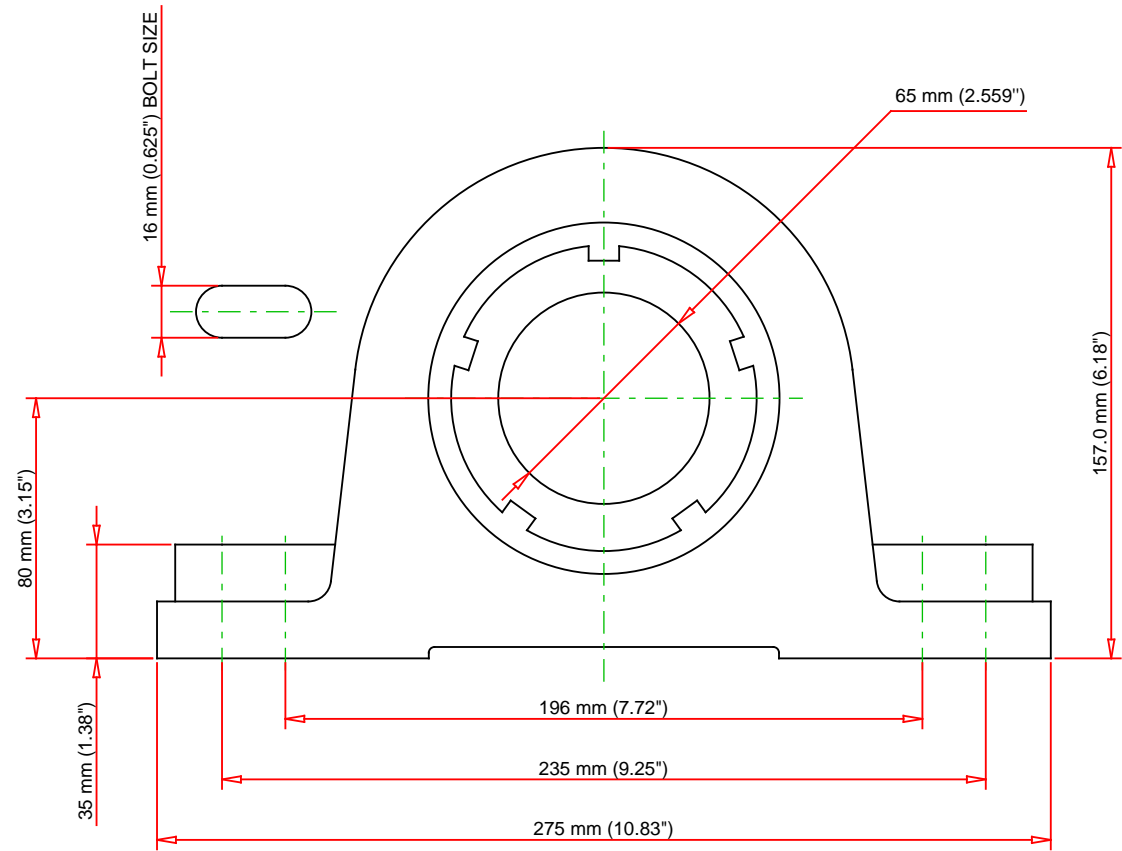
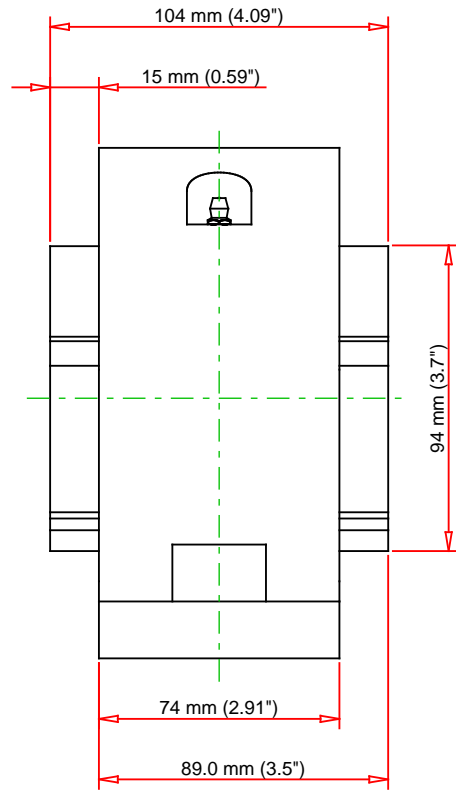
Oil Lubrication - M/N Seal	1700 rpm
Oil Lubrication - T Seal	3050 rpm
Oil Lubrication - B/C/O Seal	1400 rpm
Grease Lubrication - M/N Seal	1700 rpm
Grease Lubrication - T Seal	2600 rpm
Grease Lubrication - B/C/O Seal	1400 rpm

Engineering Bearing Attributes

Float	0.083 in 2.108 mm
Shaft Tolerance	0.0015 in 0.038 mm

Engineering Internal Radial Clearance

Eng Internal Radial Clearance - Min	0.0030
Eng Internal Radial Clearance - Max	0.0037
Pre Install Clearance Min	0.0030 in 0.075 mm
Pre Install Clearance Max	0.0037 in 0.094 mm



Note: Section View not to Scale

C - Dynamic Load	47800	lb	213	kN
C0 - Static Load	52000	lb	231	kN
Weight	37	lb	16.8	kg
Max. Speed T-Seals & Grease	2600	rpm		
Rad. Clearance - Max.	0.0037			

TIMKEN

THE TIMKEN COMPANY
NORTH CANTON, OHIO USA

QVVSN14V065S
Double V-Lock Two-Bolt Pillow Block

Every reasonable effort has been made to ensure the accuracy of the information contained in this writing, but no liability is accepted for errors, omissions or for any other reason.

FOR DISCUSSION ONLY