



The Timken Company

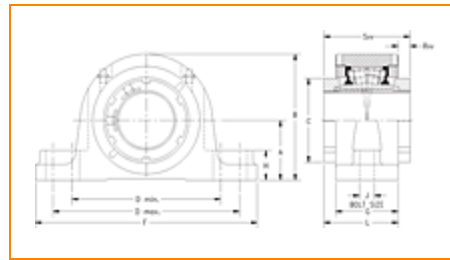
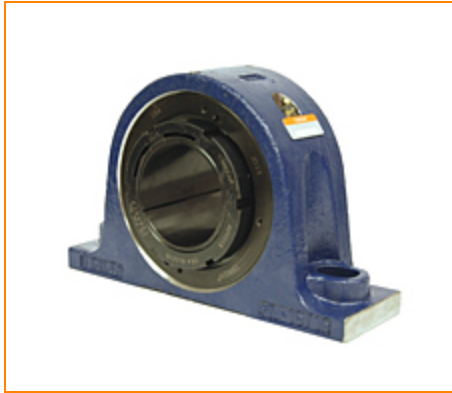
4500 Mt Pleasant St. NW

N. Canton, OH 44720

Phone: (234) 262-3000

E-Mail: CustomerCAD@timken.com • Web site: www.timken.com

Timken Part Number QVVSN16V070S, Double V-Lock Two-Bolt Pillow Block



[Specifications](#) | [Dimensions](#) | [Radial and Thrust Factors](#) | [Engineering Seal Speed](#) | [Engineering Bearing Attributes](#) | [Engineering Internal Radial Clearance](#)

Specifications

Engineering Group Mounted Bearing

Bearing Number 22216

Shaft Size 70 mm

Shaft Size Type Metric

Full Timken Part Number

- QVVSN16V070SB
- QVVSN16V070SC
- QVVSN16V070SEB
- QVVSN16V070SEC
- QVVSN16V070SEM
- QVVSN16V070SEN
- QVVSN16V070SEO
- QVVSN16V070SET
- QVVSN16V070SM
- QVVSN16V070SN
- QVVSN16V070SO
- QVVSN16V070ST
- QVVSN16V070STNG

Locking Style	Double V-Lock
Weight	46.0 lb 20.9 Kg
Housing Construction	Two-Bolt Pillow Block
UPC Code	0883450147972 0883450147989 0883450148016 0883450148023 0883450177634 0883450178112 0883450205221 0883450205603 0883450217644 0883450218023 0883450230063 0883450230445 0883450460378

Dimensions

Dimension A	3.74 in 95.0 mm
Dimension B	7.20 in 183 mm
Dimension C	4.17 in 106.0 mm
Dimension D Max	10.98 in 279.0 mm
Dimension D Min	9.49 in 241.0 mm
Dimension F	12.44 in 316.0 mm
Dimension G	2.990 in 76.00 mm

Dimension H	1.33 in 34.0 mm
Dimension J (Bolt Size)	0.750 in 20 mm
Dimension L	3.58 in 91.0 mm
Dimension RVV	0.59 in 15.0 mm
Dimension SVV	4.17 in 106.0 mm

Radial and Thrust Factors

C - Dynamic Load (Basic)	57200 lb 254 kN
C0 - Static Load	62500 lb 278 kN
e - Geometry Factor	0.22
Y1 - Geometry Factor	3.14
Y2 - Geometry Factor	4.67

Engineering Seal Speed

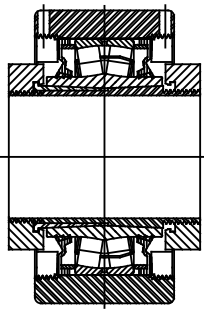
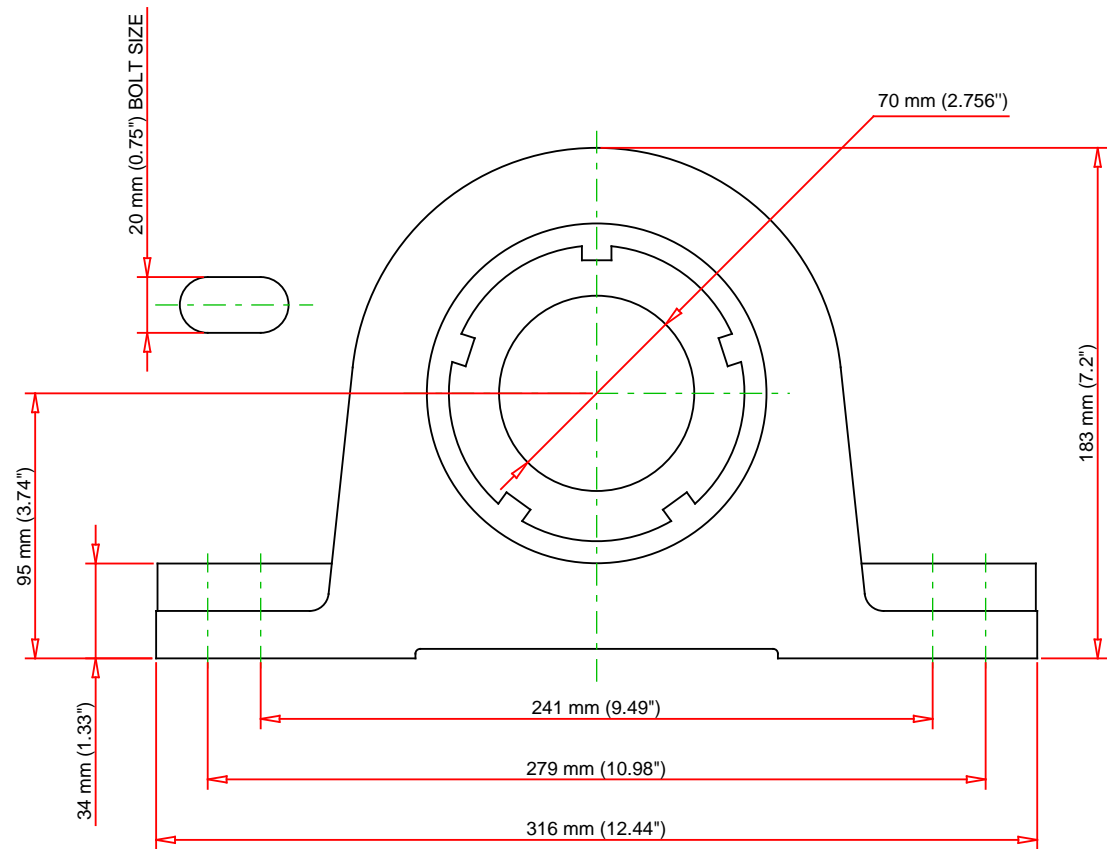
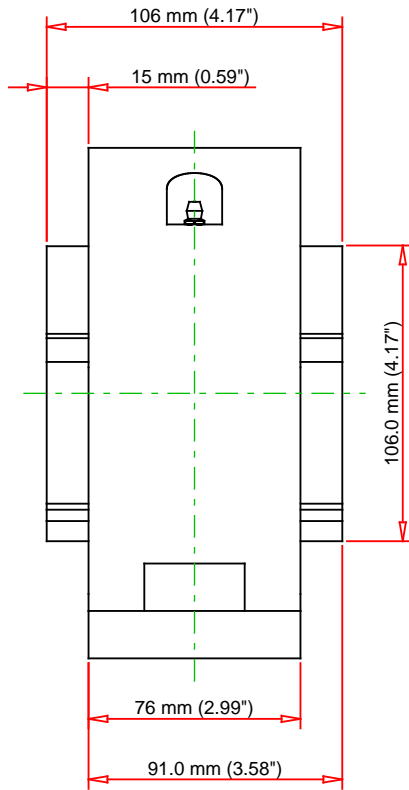
Oil Lubrication - M/N Seal	1500 rpm
Oil Lubrication - T Seal	2650 rpm
Oil Lubrication - B/C/O Seal	1200 rpm
Grease Lubrication - M/N Seal	1500 rpm
Grease Lubrication - T Seal	2200 rpm
Grease Lubrication - B/C/O Seal	1150 rpm

Engineering Bearing Attributes

Float	0.083 in 2.108 mm
Shaft Tolerance	0.0020 in 0.051 mm

Engineering Internal Radial Clearance

Eng Internal Radial Clearance - Min	0.0037
Eng Internal Radial Clearance - Max	0.0047
Pre Install Clearance Min	0.0037 in 0.095 mm
Pre Install Clearance Max	0.0047 in 0.120 mm



Note: Section View not to Scale

C - Dynamic Load	57200	lb	254	kN
C0 - Static Load	62500	lb	278	kN
Weight	46	lb	20.9	kg
Max. Speed T-Seals & Grease	2200	rpm		
Rad. Clearance - Max.	0.0047			

TIMKEN

THE TIMKEN COMPANY
NORTH CANTON, OHIO USA

QVVSN16V070S
Double V-Lock Two-Bolt Pillow Block

Every reasonable effort has been made to ensure the accuracy of the information contained in this writing, but no liability is accepted for errors, omissions or for any other reason.

FOR DISCUSSION ONLY