



The Timken Company

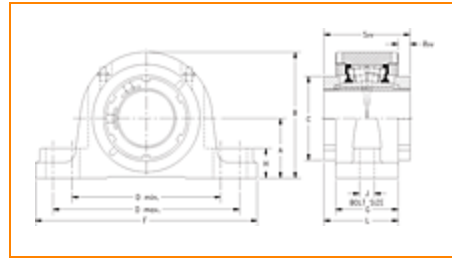
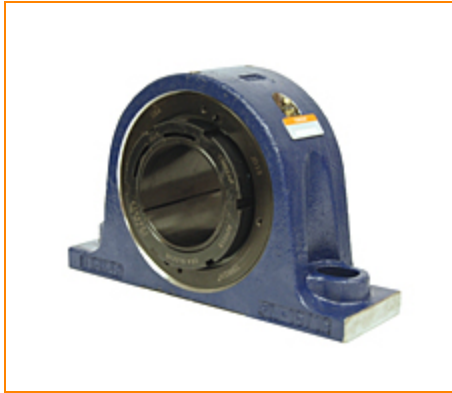
4500 Mt Pleasant St. NW

N. Canton, OH 44720

Phone: (234) 262-3000

E-Mail: CustomerCAD@timken.com • Web site: www.timken.com

Timken Part Number QVVSN19V085S, Double V-Lock Two-Bolt Pillow Block



[Specifications](#) | [Dimensions](#) | [Radial and Thrust Factors](#) | [Engineering Seal Speed](#) | [Engineering Bearing Attributes](#) | [Engineering Internal Radial Clearance](#)

Specifications

Engineering Group Mounted Bearing

Bearing Number 22219

Shaft Size 85 mm

Shaft Size Type Metric

Full Timken Part Number

- QVVSN19V085SB
- QVVSN19V085SC
- QVVSN19V085SEB
- QVVSN19V085SEC
- QVVSN19V085SEM
- QVVSN19V085SEN
- QVVSN19V085SEO
- QVVSN19V085SET
- QVVSN19V085SM
- QVVSN19V085SN
- QVVSN19V085SO
- QVVSN19V085ST

Locking Style	Double V-Lock
Weight	56 lb 25.40 Kg
Housing Construction	Two-Bolt Pillow Block
UPC Code	0883450087919 0883450099141 0883450099653 0883450108089 0883450108270 0883450114912 0883450115155 0883450130424 0883450130554 0883450138536 0883450138864 0883450358101

Dimensions

Dimension A	4.41 in 112.0 mm
Dimension B	8.34 in 212 mm
Dimension C	4.88 in 124.0 mm
Dimension D Max	11.50 in 292.0 mm
Dimension D Min	10.98 in 279.0 mm
Dimension F	13.58 in 345.00 mm
Dimension G	3.310 in 84.00 mm
Dimension H	1.53 in 39.0 mm

Dimension J (Bolt Size)	0.750 in 20 mm
Dimension L	4.02 in 102.0 mm
Dimension RVV	0.63 in 16 mm
Dimension SVV	4.65 in 118.0 mm

Radial and Thrust Factors

C - Dynamic Load (Basic)	86600 lb 385 kN
C0 - Static Load	99000 lb 441 kN
e - Geometry Factor	0.23
Y1 - Geometry Factor	2.88
Y2 - Geometry Factor	4.29

Engineering Seal Speed

Oil Lubrication - M/N Seal	1300 rpm
Oil Lubrication - T Seal	2200 rpm
Oil Lubrication - B/C/O Seal	1000 rpm
Grease Lubrication - M/N Seal	1300 rpm
Grease Lubrication - T Seal	1800 rpm
Grease Lubrication - B/C/O Seal	950 rpm

Engineering Bearing Attributes

Float	0.083 in 2.108 mm
--------------	----------------------

Shaft Tolerance	0.0030 in 0.076 mm
------------------------	-----------------------

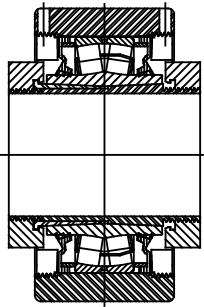
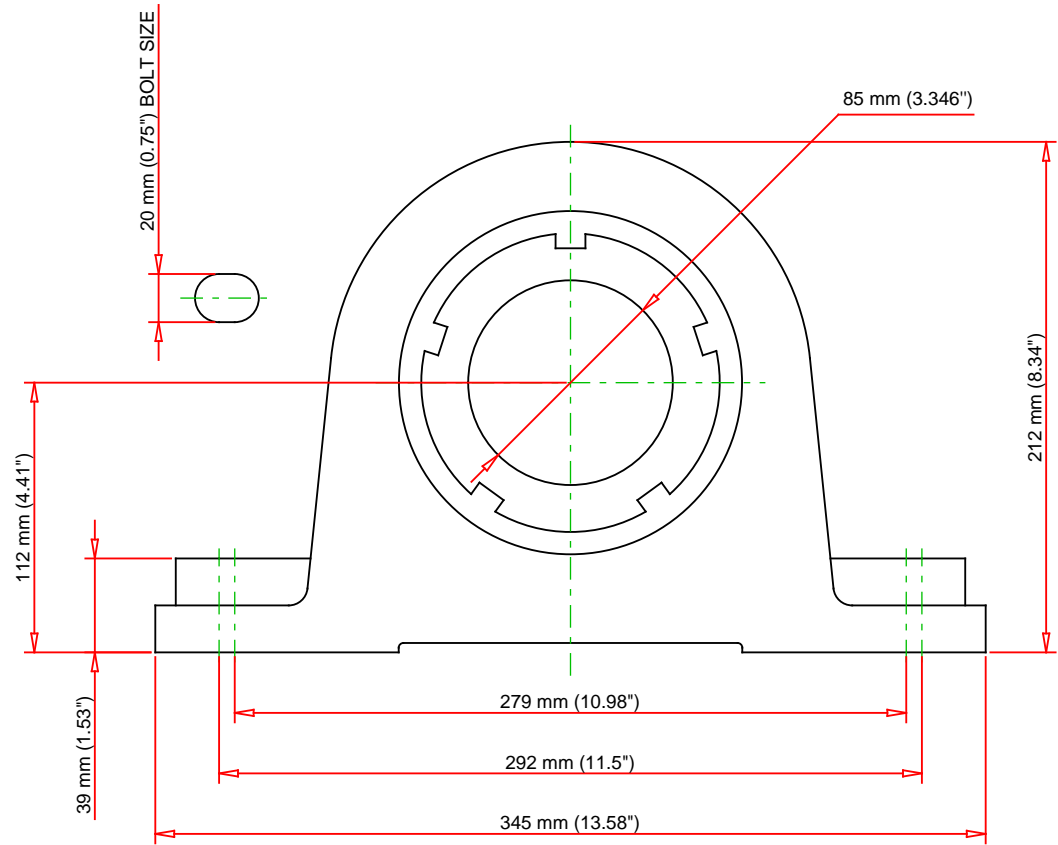
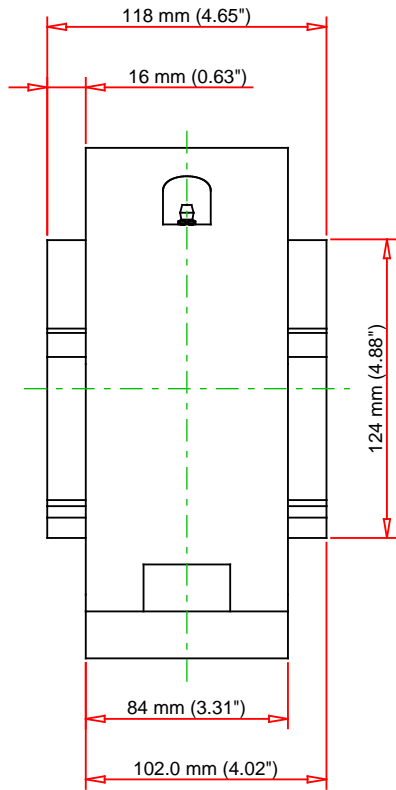
Engineering Internal Radial Clearance

Eng Internal Radial Clearance - Min	0.0043
--	--------

Eng Internal Radial Clearance - Max	0.0055
--	--------

Pre Install Clearance Min	0.0043 in 0.110 mm
----------------------------------	-----------------------

Pre Install Clearance Max	0.0055 in 0.140 mm
----------------------------------	-----------------------



Note: Section View not to Scale

C - Dynamic Load	86600	lb	385	kN
C0 - Static Load	99000	lb	441	kN
Weight	56	lb	25.4	kg
Max. Speed T-Seals & Grease	1800	rpm		
Rad. Clearance - Max.	0.0055			

TIMKEN

THE TIMKEN COMPANY
NORTH CANTON, OHIO USA

QVVSN19V085S
Double V-Lock Two-Bolt Pillow Block

Every reasonable effort has been made to ensure the accuracy of the information contained in this writing, but no liability is accepted for errors, omissions or for any other reason.

FOR DISCUSSION ONLY