



**The Timken Company**

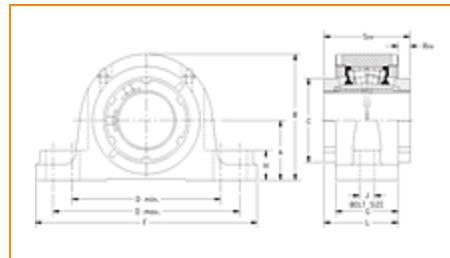
4500 Mt Pleasant St. NW

N. Canton, OH 44720

Phone: (234) 262-3000

E-Mail: [CustomerCAD@timken.com](mailto:CustomerCAD@timken.com) • Web site: [www.timken.com](http://www.timken.com)

Timken Part Number QVVSN19V090S, Double V-Lock Two-Bolt Pillow Block



[Specifications](#) | [Dimensions](#) | [Radial and Thrust Factors](#) | [Engineering Seal Speed](#) | [Engineering Bearing Attributes](#) | [Engineering Internal Radial Clearance](#)

## Specifications

**Engineering Group** Mounted Bearing

**Bearing Number** 22219

**Shaft Size** 90 mm

**Shaft Size Type** Metric

**Full Timken Part Number**

- QVVSN19V090SB
- QVVSN19V090SC
- QVVSN19V090SEB
- QVVSN19V090SEC
- QVVSN19V090SEM
- QVVSN19V090SEN
- QVVSN19V090SEO
- QVVSN19V090SET
- QVVSN19V090SM
- QVVSN19V090SMNP
- QVVSN19V090SN
- QVVSN19V090SO
- QVVSN19V090ST

<b>Locking Style</b>	Double V-Lock
<b>Weight</b>	56 lb 25.40 Kg
<b>Housing Construction</b>	Two-Bolt Pillow Block
<b>UPC Code</b>	0883450149662 0883450149679 0883450177726 0883450177788 0883450178204 0883450178280 0883450205313 0883450205696 0883450217736 0883450218115 0883450230155 0883450230537 0883450456517

## Dimensions

<b>Dimension A</b>	4.41 in 112.0 mm
<b>Dimension B</b>	8.34 in 212 mm
<b>Dimension C</b>	4.88 in 124.0 mm
<b>Dimension D Max</b>	12.87 in 327.0 mm
<b>Dimension D Min</b>	11.42 in 290.0 mm
<b>Dimension F</b>	14.96 in 380.00 mm
<b>Dimension G</b>	3.390 in 86.00 mm

<b>Dimension H</b>	1.53 in 39.0 mm
<b>Dimension J (Bolt Size)</b>	0.875 in 24 mm
<b>Dimension L</b>	4.02 in 102.0 mm
<b>Dimension RVV</b>	0.63 in 16 mm
<b>Dimension SVV</b>	4.65 in 118.0 mm

### Radial and Thrust Factors

<b>C - Dynamic Load (Basic)</b>	86600 lb 385 kN
<b>C0 - Static Load</b>	99000 lb 441 kN
<b>e - Geometry Factor</b>	0.23
<b>Y1 - Geometry Factor</b>	2.88
<b>Y2 - Geometry Factor</b>	4.29

### Engineering Seal Speed

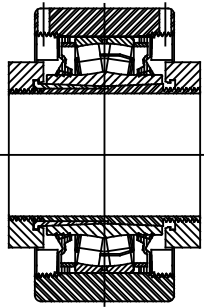
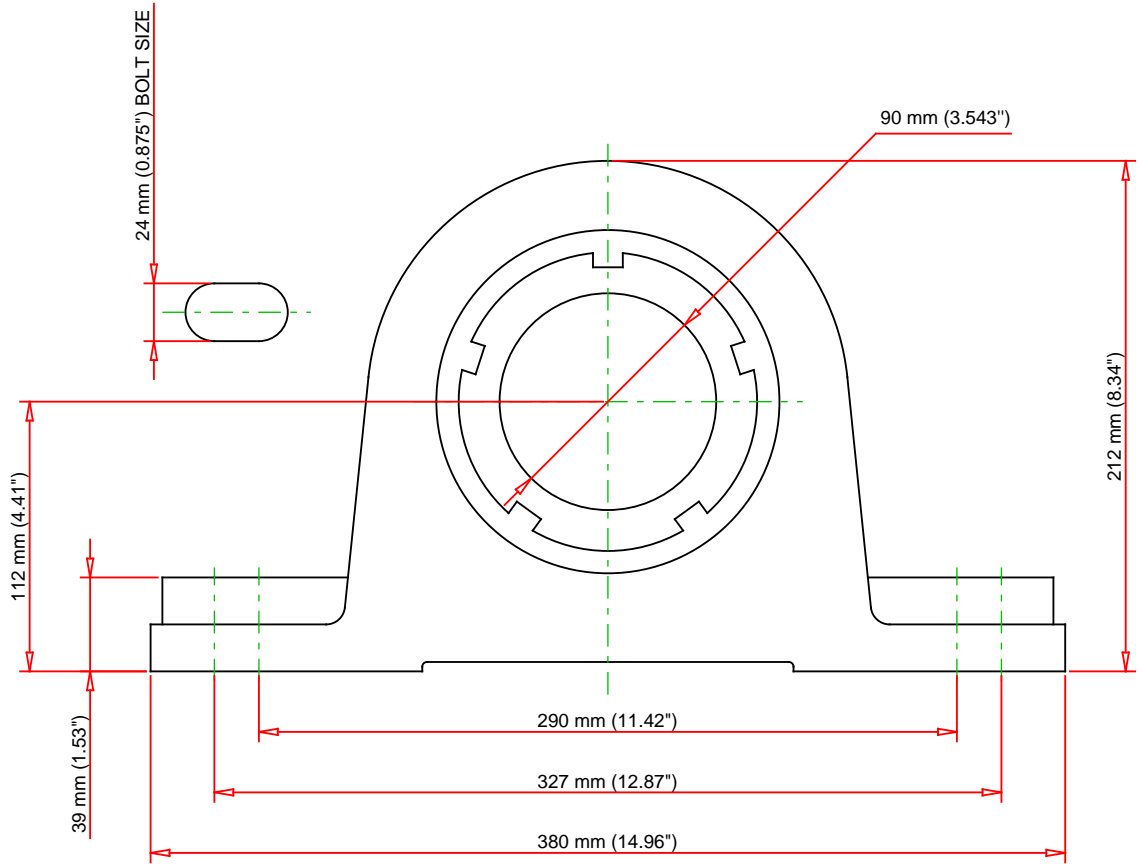
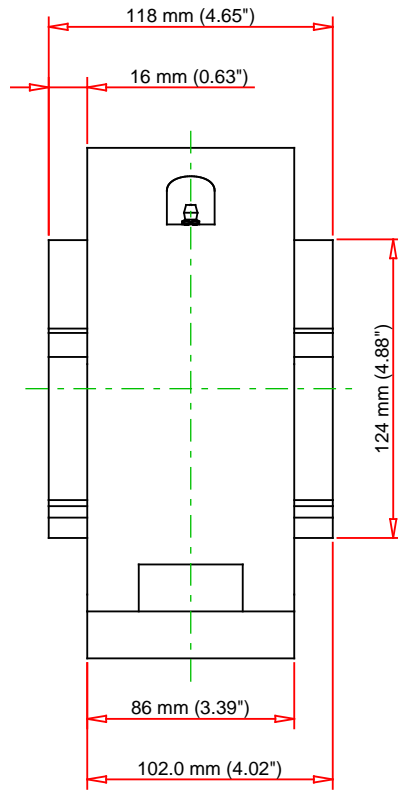
<b>Oil Lubrication - M/N Seal</b>	1300 rpm
<b>Oil Lubrication - T Seal</b>	2200 rpm
<b>Oil Lubrication - B/C/O Seal</b>	1000 rpm
<b>Grease Lubrication - M/N Seal</b>	1300 rpm
<b>Grease Lubrication - T Seal</b>	1800 rpm
<b>Grease Lubrication - B/C/O Seal</b>	950 rpm

## Engineering Bearing Attributes

<b>Float</b>	0.083 in 2.108 mm
<b>Shaft Tolerance</b>	0.0030 in 0.076 mm

## Engineering Internal Radial Clearance

<b>Eng Internal Radial Clearance - Min</b>	0.0043
<b>Eng Internal Radial Clearance - Max</b>	0.0055
<b>Pre Install Clearance Min</b>	0.0043 in 0.110 mm
<b>Pre Install Clearance Max</b>	0.0055 in 0.140 mm



Note: Section View not to Scale

C - Dynamic Load	86600	lb	385	kN
C0 - Static Load	99000	lb	441	kN
Weight	56	lb	25.4	kg
Max. Speed T-Seals & Grease	1800	rpm		
Rad. Clearance - Max.	0.0055			

**TIMKEN**

THE TIMKEN COMPANY  
NORTH CANTON, OHIO USA

**QVVSN19V090S**

Double V-Lock Two-Bolt Pillow Block

Every reasonable effort has been made to ensure the accuracy of the information contained in this writing, but no liability is accepted for errors, omissions or for any other reason.

**FOR DISCUSSION ONLY**