

TIMKEN**The Timken Company**

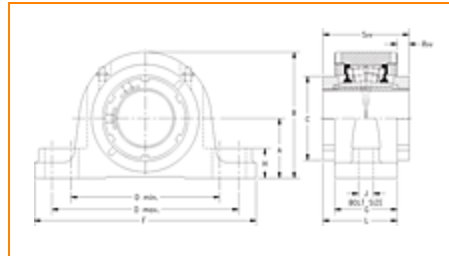
4500 Mt Pleasant St. NW

N. Canton, OH 44720

Phone: (234) 262-3000

E-Mail: CustomerCAD@timken.com • Web site: www.timken.com

Timken Part Number QVVSN22V100S, Double V-Lock Two-Bolt Pillow Block



[Specifications](#) | [Dimensions](#) | [Radial and Thrust Factors](#) | [Engineering Seal Speed](#) | [Engineering Bearing Attributes](#) | [Engineering Internal Radial Clearance](#)

Specifications

Engineering Group	Mounted Bearing
-------------------	-----------------

Bearing Number	22222
----------------	-------

Shaft Size	100 mm
------------	--------

Shaft Size Type	Metric
-----------------	--------

Full Timken Part Number	QVVSN22V100SB
	QVVSN22V100SC
	QVVSN22V100SEB
	QVVSN22V100SEC
	QVVSN22V100SEM
	QVVSN22V100SEN
	QVVSN22V100SEO
	QVVSN22V100SET
	QVVSN22V100SM
	QVVSN22V100SN
	QVVSN22V100SO
	QVVSN22V100ST

Locking Style	Double V-Lock
Weight	79 lb 35.80 Kg
Housing Construction	Two-Bolt Pillow Block
UPC Code	0883450150248 0883450150255 0883450177757 0883450177795 0883450178235 0883450178310 0883450205344 0883450205726 0883450217767 0883450218146 0883450230186 0883450230568

Dimensions

Dimension A	4.92 in 125.0 mm
Dimension B	9.49 in 241.0 mm
Dimension C	5.51 in 140.0 mm
Dimension D Max	14.41 in 366.0 mm
Dimension D Min	12.56 in 319.0 mm
Dimension F	16.14 in 410.00 mm
Dimension G	3.980 in 101.00 mm
Dimension H	2.00 in 50.0 mm

Dimension J (Bolt Size)	0.875 in 24 mm
Dimension L	4.57 in 116.0 mm
Dimension RVV	0.59 in 15.0 mm
Dimension SVV	5.12 in 130.0 mm

Radial and Thrust Factors

C - Dynamic Load (Basic)	125000 lb 555 kN
C0 - Static Load	147000 lb 653 kN
e - Geometry Factor	0.25
Y1 - Geometry Factor	2.73
Y2 - Geometry Factor	4.06

Engineering Seal Speed

Oil Lubrication - M/N Seal	900 rpm
Oil Lubrication - T Seal	1700 rpm
Oil Lubrication - B/C/O Seal	600 rpm
Grease Lubrication - M/N Seal	900 rpm
Grease Lubrication - T Seal	1200 rpm
Grease Lubrication - B/C/O Seal	600 rpm

Engineering Bearing Attributes

Float	0.083 in 2.108 mm
--------------	----------------------

Shaft Tolerance	0.0030 in 0.076 mm
------------------------	-----------------------

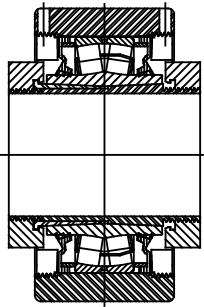
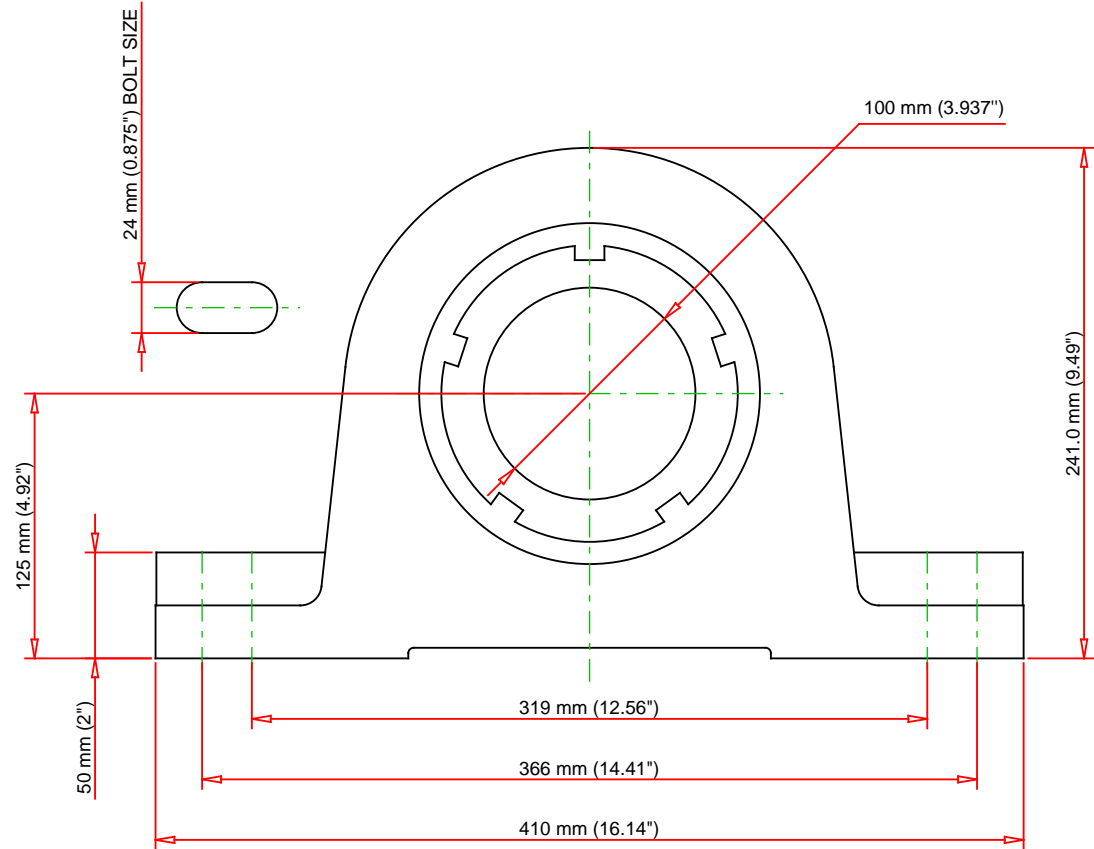
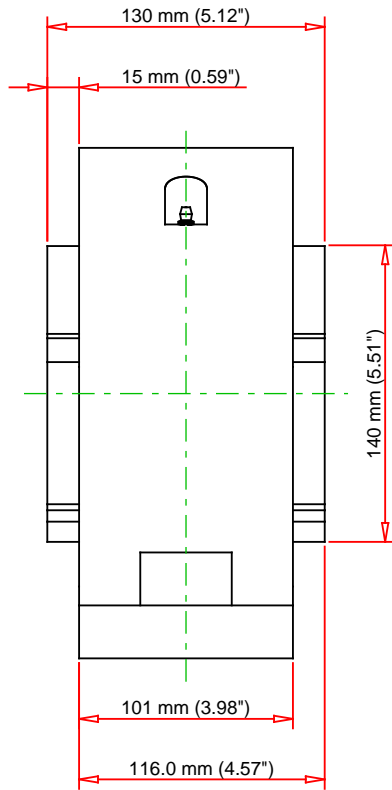
Engineering Internal Radial Clearance

Eng Internal Radial Clearance - Min	0.0053
--	--------

Eng Internal Radial Clearance - Max	0.0067
--	--------

Pre Install Clearance Min	0.0053 in 0.135 mm
----------------------------------	-----------------------

Pre Install Clearance Max	0.0067 in 0.170 mm
----------------------------------	-----------------------



Note: Section View not to Scale

C - Dynamic Load	125000	lb	555	kN
C0 - Static Load	147000	lb	653	kN
Weight	79	lb	35.8	kg
Max. Speed T-Seals & Grease	1200	rpm		
Rad. Clearance - Max.	0.0067			

TIMKEN

THE TIMKEN COMPANY
NORTH CANTON, OHIO USA

QVVS22V100S
Double V-Lock Two-Bolt Pillow Block

Every reasonable effort has been made to ensure the accuracy of the information contained in this writing, but no liability is accepted for errors, omissions or for any other reason.

FOR DISCUSSION ONLY