



The Timken Company

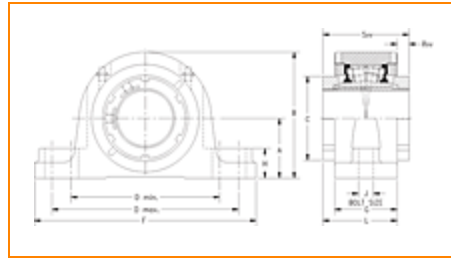
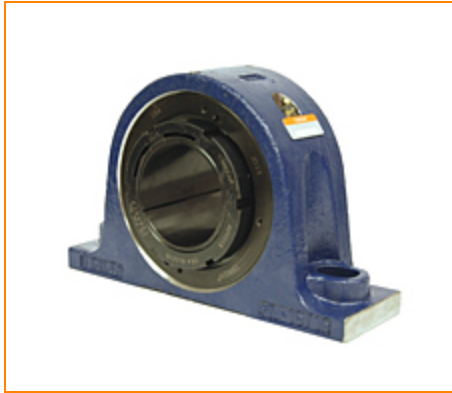
4500 Mt Pleasant St. NW

N. Canton, OH 44720

Phone: (234) 262-3000

E-Mail: CustomerCAD@timken.com • Web site: www.timken.com

Timken Part Number QVVSN26V110S, Double V-Lock Two-Bolt Pillow Block



[Specifications](#) | [Dimensions](#) | [Radial and Thrust Factors](#) | [Engineering Seal Speed](#) | [Engineering Bearing Attributes](#) | [Engineering Internal Radial Clearance](#)

Specifications

Engineering Group Mounted Bearing

Bearing Number 22226

Shaft Size 110 mm

Shaft Size Type Metric

Full Timken Part Number

- QVVSN26V110SB
- QVVSN26V110SC
- QVVSN26V110SEB
- QVVSN26V110SEC
- QVVSN26V110SEM
- QVVSN26V110SEN
- QVVSN26V110SEO
- QVVSN26V110SET
- QVVSN26V110SM
- QVVSN26V110SN
- QVVSN26V110SO
- QVVSN26V110ST

Locking Style	Double V-Lock
Weight	88 lb 39.9 Kg
Housing Construction	Two-Bolt Pillow Block
UPC Code	0883450081443 0883450081511 0883450286947 0883450287029 0883450288460 0883450288545 0883450289986 0883450290067 0883450291507 0883450291583 0883450293020 0883450293105

Dimensions

Dimension A	5.51 in 140.0 mm
Dimension B	10.630 in 270.00 mm
Dimension C	6.89 in 175 mm
Dimension D Max	14.37 in 365.0 mm
Dimension D Min	13.07 in 332.0 mm
Dimension F	16.14 in 410.00 mm
Dimension G	4.450 in 113.00 mm
Dimension H	1.53 in 39.0 mm

Dimension J (Bolt Size)	0.875 in 24 mm
Dimension L	5.75 in 146 mm
Dimension RVV	1.30 in 33.0 mm
Dimension SVV	7.01 in 178.0 mm

Radial and Thrust Factors

C - Dynamic Load (Basic)	170000 lb 757 kN
C0 - Static Load	212000 lb 945 kN
e - Geometry Factor	0.26
Y1 - Geometry Factor	2.62
Y2 - Geometry Factor	3.90

Engineering Seal Speed

Oil Lubrication - M/N Seal	700 rpm
Oil Lubrication - T Seal	1500 rpm
Oil Lubrication - B/C/O Seal	400 rpm
Grease Lubrication - M/N Seal	700 rpm
Grease Lubrication - T Seal	1000 rpm
Grease Lubrication - B/C/O Seal	400 rpm

Engineering Bearing Attributes

Float	0.083 in 2.108 mm
--------------	----------------------

Shaft Tolerance	0.0050 in 0.127 mm
------------------------	-----------------------

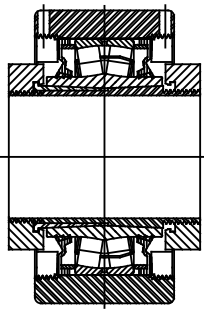
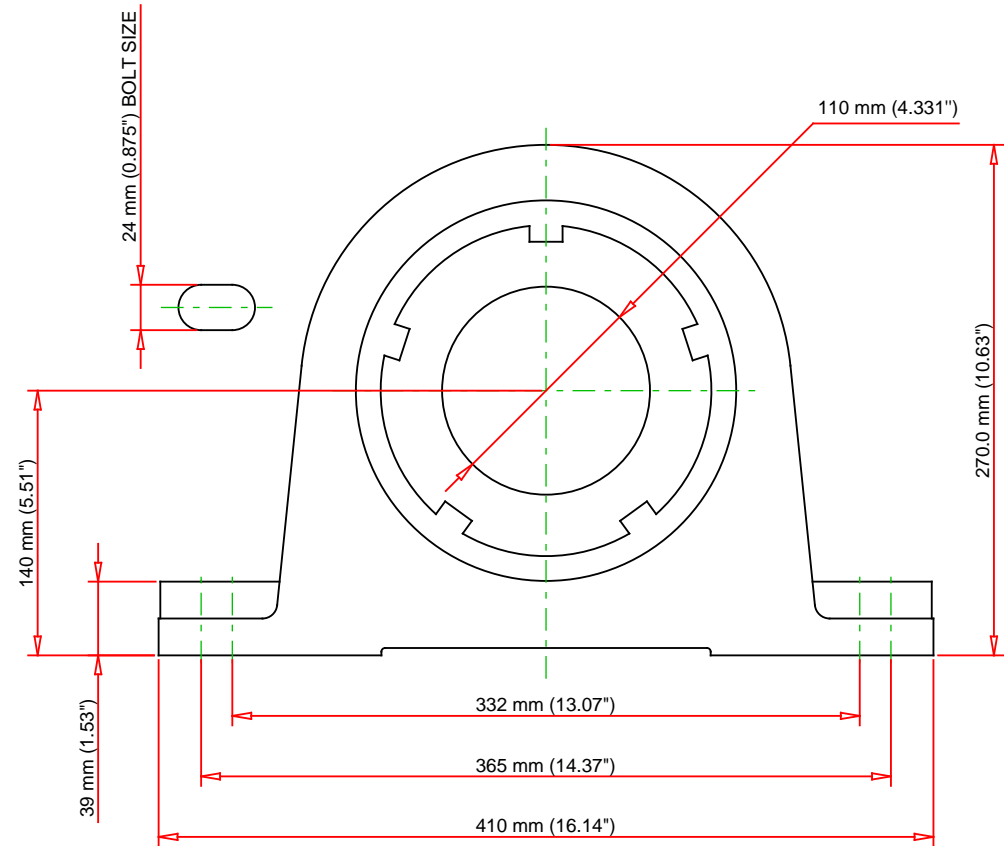
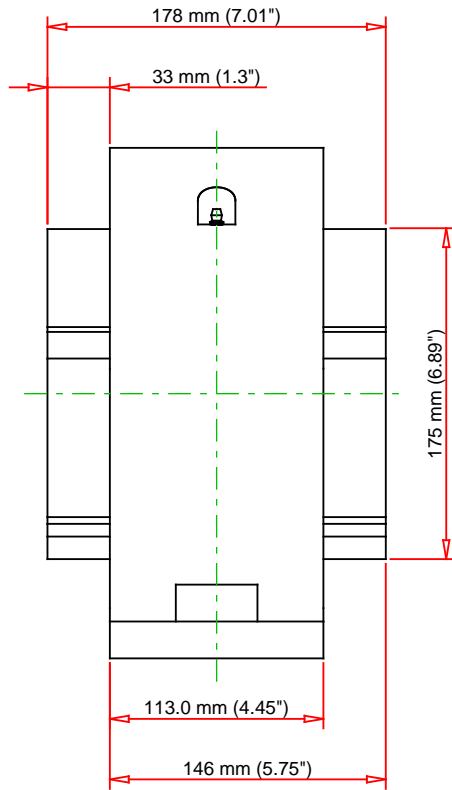
Engineering Internal Radial Clearance

Eng Internal Radial Clearance - Min	0.0053
--	--------

Eng Internal Radial Clearance - Max	0.0067
--	--------

Pre Install Clearance Min	0.0053 in 0.135 mm
----------------------------------	-----------------------

Pre Install Clearance Max	0.0067 in 0.170 mm
----------------------------------	-----------------------



Note: Section View not to Scale

C - Dynamic Load	170000	lb	757	kN
C0 - Static Load	212000	lb	945	kN
Weight	88	lb	39.9	kg
Max. Speed T-Seals & Grease	1000	rpm		
Rad. Clearance - Max.	0.0067			

TIMKEN

THE TIMKEN COMPANY
NORTH CANTON, OHIO USA

QVVSN26V110S

Double V-Lock Two-Bolt Pillow Block

Every reasonable effort has been made to ensure the accuracy of the information contained in this writing, but no liability is accepted for errors, omissions or for any other reason.

FOR DISCUSSION ONLY