



**The Timken Company**

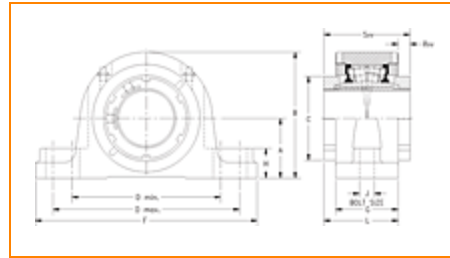
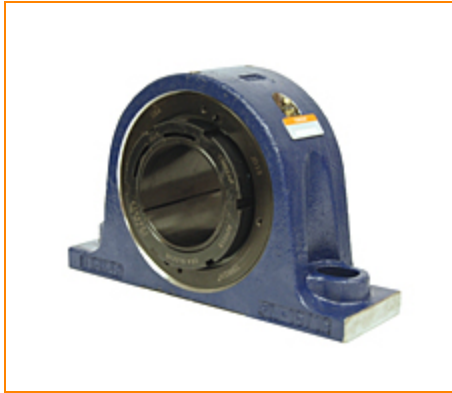
4500 Mt Pleasant St. NW

N. Canton, OH 44720

Phone: (234) 262-3000

E-Mail: [CustomerCAD@timken.com](mailto:CustomerCAD@timken.com) • Web site: [www.timken.com](http://www.timken.com)

Timken Part Number QVVSN26V115S, Double V-Lock Two-Bolt Pillow Block



[Specifications](#) | [Dimensions](#) | [Radial and Thrust Factors](#) | [Engineering Seal Speed](#) | [Engineering Bearing Attributes](#) | [Engineering Internal Radial Clearance](#)

## Specifications

**Engineering Group** Mounted Bearing

**Bearing Number** 22226

**Shaft Size** 115 mm

**Shaft Size Type** Metric

**Full Timken Part Number**

- QVVSN26V115SB
- QVVSN26V115SC
- QVVSN26V115SEB
- QVVSN26V115SEC
- QVVSN26V115SEM
- QVVSN26V115SEN
- QVVSN26V115SEO
- QVVSN26V115SET
- QVVSN26V115SM
- QVVSN26V115SN
- QVVSN26V115SO
- QVVSN26V115ST
- QVVSN26V115STNG

<b>Locking Style</b>	Double V-Lock
<b>Weight</b>	88 lb 39.9 Kg
<b>Housing Construction</b>	Two-Bolt Pillow Block
<b>UPC Code</b>	0883450081542 0883450081610 0883450286978 0883450287050 0883450288491 0883450288576 0883450290012 0883450290098 0883450291538 0883450291613 0883450293051 0883450293136 0883450460507

## Dimensions

<b>Dimension A</b>	5.91 in 150.0 mm
<b>Dimension B</b>	11.02 in 280.0 mm
<b>Dimension C</b>	6.89 in 175 mm
<b>Dimension D Max</b>	15.75 in 400.0 mm
<b>Dimension D Min</b>	14.45 in 367.0 mm
<b>Dimension F</b>	17.52 in 445 mm
<b>Dimension G</b>	4.450 in 113.00 mm

<b>Dimension H</b>	1.92 in 49.0 mm
<b>Dimension J (Bolt Size)</b>	0.875 in 24 mm
<b>Dimension L</b>	5.75 in 146 mm
<b>Dimension RVV</b>	1.30 in 33.0 mm
<b>Dimension SVV</b>	7.01 in 178.0 mm

### Radial and Thrust Factors

<b>C - Dynamic Load (Basic)</b>	170000 lb 757 kN
<b>C0 - Static Load</b>	212000 lb 945 kN
<b>e - Geometry Factor</b>	0.26
<b>Y1 - Geometry Factor</b>	2.62
<b>Y2 - Geometry Factor</b>	3.90

### Engineering Seal Speed

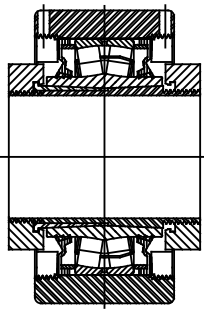
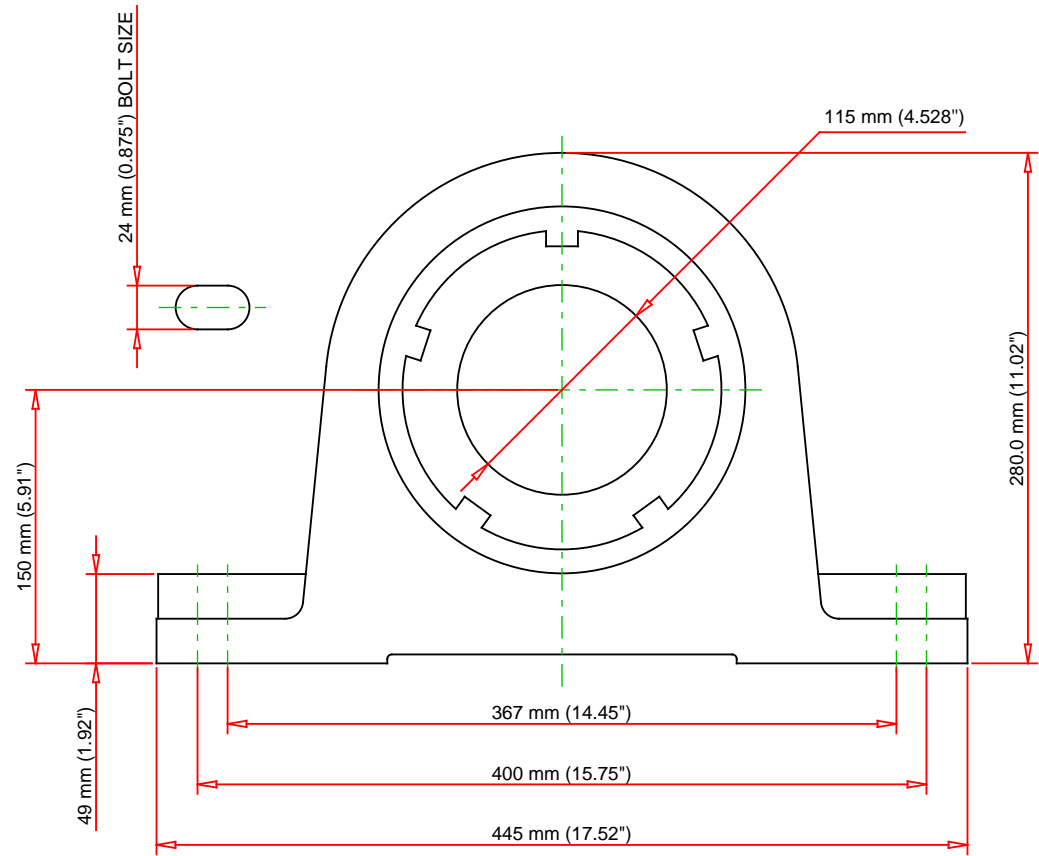
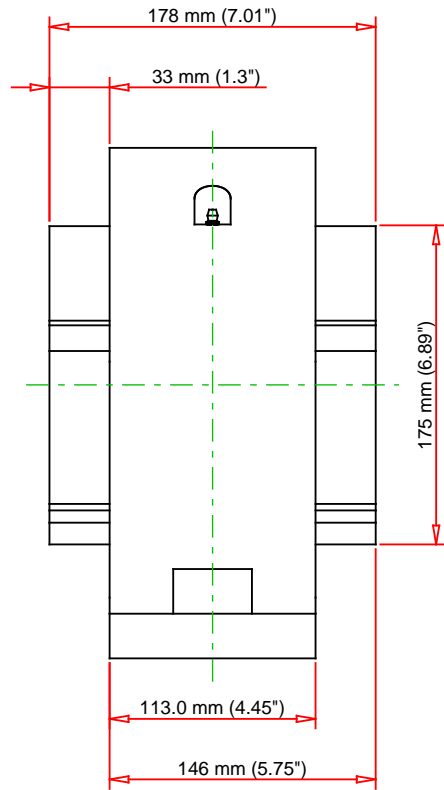
<b>Oil Lubrication - M/N Seal</b>	700 rpm
<b>Oil Lubrication - T Seal</b>	1500 rpm
<b>Oil Lubrication - B/C/O Seal</b>	400 rpm
<b>Grease Lubrication - M/N Seal</b>	700 rpm
<b>Grease Lubrication - T Seal</b>	1000 rpm
<b>Grease Lubrication - B/C/O Seal</b>	400 rpm

## Engineering Bearing Attributes

<b>Float</b>	0.083 in 2.108 mm
<b>Shaft Tolerance</b>	0.0050 in 0.127 mm

## Engineering Internal Radial Clearance

<b>Eng Internal Radial Clearance - Min</b>	0.0053
<b>Eng Internal Radial Clearance - Max</b>	0.0067
<b>Pre Install Clearance Min</b>	0.0053 in 0.135 mm
<b>Pre Install Clearance Max</b>	0.0067 in 0.170 mm



Note: Section View not to Scale

C - Dynamic Load	170000	lb	757	kN
C0 - Static Load	212000	lb	945	kN
Weight	88	lb	39.9	kg
Max. Speed T-Seals & Grease	1000	rpm		
Rad. Clearance - Max.	0.0067			

**TIMKEN**

THE TIMKEN COMPANY  
NORTH CANTON, OHIO USA

**QVVSN26V115S**

Double V-Lock Two-Bolt Pillow Block

Every reasonable effort has been made to ensure the accuracy of the information contained in this writing, but no liability is accepted for errors, omissions or for any other reason.

**FOR DISCUSSION ONLY**