



**The Timken Company**

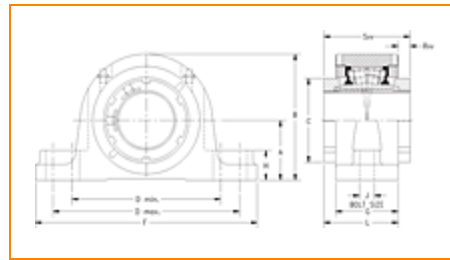
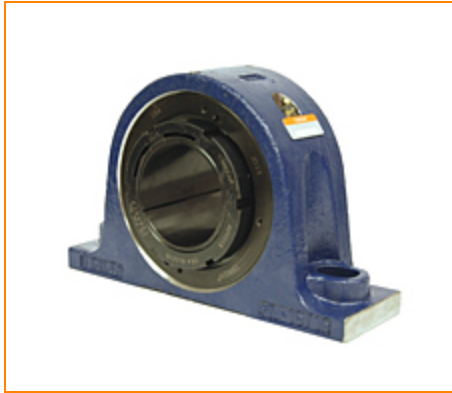
4500 Mt Pleasant St. NW

N. Canton, OH 44720

Phone: (234) 262-3000

E-Mail: [CustomerCAD@timken.com](mailto:CustomerCAD@timken.com) • Web site: [www.timken.com](http://www.timken.com)

Timken Part Number QVVSN28V125S, Double V-Lock Two-Bolt Pillow Block



[Specifications](#) | [Dimensions](#) | [Radial and Thrust Factors](#) | [Engineering Seal Speed](#) | [Engineering Bearing Attributes](#) | [Engineering Internal Radial Clearance](#)

## Specifications

**Engineering Group** Mounted Bearing

**Bearing Number** 22228

**Shaft Size** 125 mm

**Shaft Size Type** Metric

**Full Timken Part Number**

- QVVSN28V125SB
- QVVSN28V125SC
- QVVSN28V125SEB
- QVVSN28V125SEC
- QVVSN28V125SEM
- QVVSN28V125SEN
- QVVSN28V125SEO
- QVVSN28V125SET
- QVVSN28V125SM
- QVVSN28V125SN
- QVVSN28V125SO
- QVVSN28V125ST

<b>Locking Style</b>	Double V-Lock
<b>Weight</b>	88 lb 39.9 Kg
<b>Housing Construction</b>	Two-Bolt Pillow Block
<b>UPC Code</b>	0883450087414 0883450088046 0883450099318 0883450099684 0883450108126 0883450108324 0883450114943 0883450115186 0883450130455 0883450130585 0883450138628 0883450138932

## Dimensions

<b>Dimension A</b>	5.91 in 150.0 mm
<b>Dimension B</b>	11.42 in 290.00 mm
<b>Dimension C</b>	7.48 in 190.0 mm
<b>Dimension D Max</b>	17.13 in 435.0 mm
<b>Dimension D Min</b>	15.83 in 402.0 mm
<b>Dimension F</b>	19.68 in 500 mm
<b>Dimension G</b>	4.610 in 117.00 mm
<b>Dimension H</b>	1.92 in 49.0 mm

<b>Dimension J (Bolt Size)</b>	1.250 in 30 mm
<b>Dimension L</b>	5.83 in 148 mm
<b>Dimension RVV</b>	1.22 in 31.0 mm
<b>Dimension SVV</b>	7.01 in 178.0 mm

### Radial and Thrust Factors

<b>C - Dynamic Load (Basic)</b>	194000 lb 863 kN
<b>C0 - Static Load</b>	237000 lb 1060 kN
<b>e - Geometry Factor</b>	0.25
<b>Y1 - Geometry Factor</b>	2.67
<b>Y2 - Geometry Factor</b>	3.98

### Engineering Seal Speed

<b>Oil Lubrication - M/N Seal</b>	650 rpm
<b>Oil Lubrication - T Seal</b>	1200 rpm
<b>Oil Lubrication - B/C/O Seal</b>	350 rpm
<b>Grease Lubrication - M/N Seal</b>	650 rpm
<b>Grease Lubrication - T Seal</b>	900 rpm
<b>Grease Lubrication - B/C/O Seal</b>	350 rpm

### Engineering Bearing Attributes

<b>Float</b>	0.083 in 2.108 mm
--------------	----------------------

<b>Shaft Tolerance</b>	0.0050 in 0.127 mm
------------------------	-----------------------

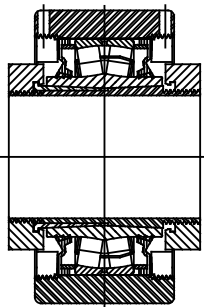
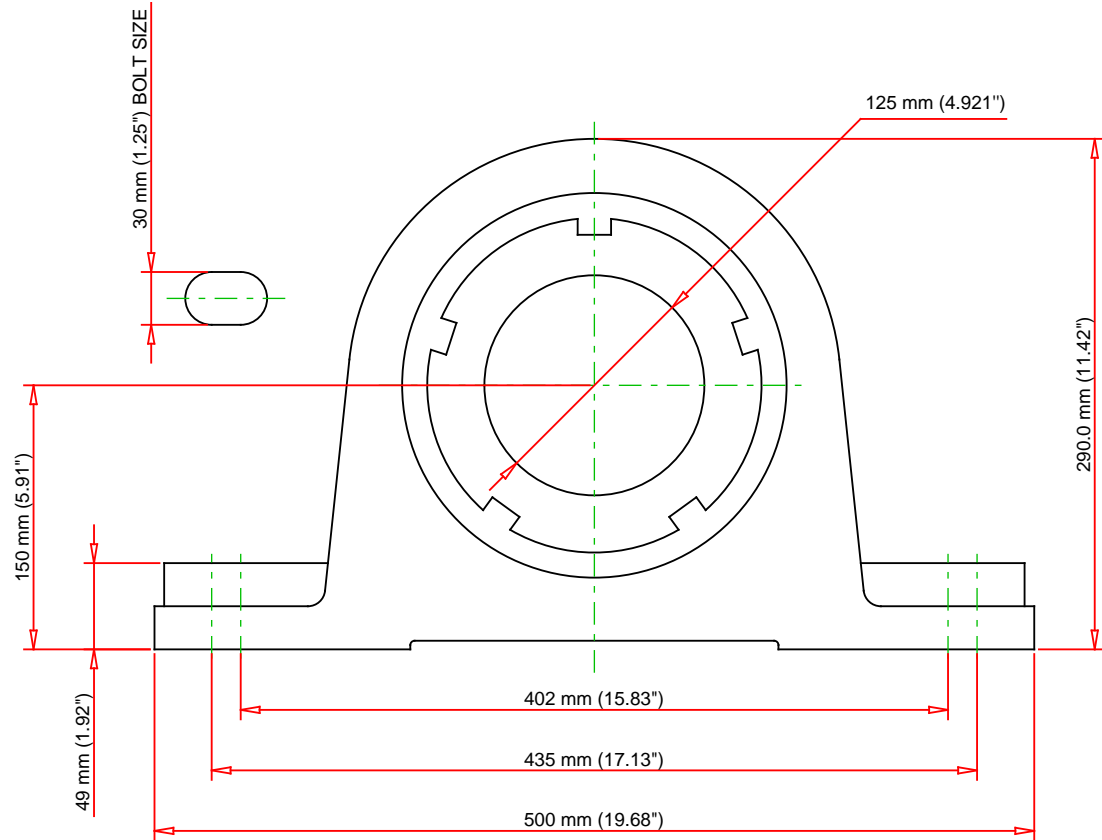
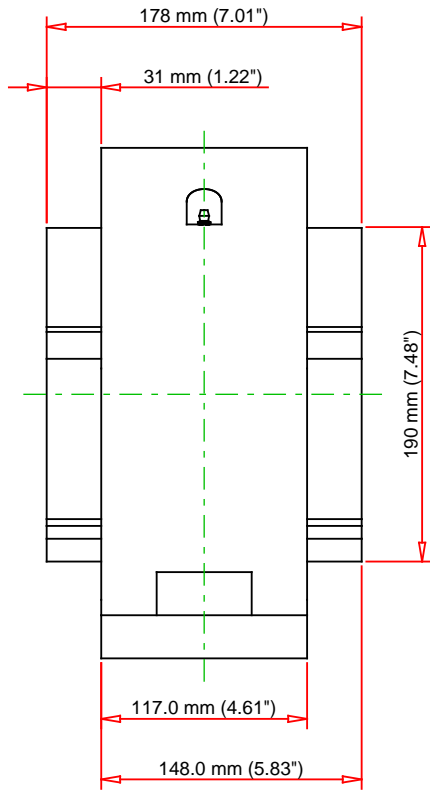
## Engineering Internal Radial Clearance

<b>Eng Internal Radial Clearance - Min</b>	0.0063
--	--------

<b>Eng Internal Radial Clearance - Max</b>	0.0079
--	--------

<b>Pre Install Clearance Min</b>	0.0063 in 0.160 mm
----------------------------------	-----------------------

<b>Pre Install Clearance Max</b>	0.0079 in 0.201 mm
----------------------------------	-----------------------



Note: Section View not to Scale

C - Dynamic Load	194000	lb	863	kN
C0 - Static Load	237000	lb	1060	kN
Weight	88	lb	39.9	kg
Max. Speed T-Seals & Grease	900	rpm		
Rad. Clearance - Max.	0.0079			

**TIMKEN**

THE TIMKEN COMPANY  
NORTH CANTON, OHIO USA

**QVVS28V125S**  
Double V-Lock Two-Bolt Pillow Block

Every reasonable effort has been made to ensure the accuracy of the information contained in this writing, but no liability is accepted for errors, omissions or for any other reason.

**FOR DISCUSSION ONLY**