

Série  
**879**

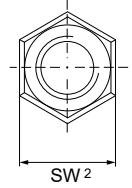
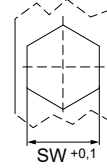
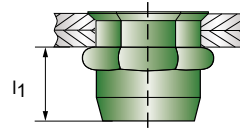
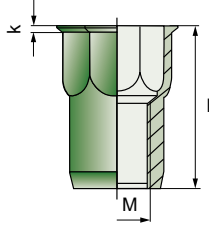
DONNÉES  
**CAO**  
EN LIGNE



# Écrous à sertir en aveugle HEXATOP-E-KLSK

inox A2

tête affleurante | semi-hexagonal | ouvert



[1.4567]

M	$\frac{d}{D}$	l	N°	
<b>M4</b>	0,5 - 2,5	11,0	10879040250	500
	2,0 - 4,0	12,5	10879040400	500
<b>SW 6,0</b>	<b>SW<sup>2</sup> 6,8</b>	<b>k 0,5</b>	<b>l<sub>1</sub> max. 8,5</b>	$\curvearrowright$ 5 Nm $\updownarrow$ 6000 N
<b>M5</b>	0,5 - 3,0	12,0	10879050300	500
	3,0 - 4,5	13,5	10879050450	500
<b>SW 7,0</b>	<b>SW<sup>2</sup> 8,0</b>	<b>k 0,5</b>	<b>l<sub>1</sub> max. 9,0</b>	$\curvearrowright$ 7 Nm $\updownarrow$ 9500 N
<b>M6</b>	0,5 - 3,0	14,0	10879060300	500
	3,0 - 5,0	16,0	10879060500	500
<b>SW 9,0</b>	<b>SW<sup>2</sup> 10,0</b>	<b>k 0,5</b>	<b>l<sub>1</sub> max. 10,0</b>	$\curvearrowright$ 13 Nm $\updownarrow$ 16000 N

M	$\frac{d}{D}$	l	N°	
<b>M8</b>	0,5 - 3,0	16,0	10879080300	250
	3,0 - 5,5	18,5	10879080550	250
<b>SW 11,0</b>	<b>SW<sup>2</sup> 12,0</b>	<b>k 0,5</b>	<b>l<sub>1</sub> max. 11,5</b>	$\curvearrowright$ 25 Nm $\updownarrow$ 26000 N
<b>M10</b>	1,0 - 3,5	19,0	10879100350	250
<b>SW 13,0</b>	<b>SW<sup>2</sup> 14,4</b>	<b>k 0,7</b>	<b>l<sub>1</sub> max. 14,0</b>	$\curvearrowright$ 55 Nm $\updownarrow$ 39000 N
<b>M12</b>	1,0 - 4,0	24,0	10879120400	100
<b>SW 16,0</b>	<b>SW<sup>2</sup> 17,3</b>	<b>k 0,7</b>	<b>l<sub>1</sub> max. 19,0</b>	$\curvearrowright$ 85 Nm $\updownarrow$ 55000 N