

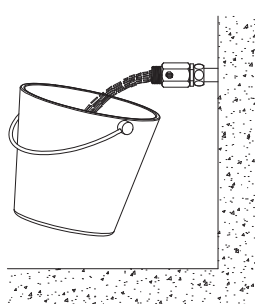
DELABIE

**TEMPOFIX 3
+ TEMPOFLUX 3 / TEMPOMATIC**

NT 564KIT
Indice C

- | | |
|-------------------------------------------------------------------------------------------------|-------------------------------------------------------------------------------------|
| FR <i>Bâti-support WC autoportant avec système de chasse d'eau</i> | NL <i>Voorwandsysteem voor hangtoilet met spoeling</i> |
| EN <i>Frame system for wall-hung WC pan with flush valve</i> | ES <i>Bastidor para inodoro suspendido con fluxor de descarga</i> |
| DE <i>Installationssystem für wandhängendes WC-Becken mit Druckspüler</i> | PT <i>Estrutura de suporte para sanita suspensa com torneira de descarga</i> |
| PL <i>Stelaż do podwieszanej miski ustępowej z zaworem do splukiwania bezpośredniego</i> | RU <i>Опорная рама для подвешного унитаза с краном прямого слива</i> |



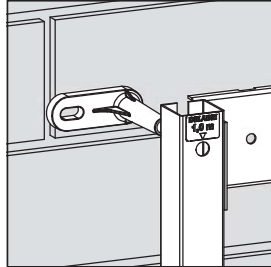
- | | |
|----------------------------------------------------------------------------------------------------------------|---------------------------------------------------------------------------------------|
| FR Purger soigneusement les canalisations avant la pose et la mise en service du produit. |  |
| EN Thoroughly flush the pipes to remove any impurities before installing and commissioning the product. | |
| DE Vor Montage und Inbetriebnahme des Produkts die Anschlussleitungen regelkonform spülen. | |
| PL Dokładnie wypłukać instalację przed montażem i uruchomieniem produktu. | |
| NL Spoel zorgvuldig de leidingen alvorens tot installatie of ingebruikname van de kraan over te gaan. | |
| ES Purgar cuidadosamente las tuberías antes de la instalación y de la utilización del producto. | |
| PT Purgar cuidadosamente as canalizações antes da instalação e utilização do produto. | |
| RU Перед установкой и подключением устройства тщательно промыть канализационные трубы напором воды. | |



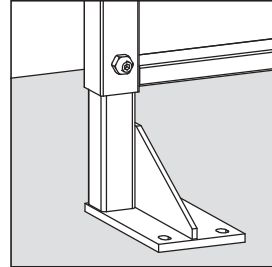
1



Kit 1 TEMPOFIX 3
564000 / 564060 - P. 2



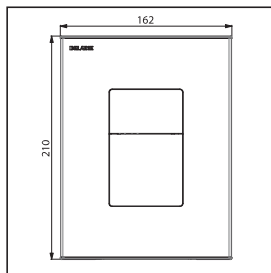
Kit 1 TEMPOFIX 3
564005 / 564065 - P. 4



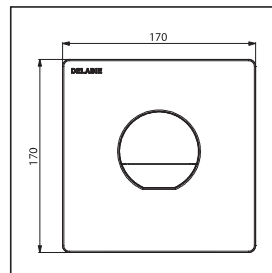
2



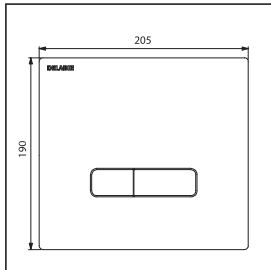
Kit 2 TEMPOFLUX 3
763000 - P. 13&16



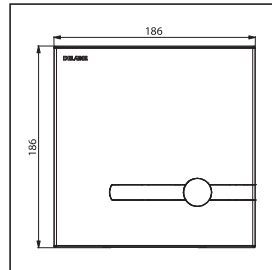
Kit 2 TEMPOFLUX 3
763040-763041 - P. 13&19



Kit 2 TEMPOFLUX 3
763030 - P. 13&23



Kit 2 TEMPOMATIC
464000-464006 - P. 13&26



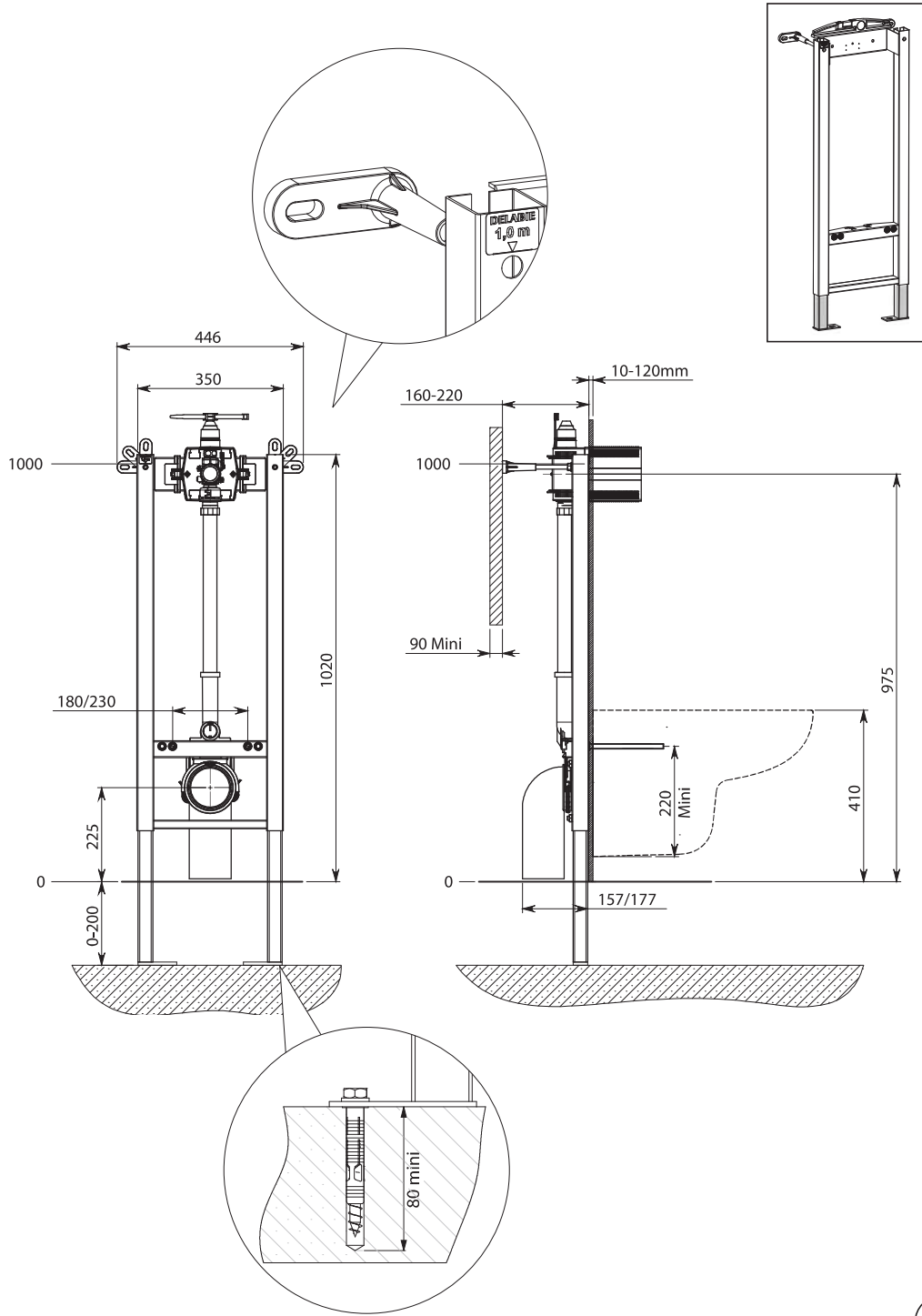
763000 - P. 31
763040-763041 - P. 32
763030 - P. 33
464000-464006 - P. 34

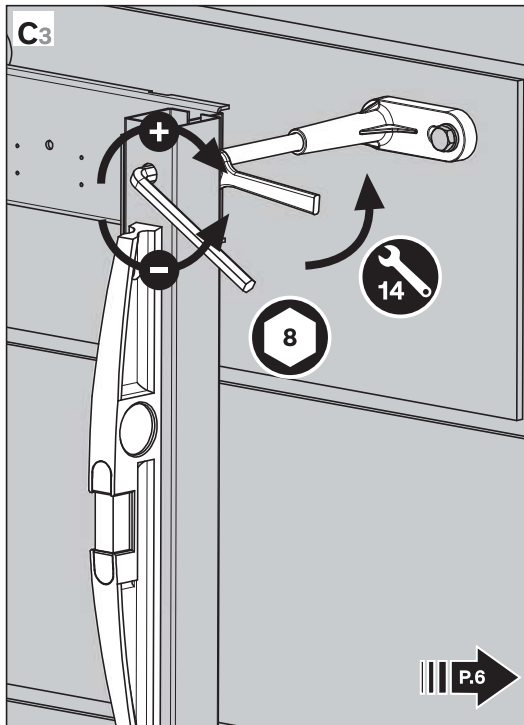
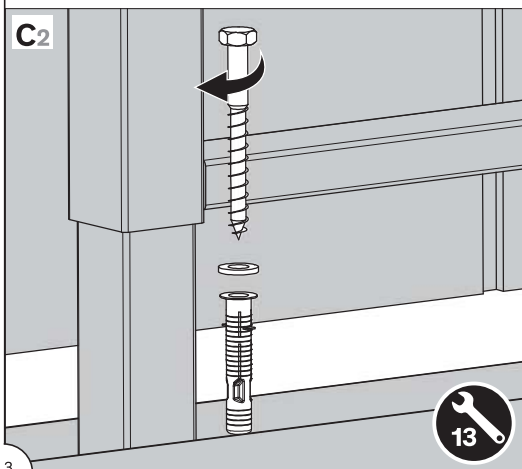
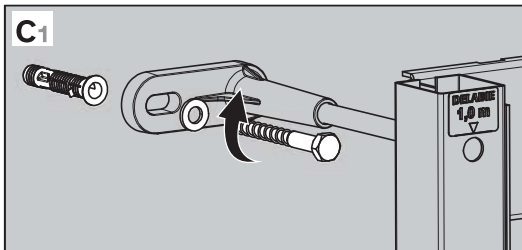
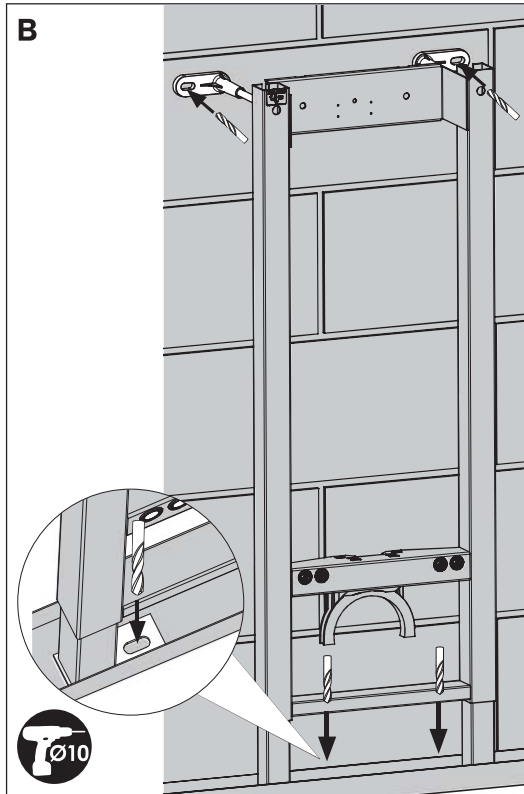
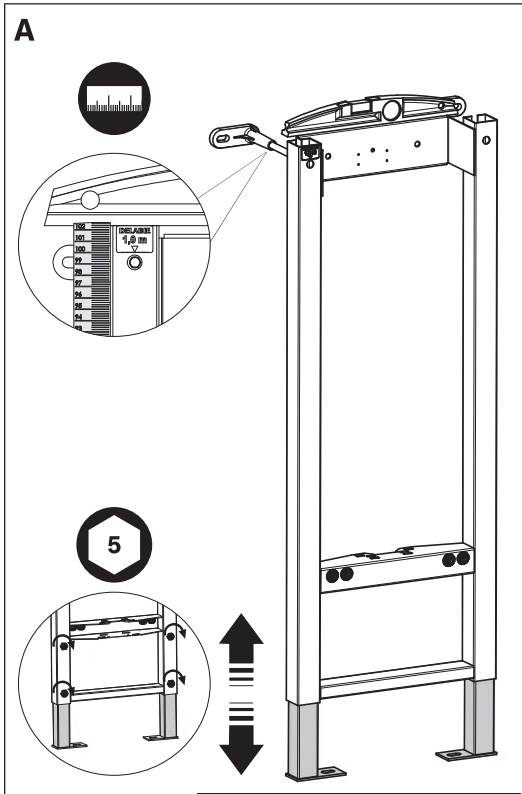
3



1

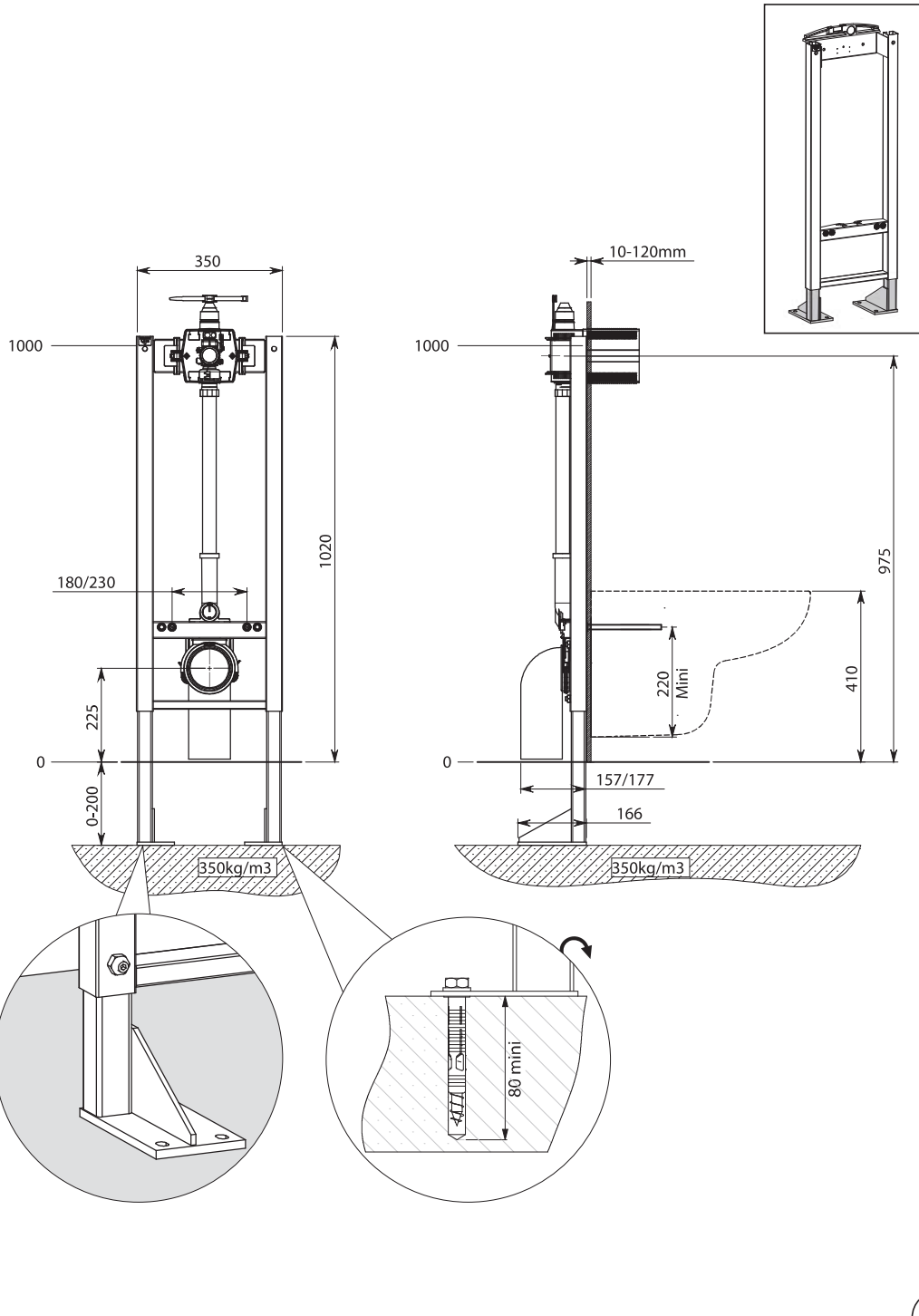
Kit 1 : 564000 (BE/DE) - 564060 (BE/DE)

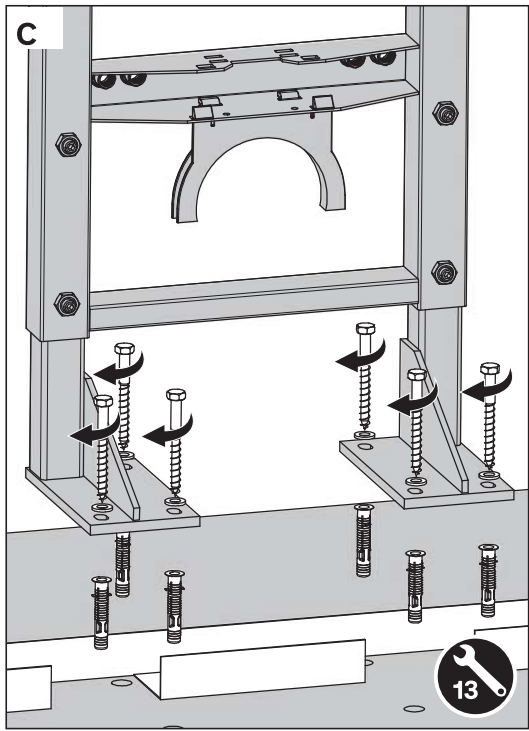
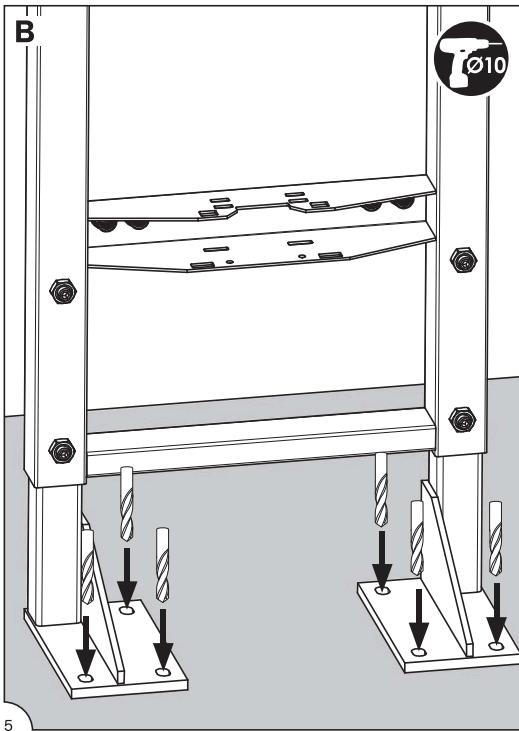
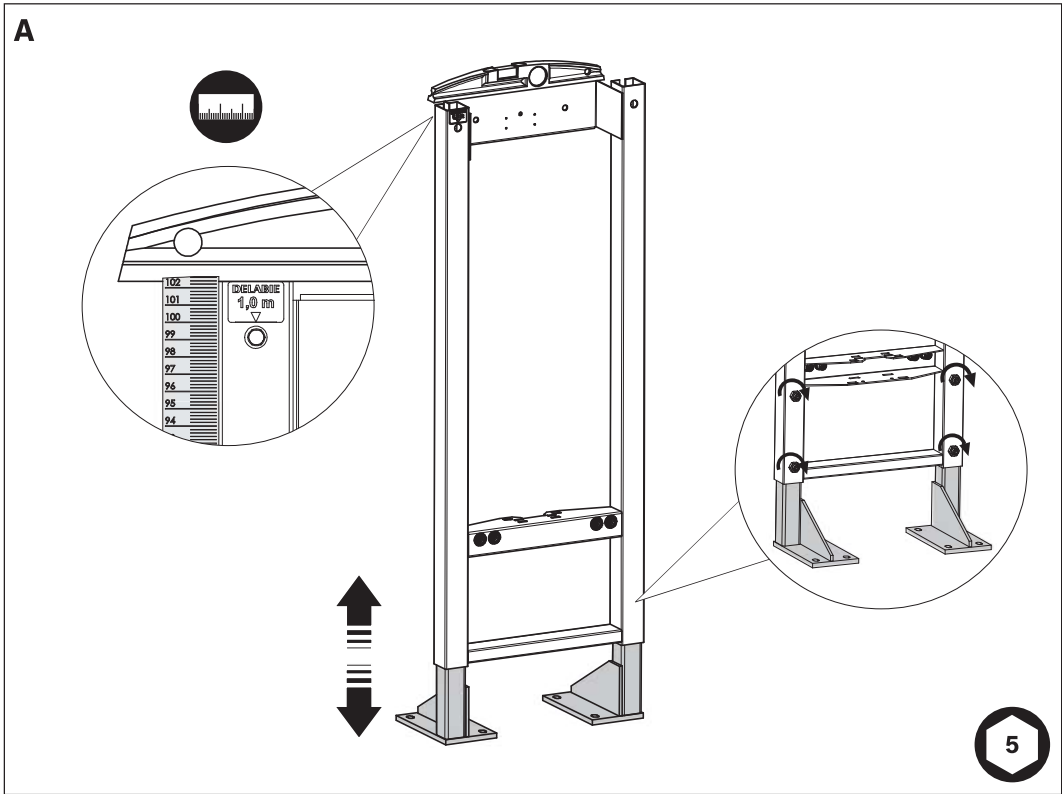




1

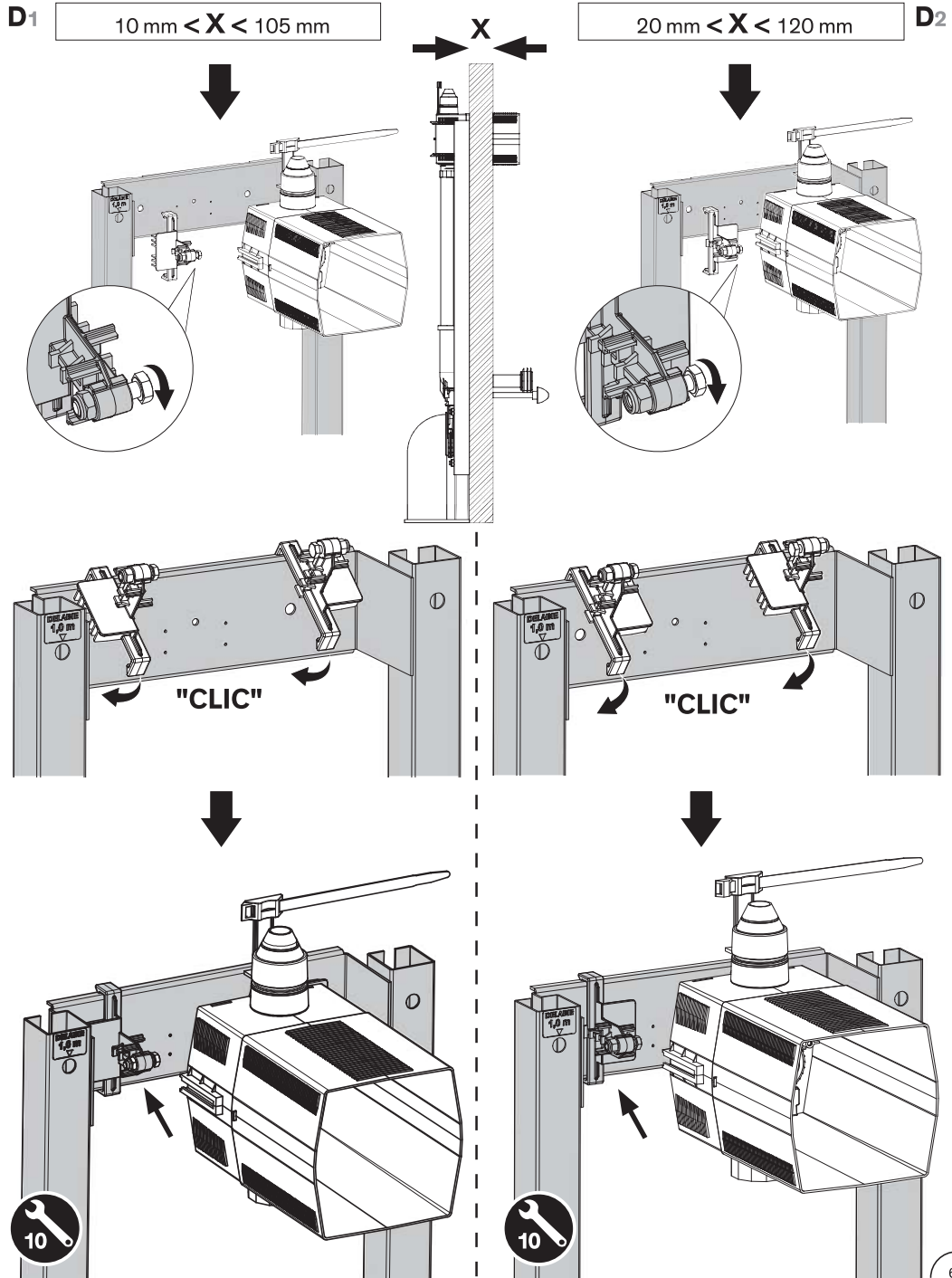
Kit 1 : 564005 (BE/DE) - 564065 (BE/DE)

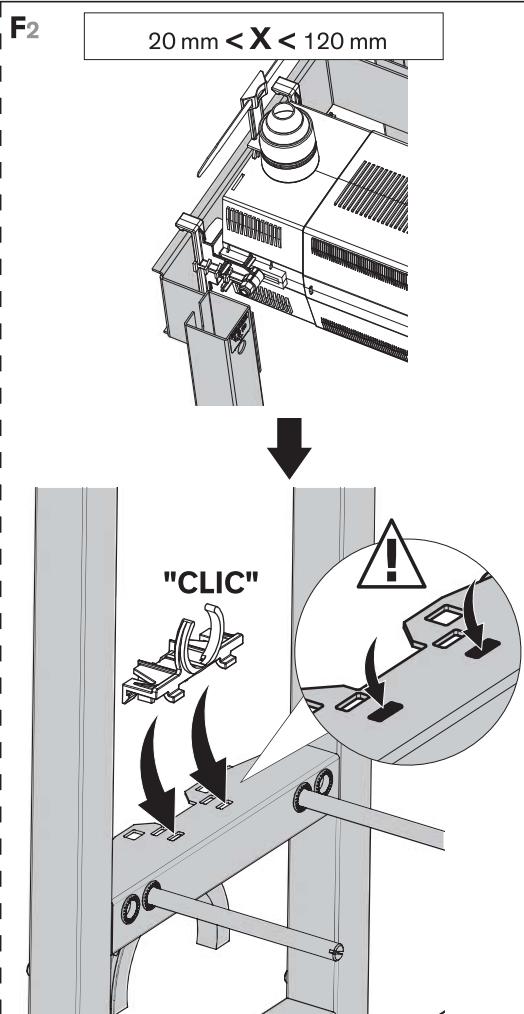
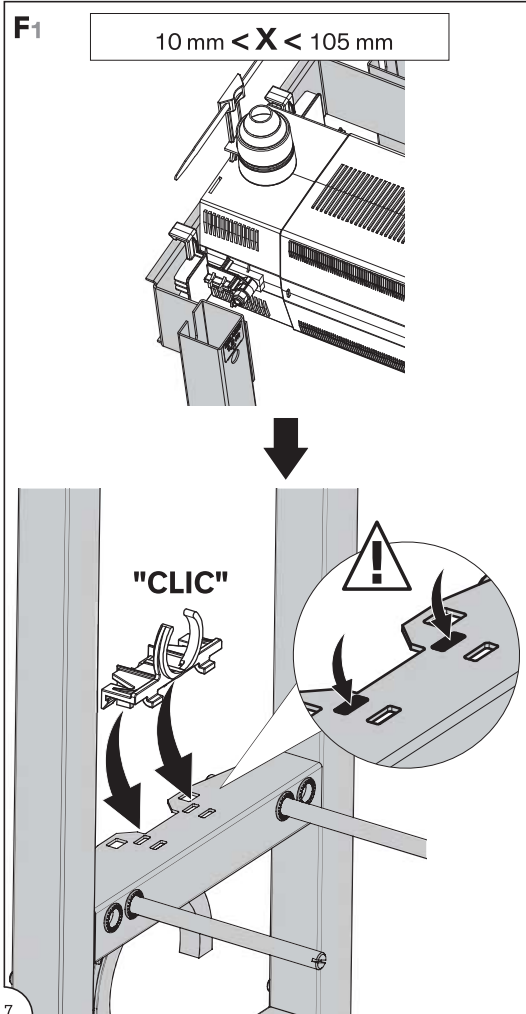
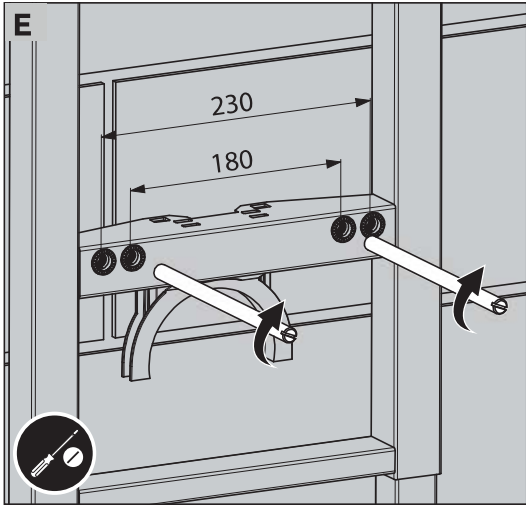


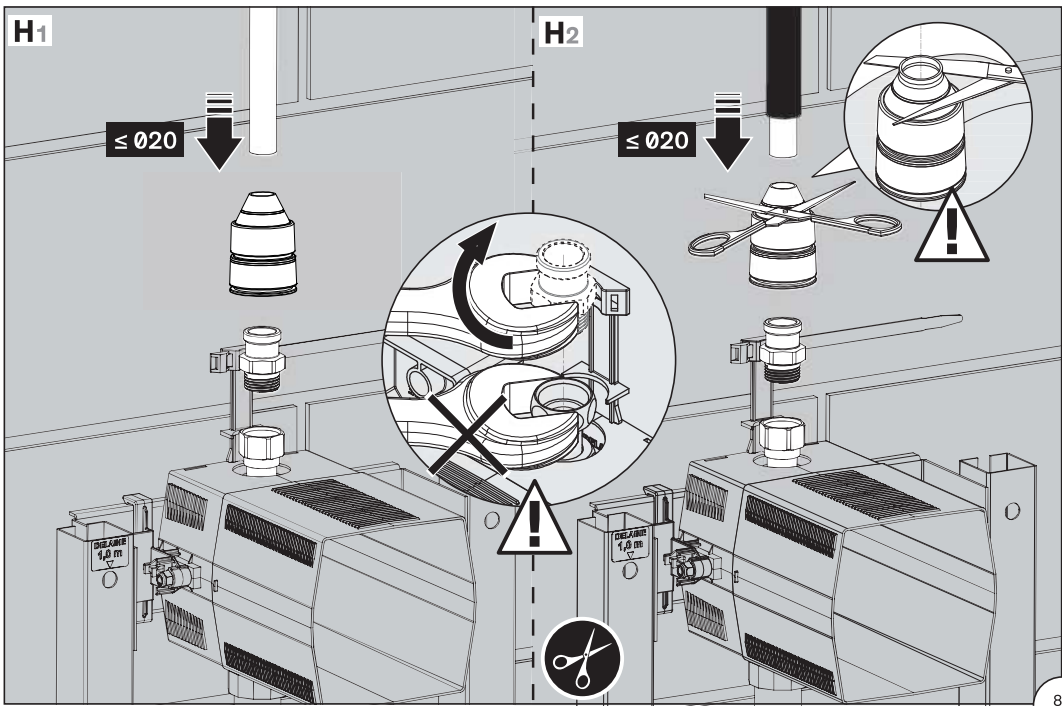
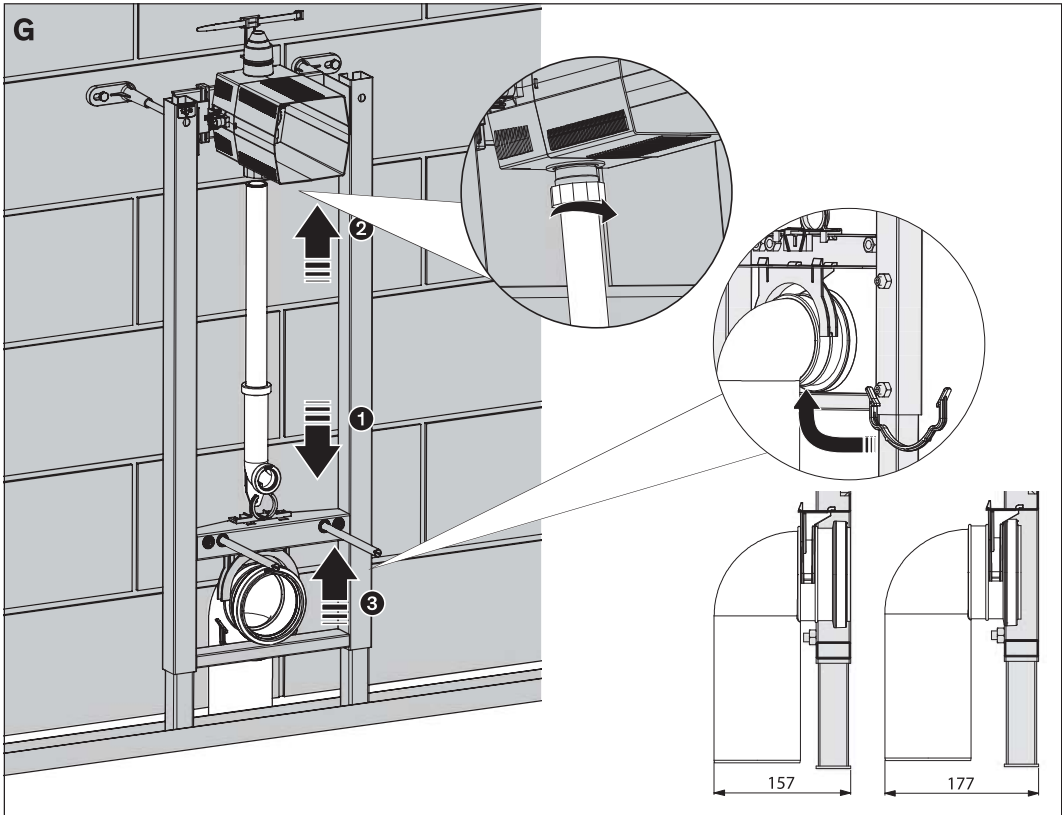


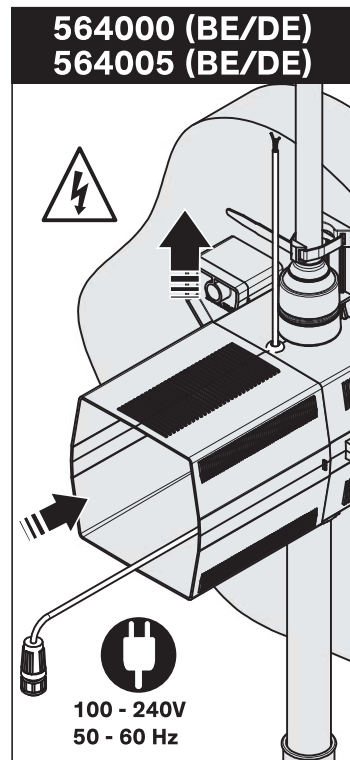
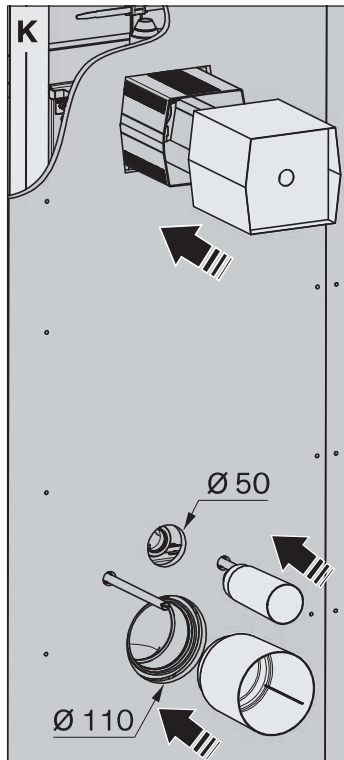
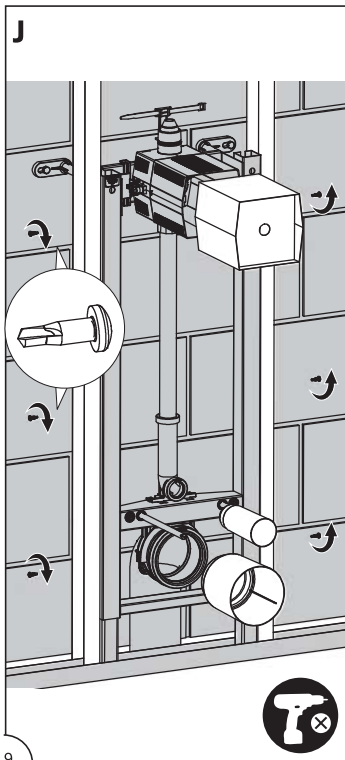
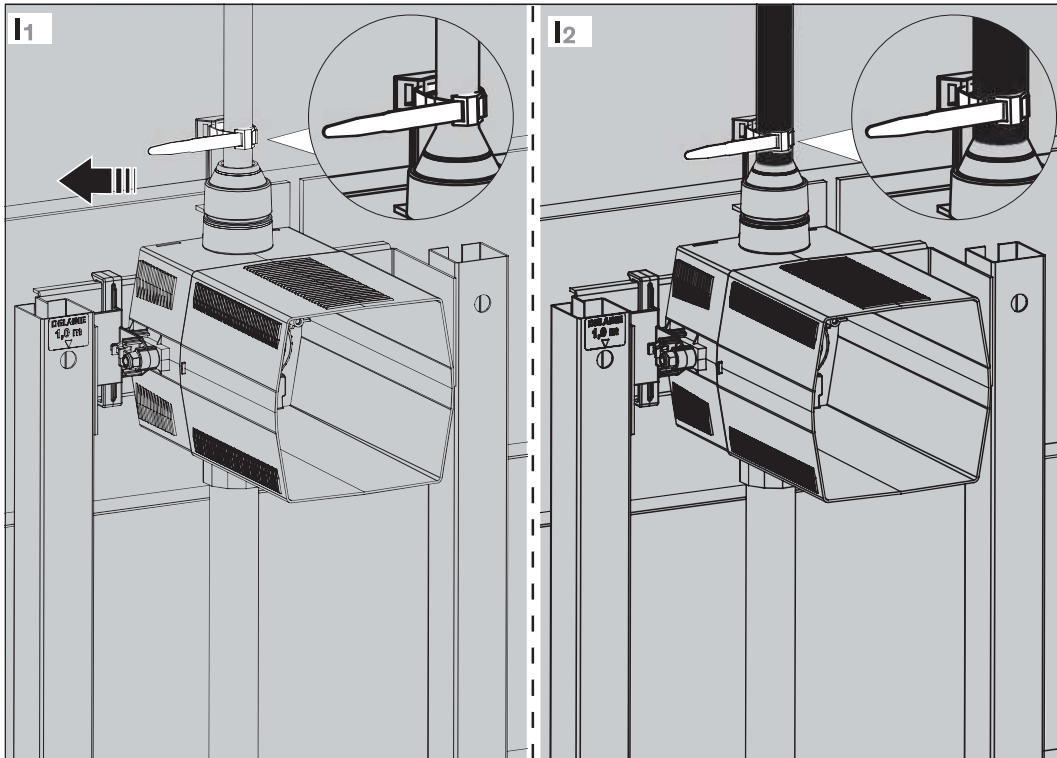
1

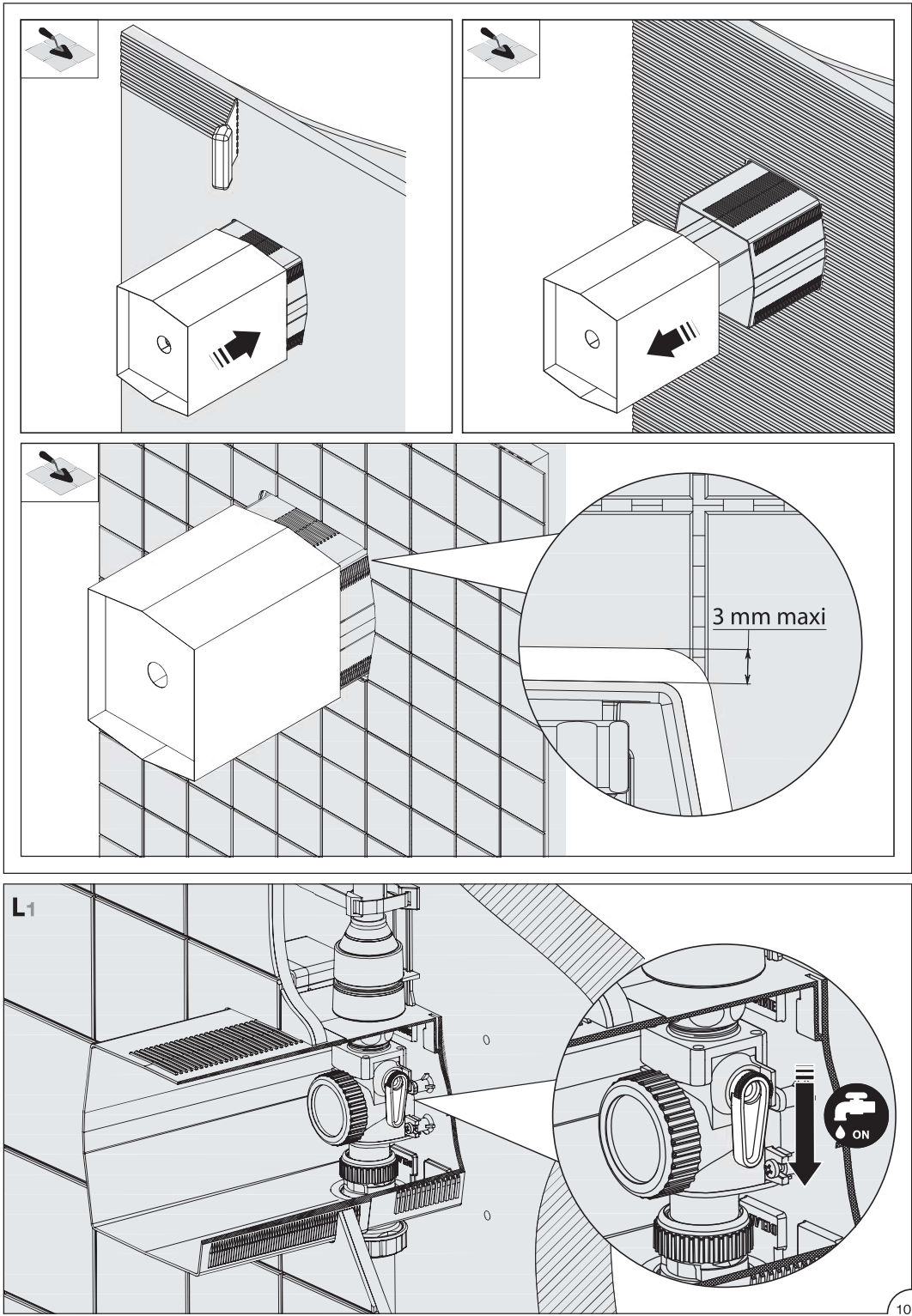
Kit 1 : 564000 (BE/DE) - 564005 (BE/DE)
564060 (BE/DE) - 564065 (BE/DE)

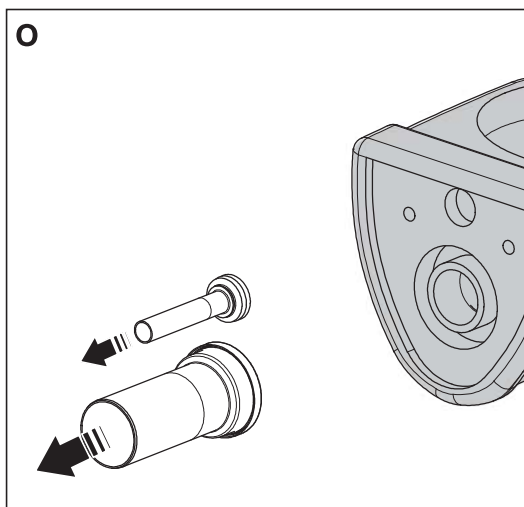
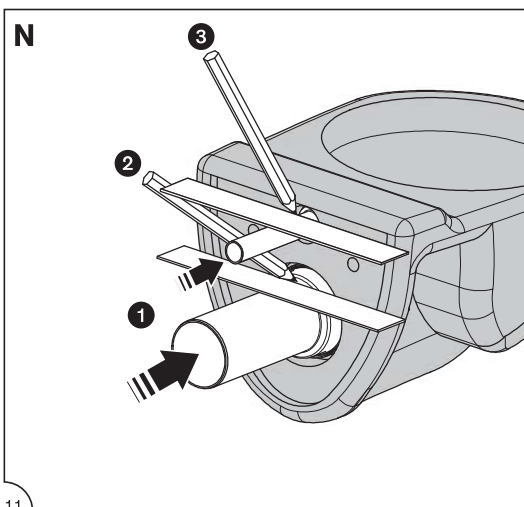
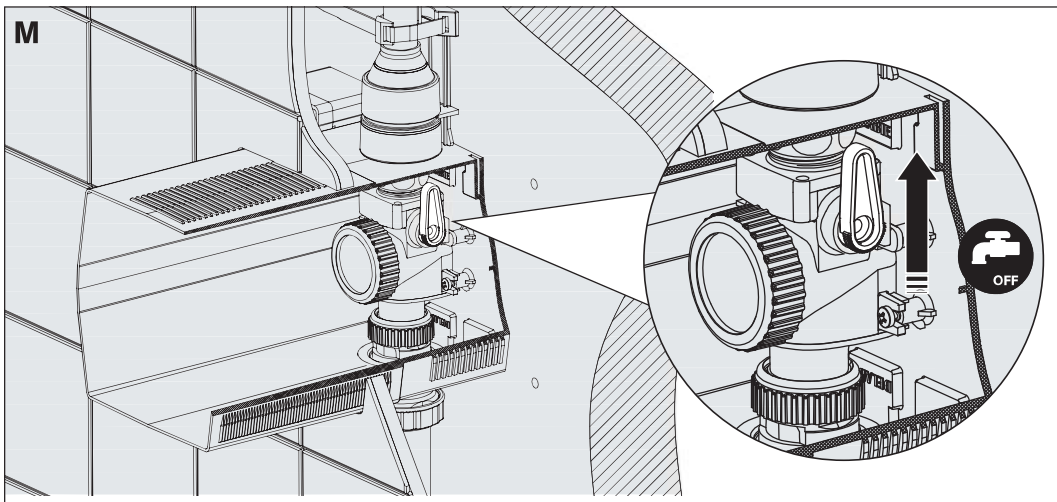
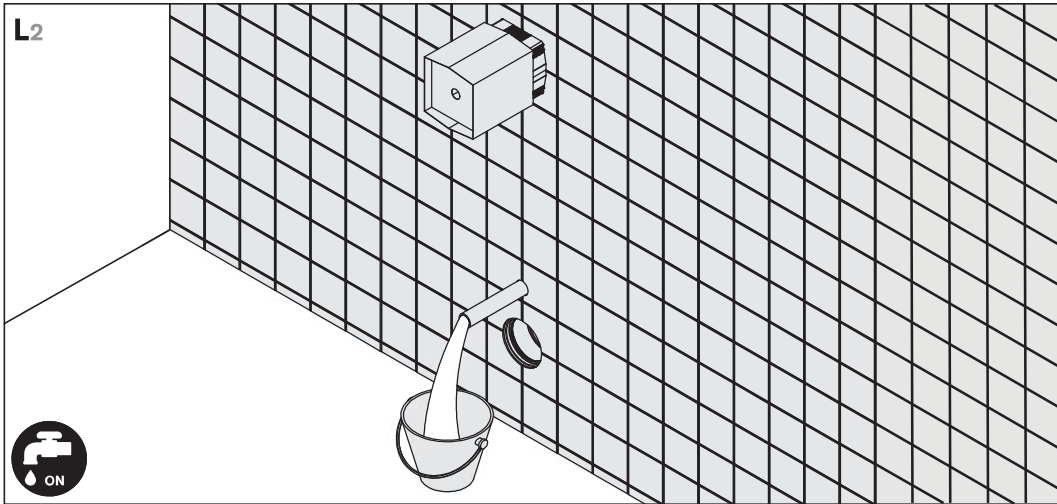


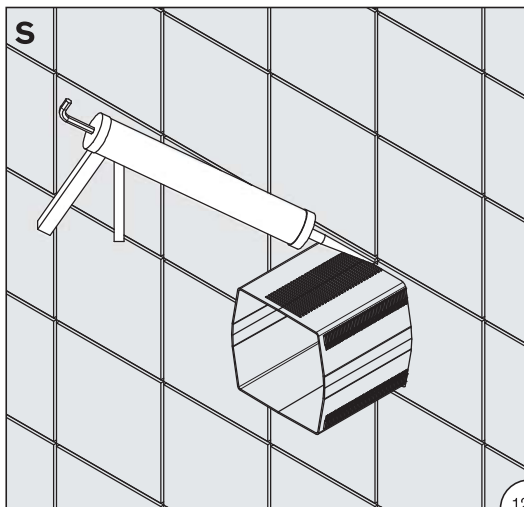
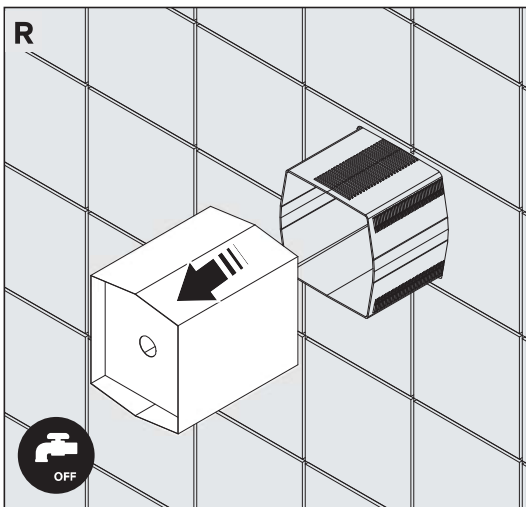
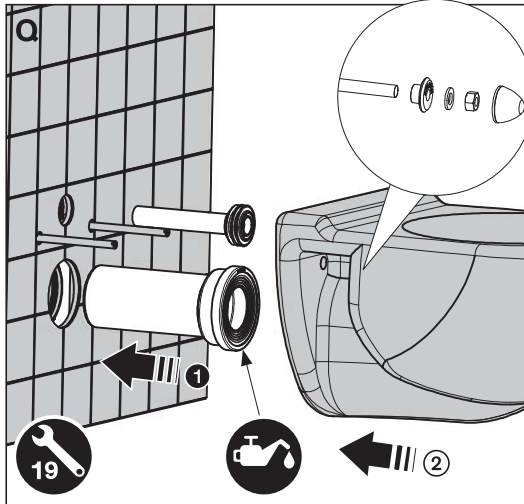
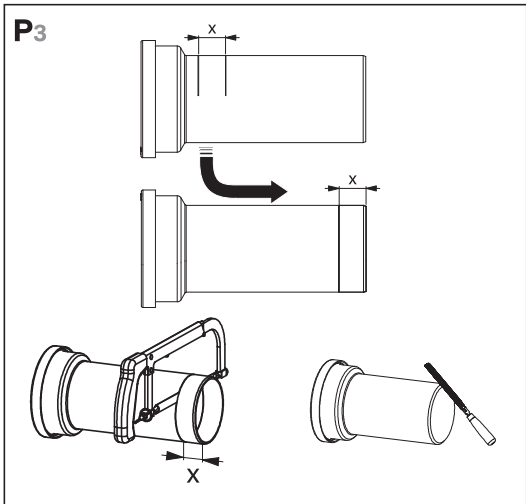
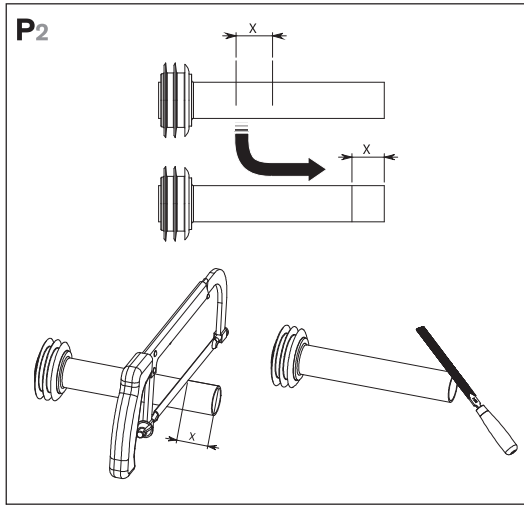
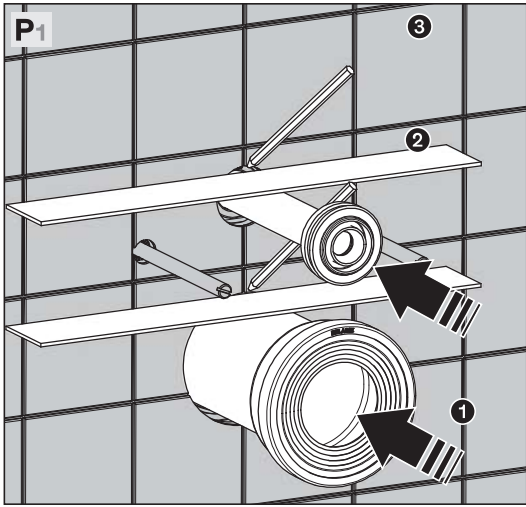






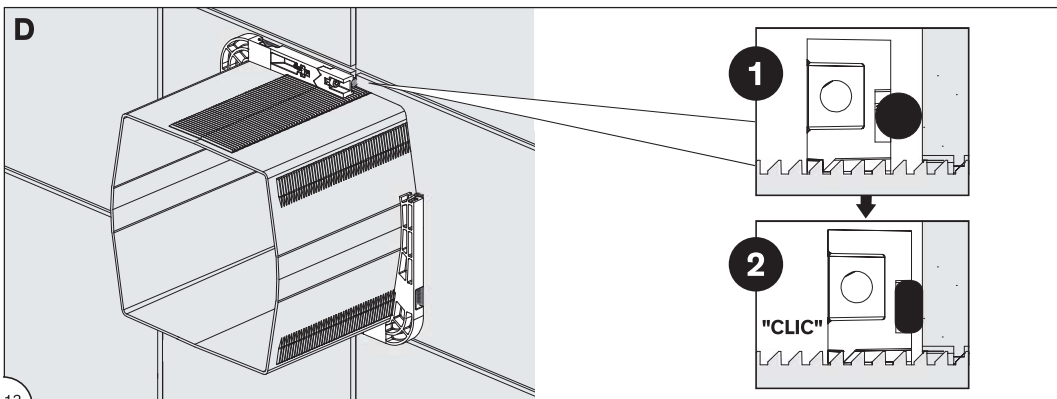
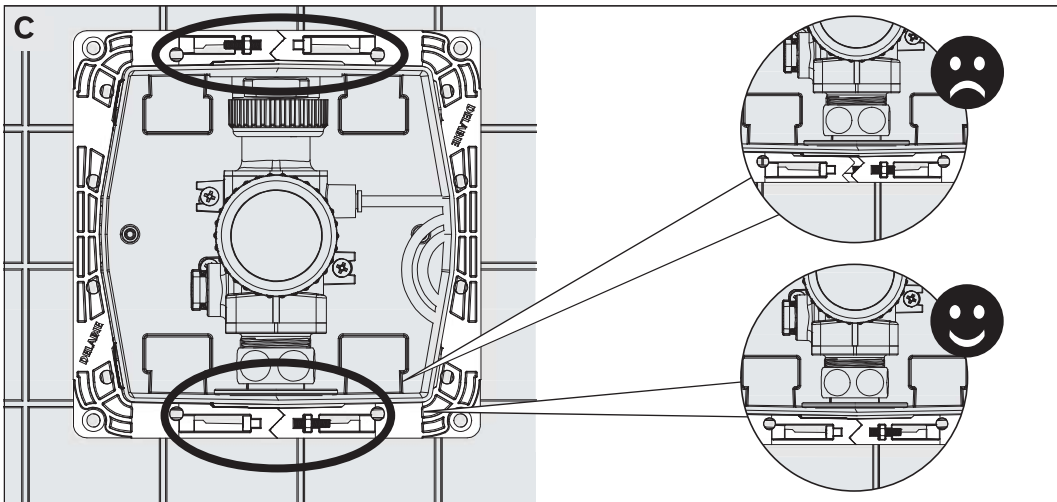
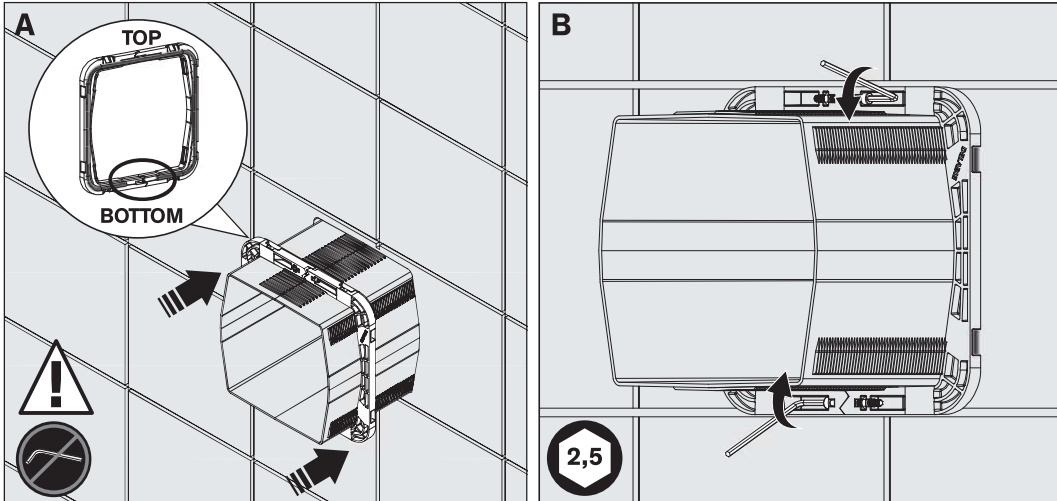


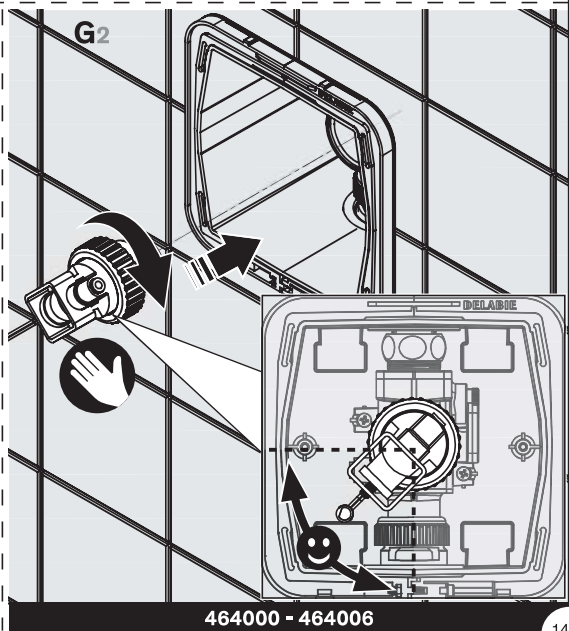
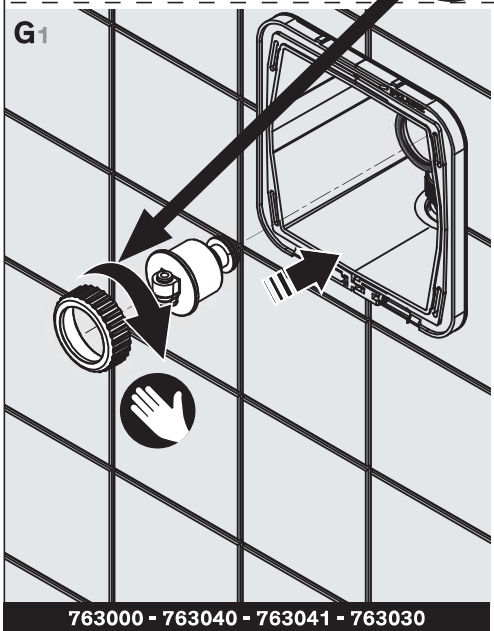
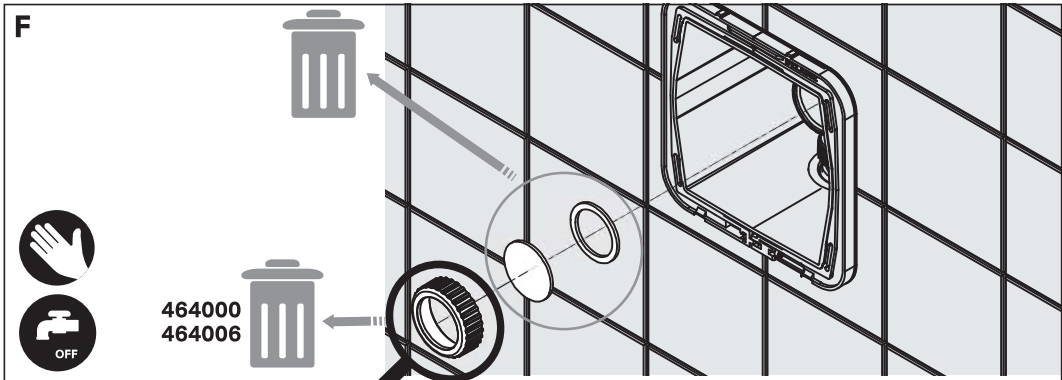
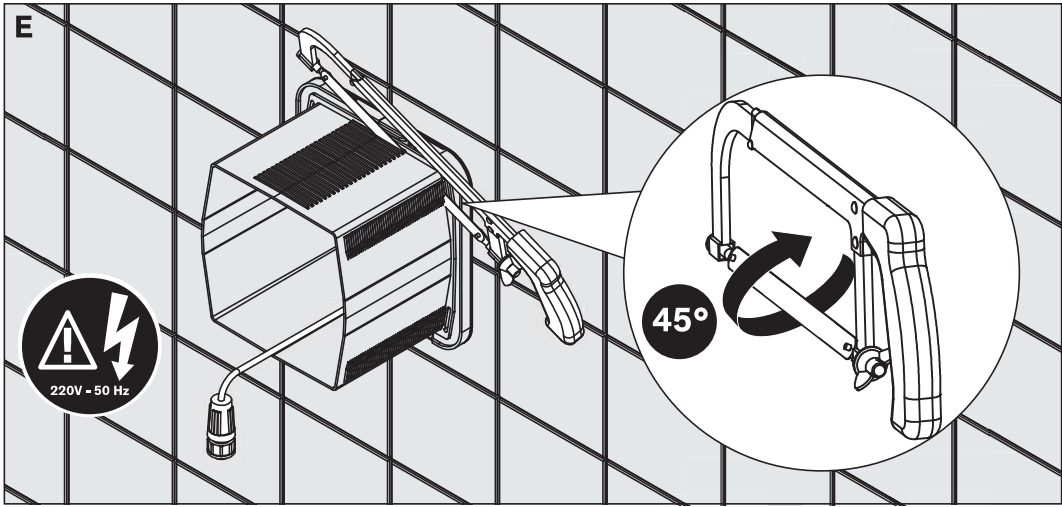




2

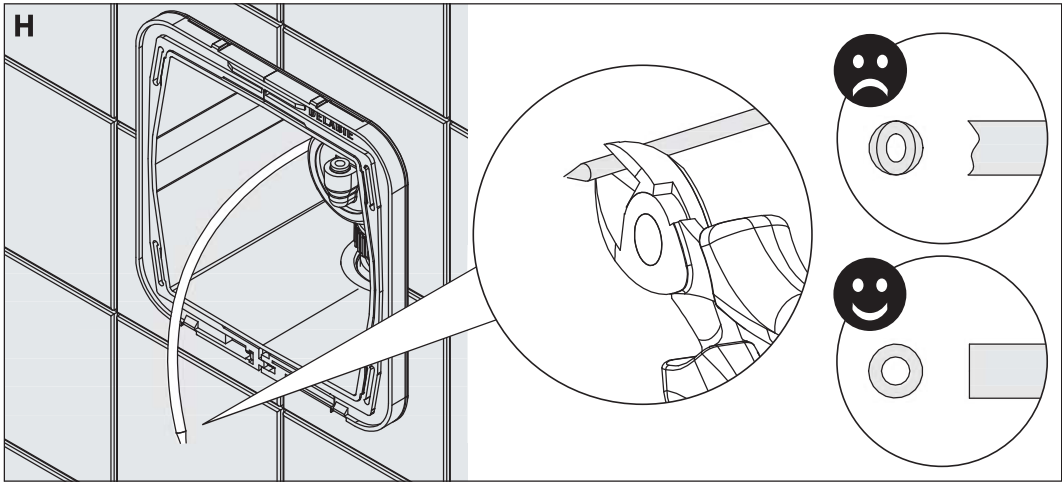
Kit 2 : 763000 - 763040 - 763041 - 763030
464000 - 464006



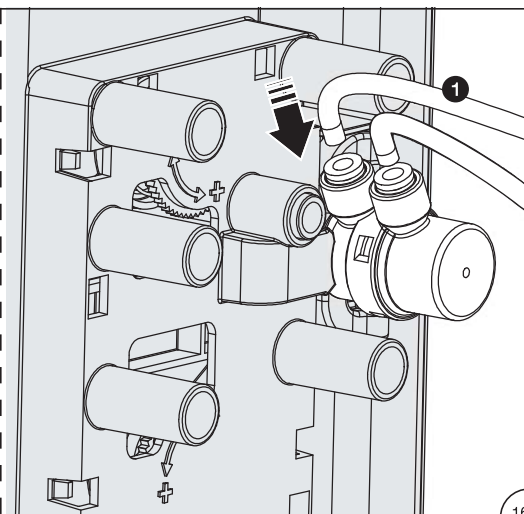
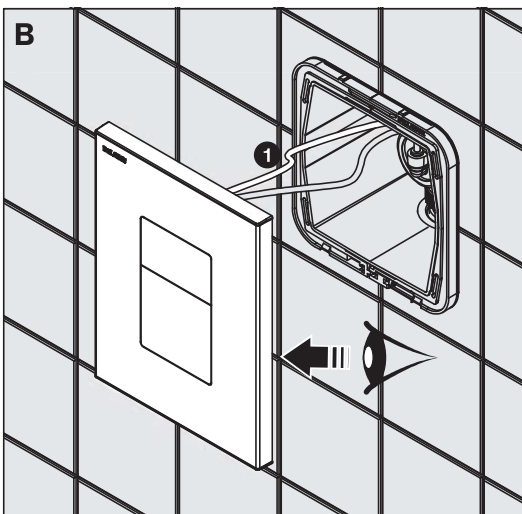
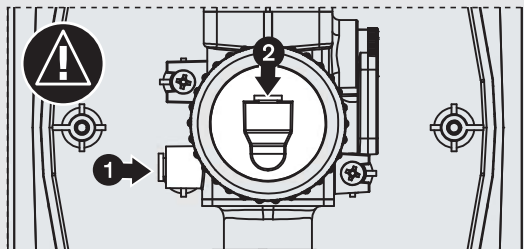
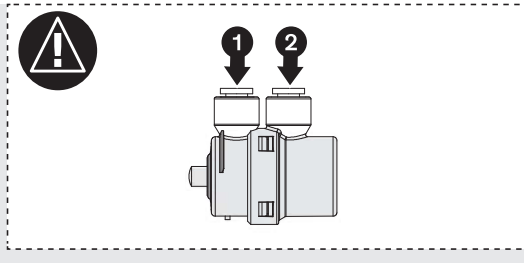
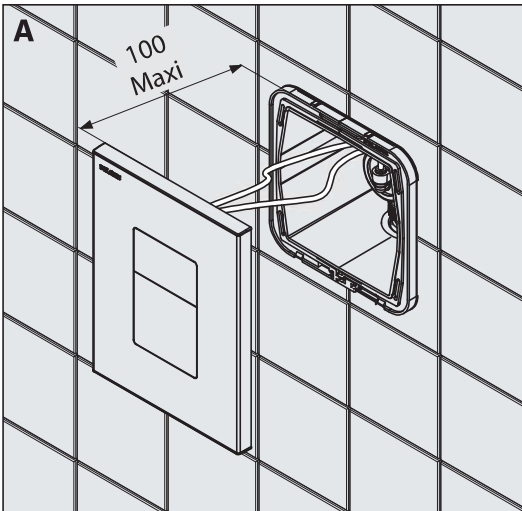
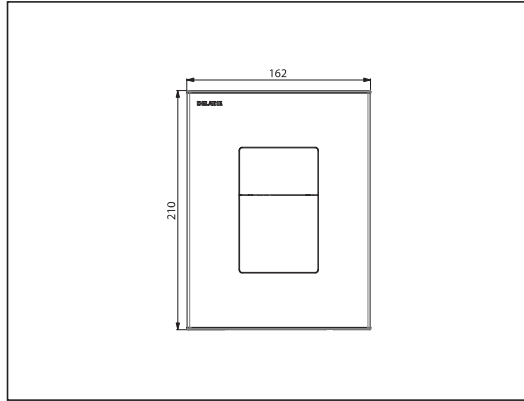
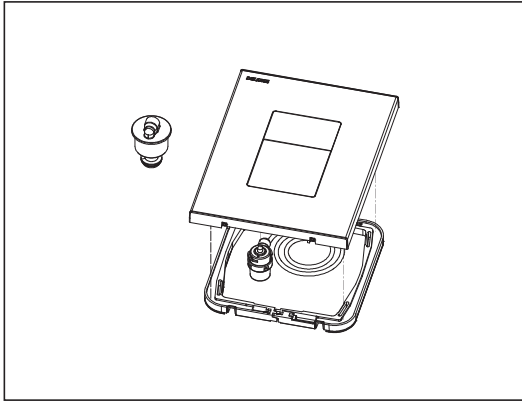


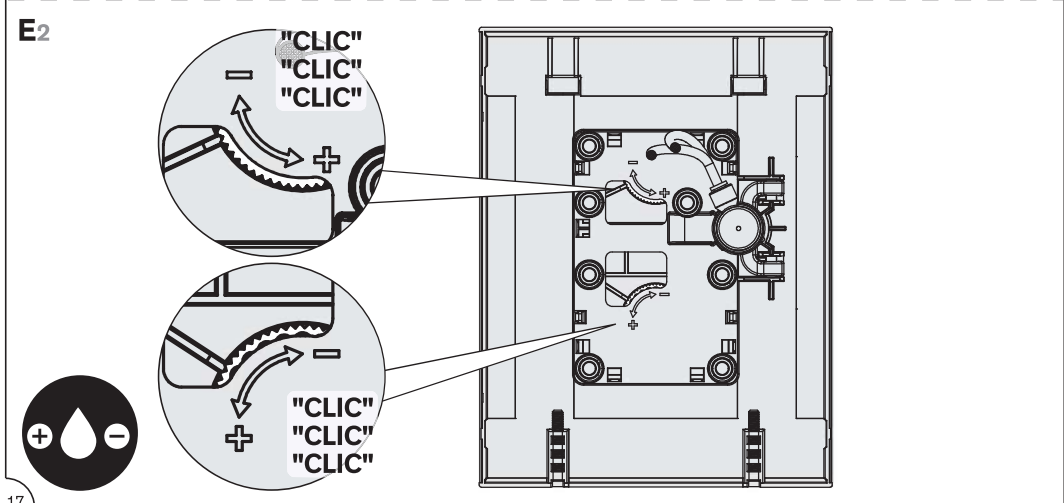
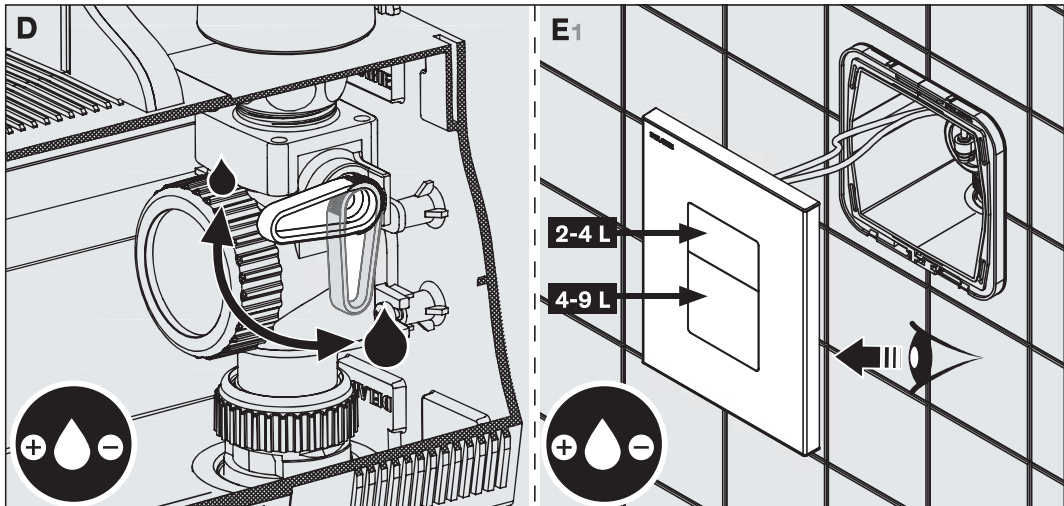
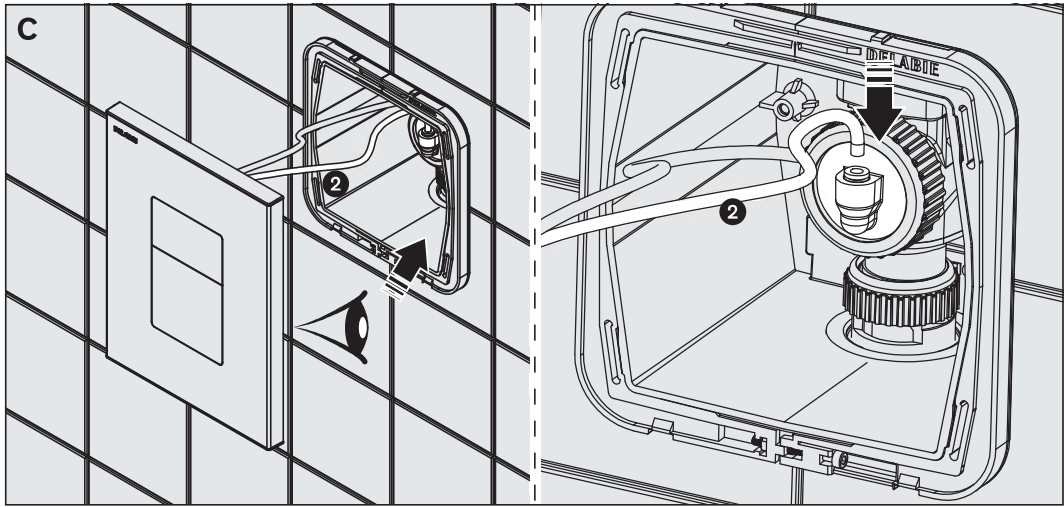
763000 - 763040 - 763041 - 763030

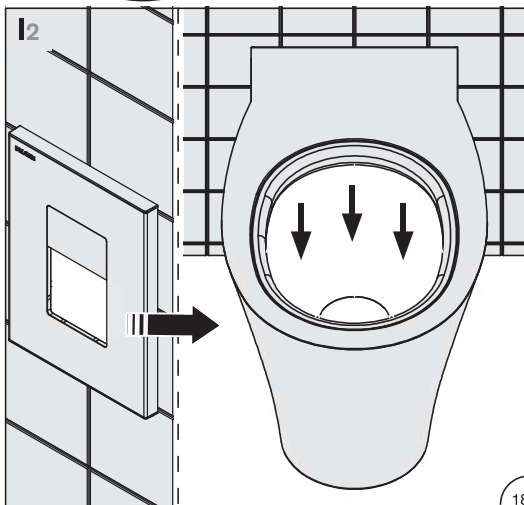
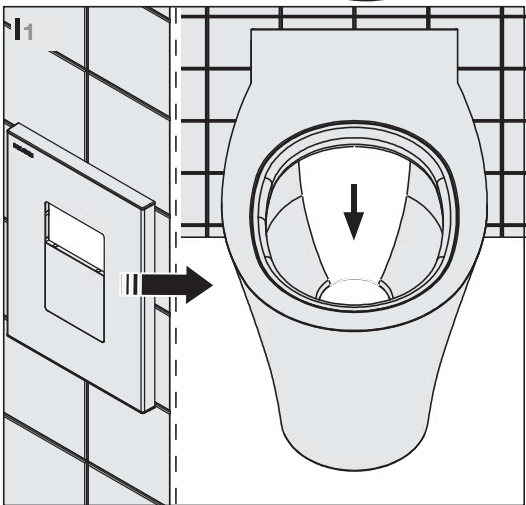
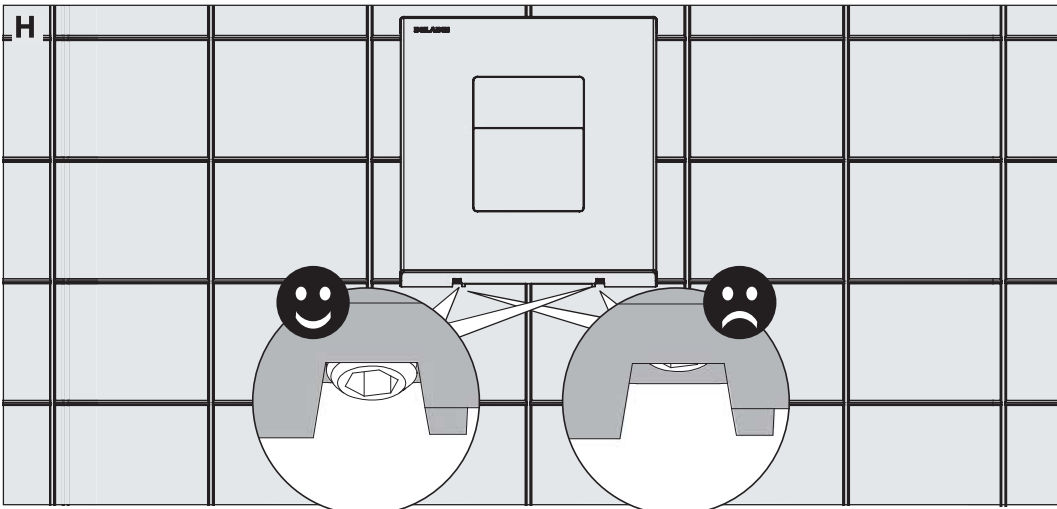
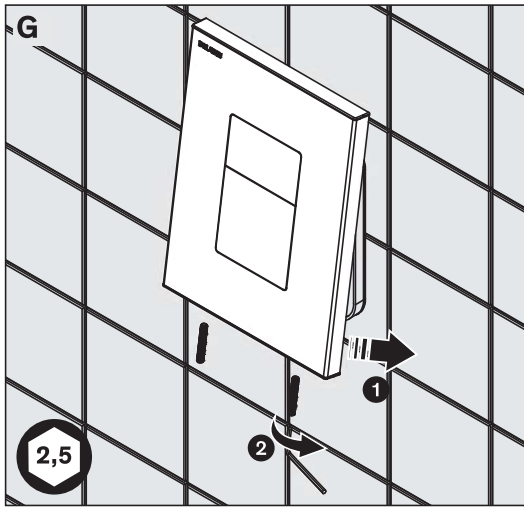
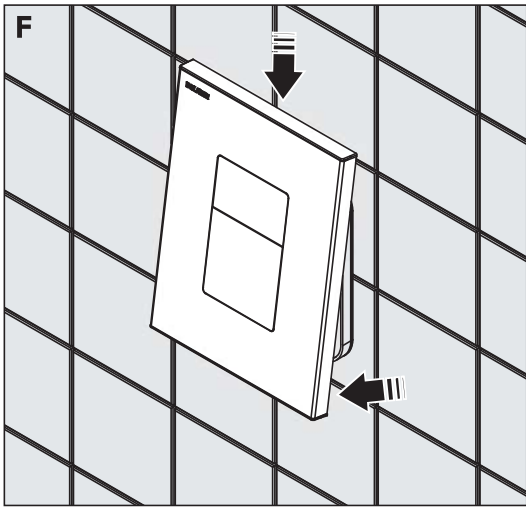
464000 - 464006



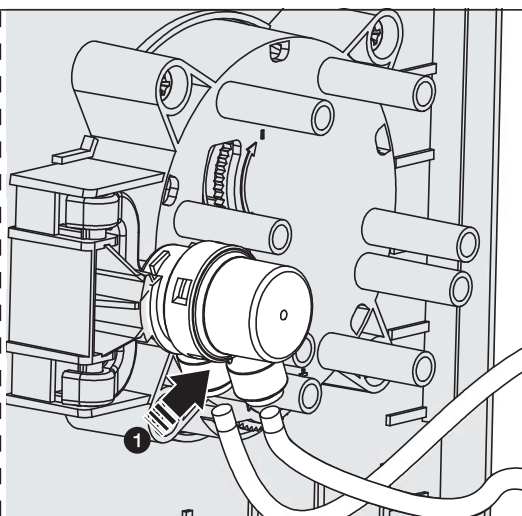
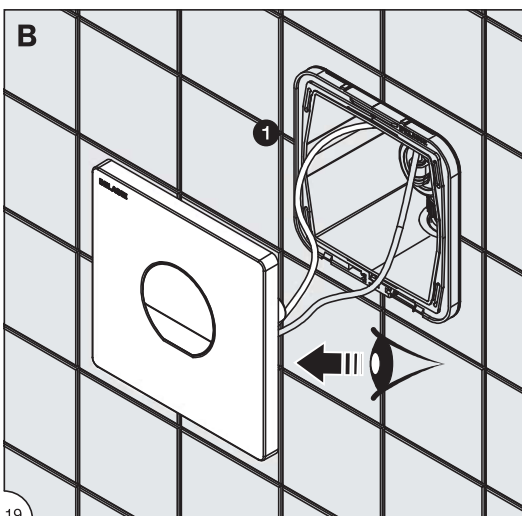
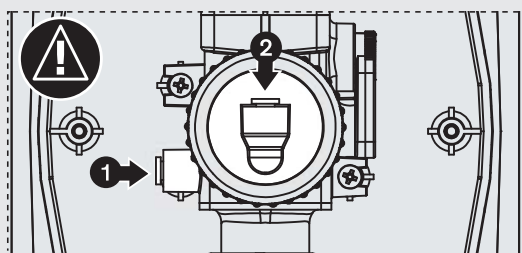
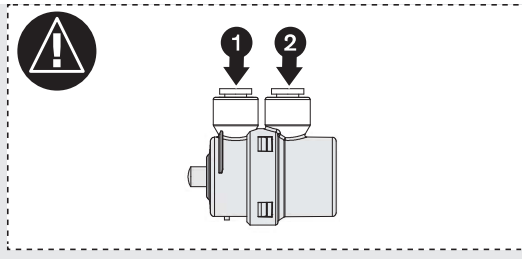
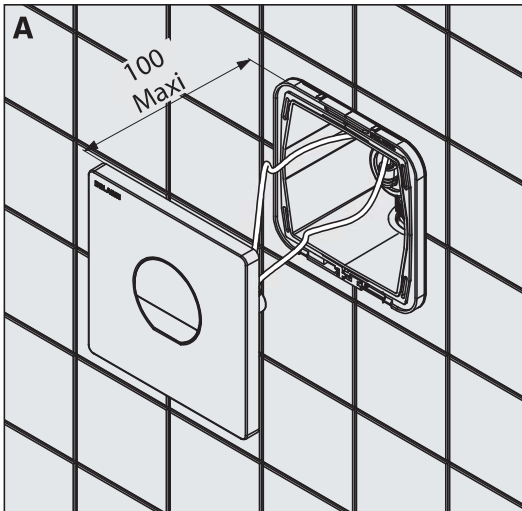
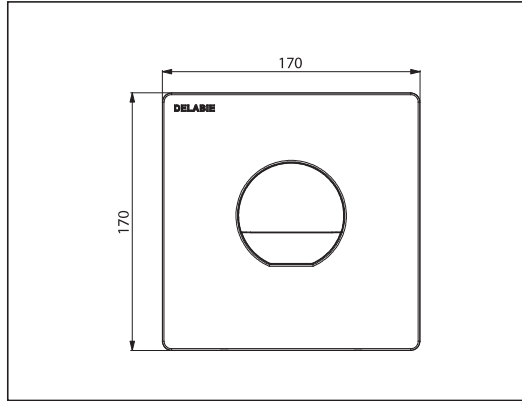
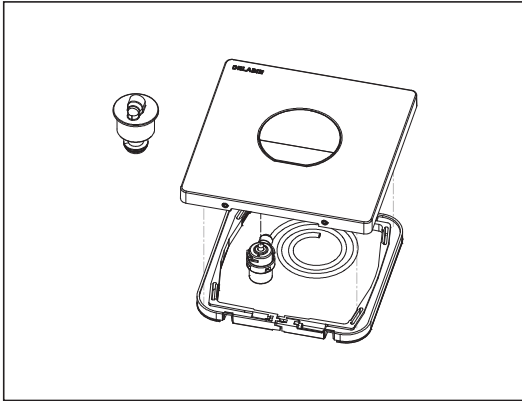
Kit 2 : 763000

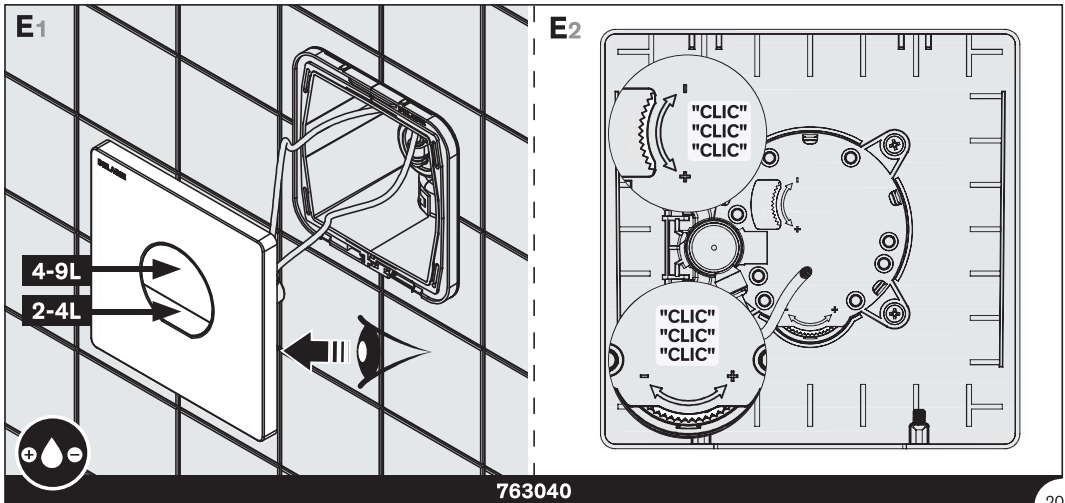
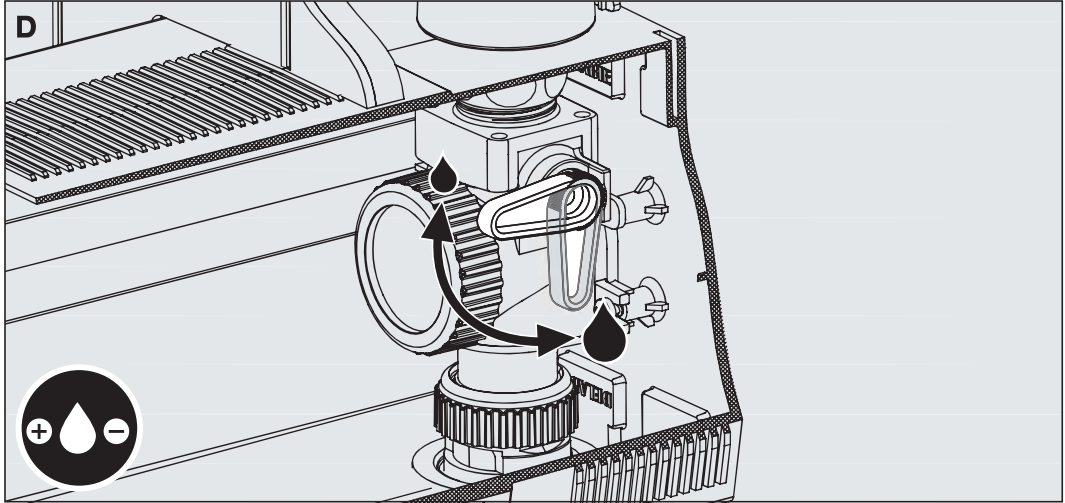
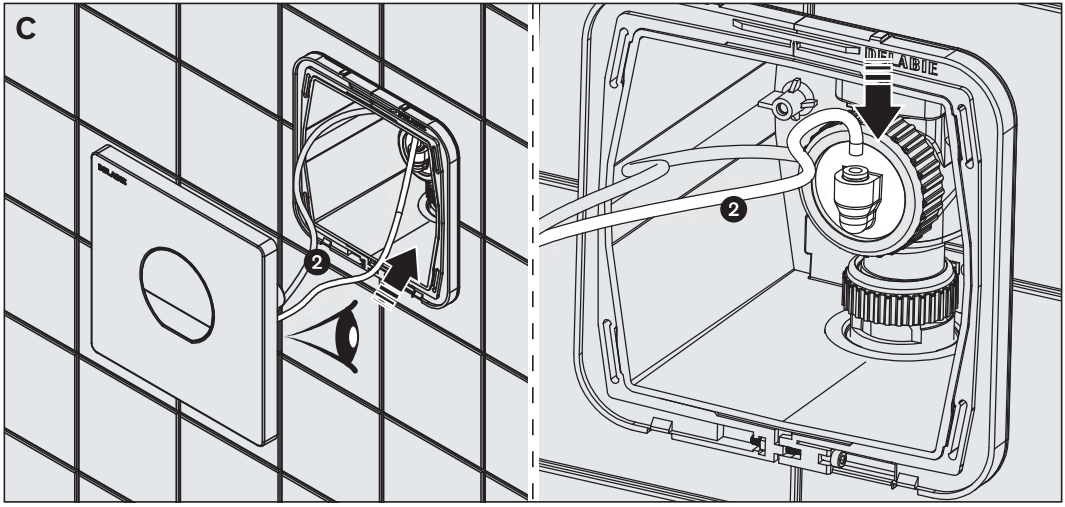


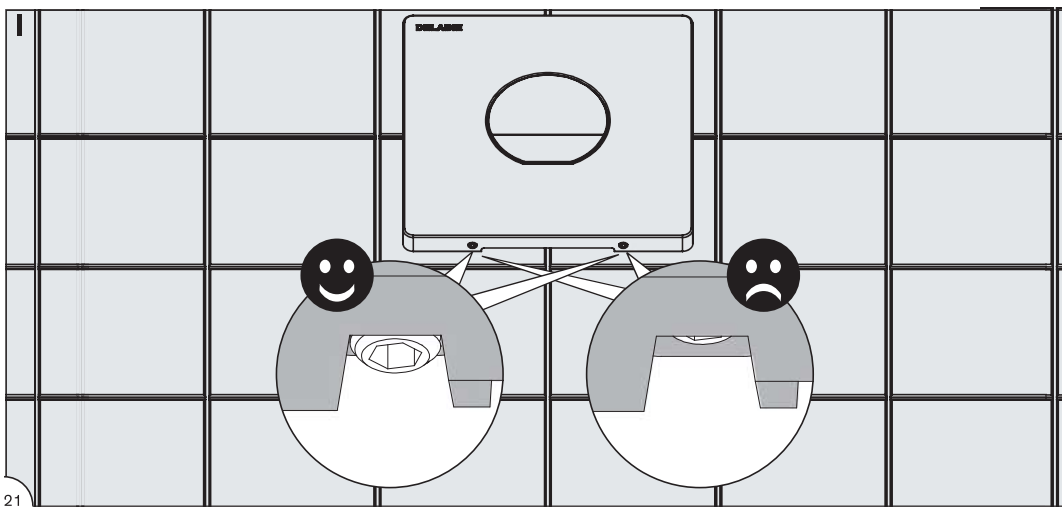
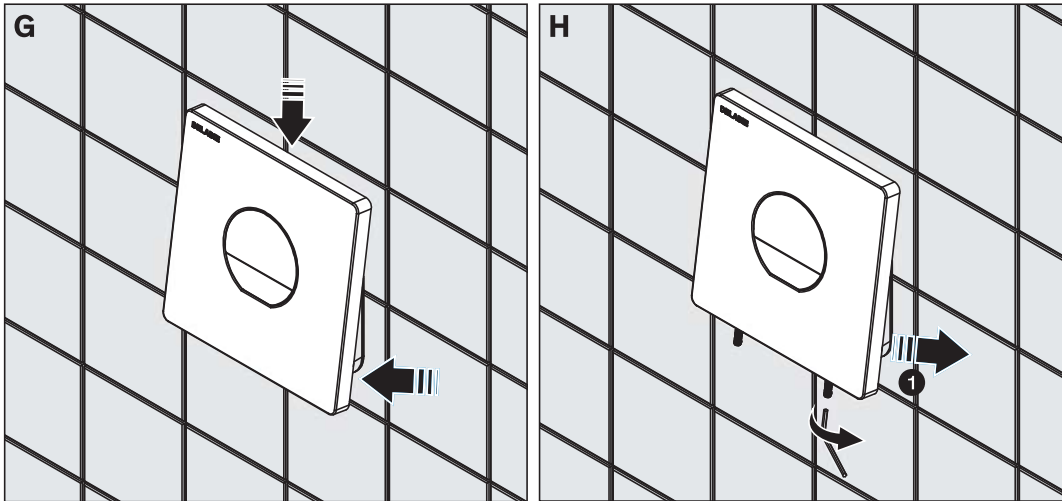
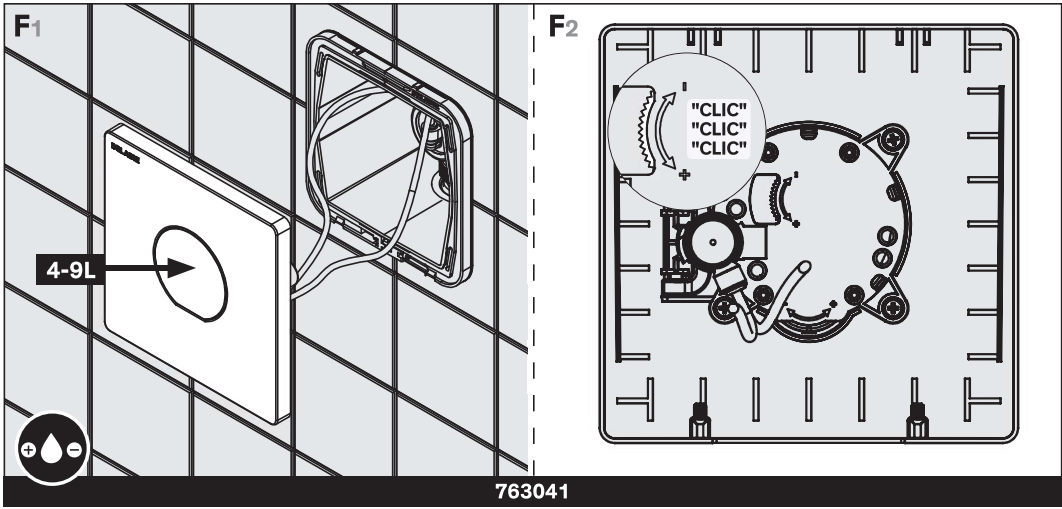


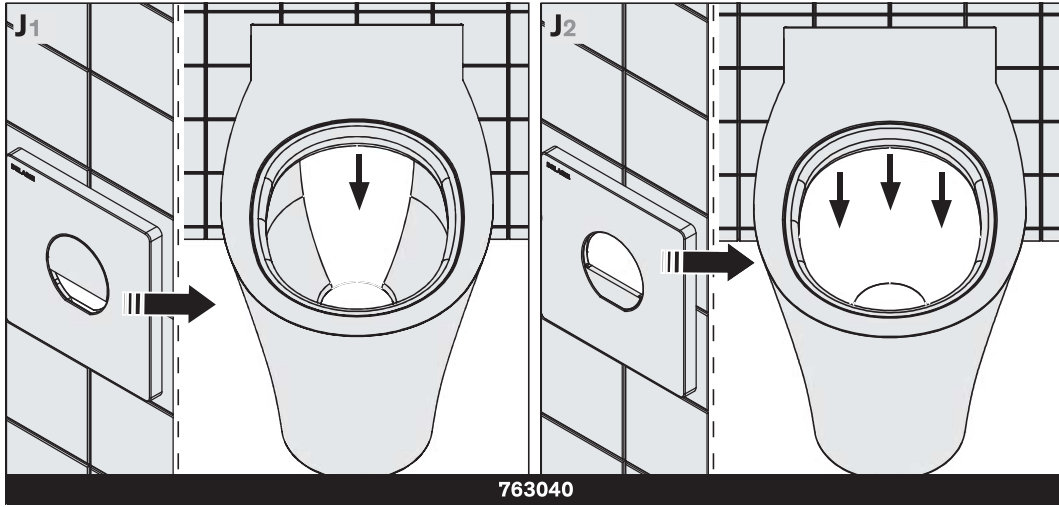


Kit 2 : 763040 - 763041

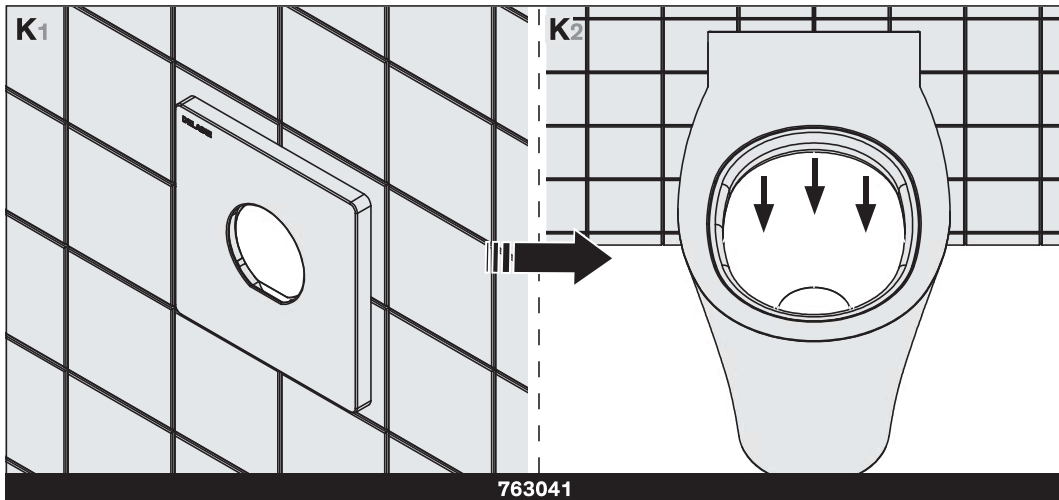






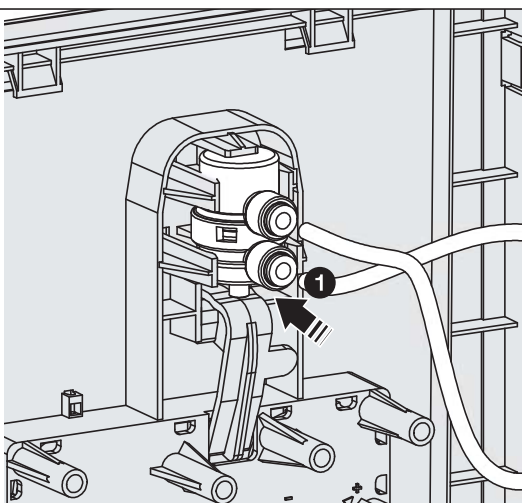
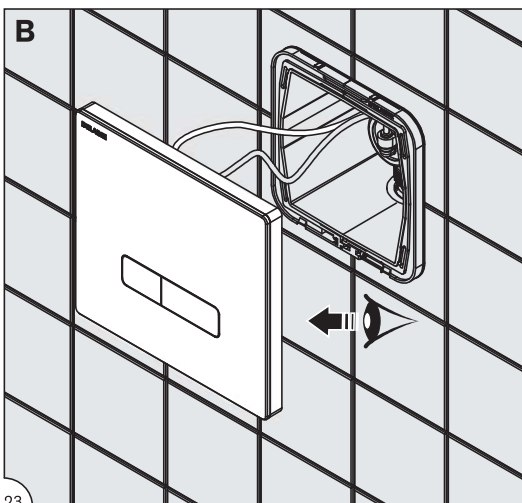
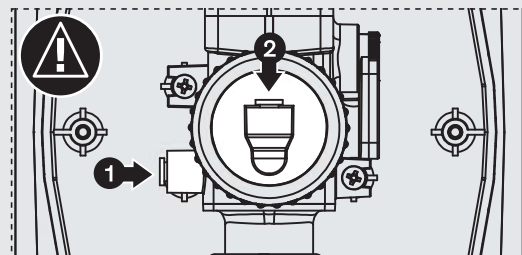
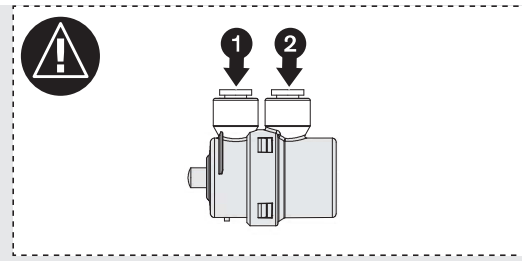
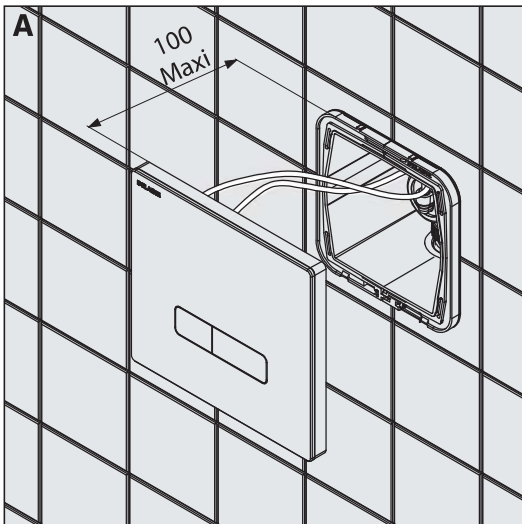
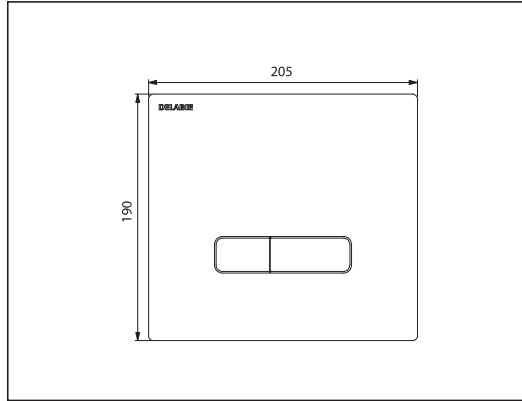
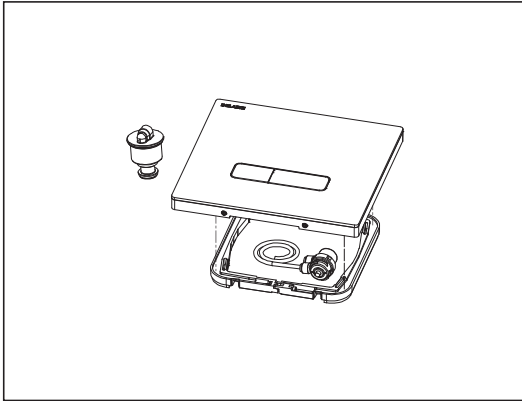


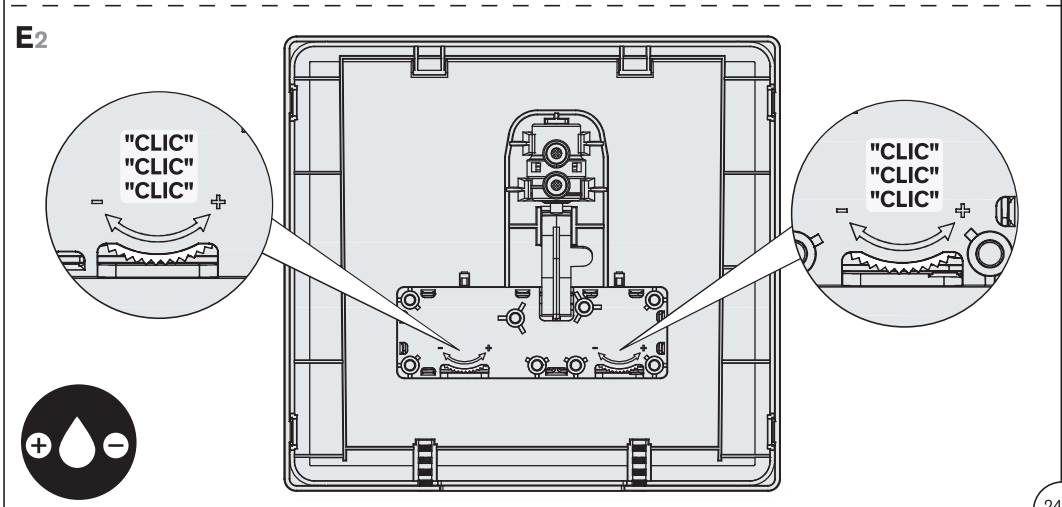
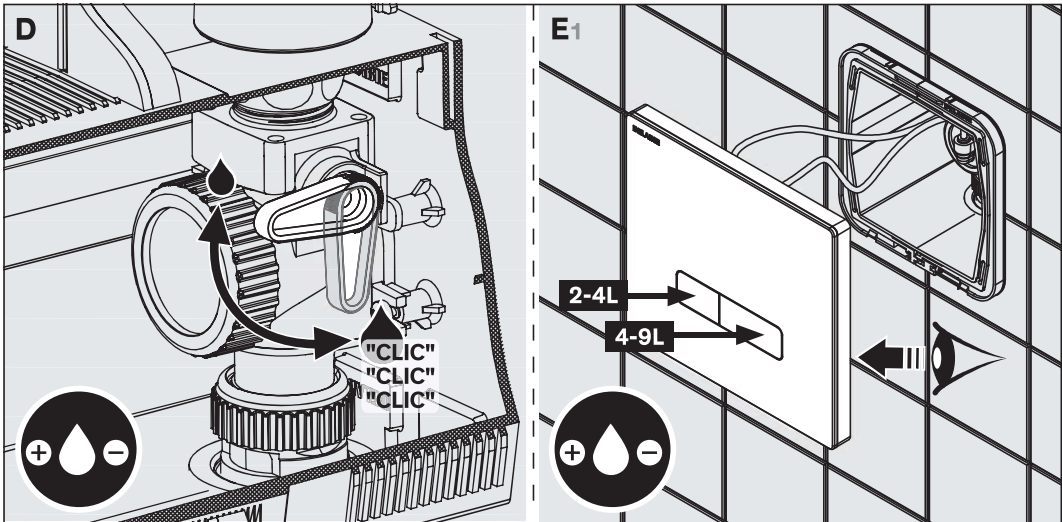
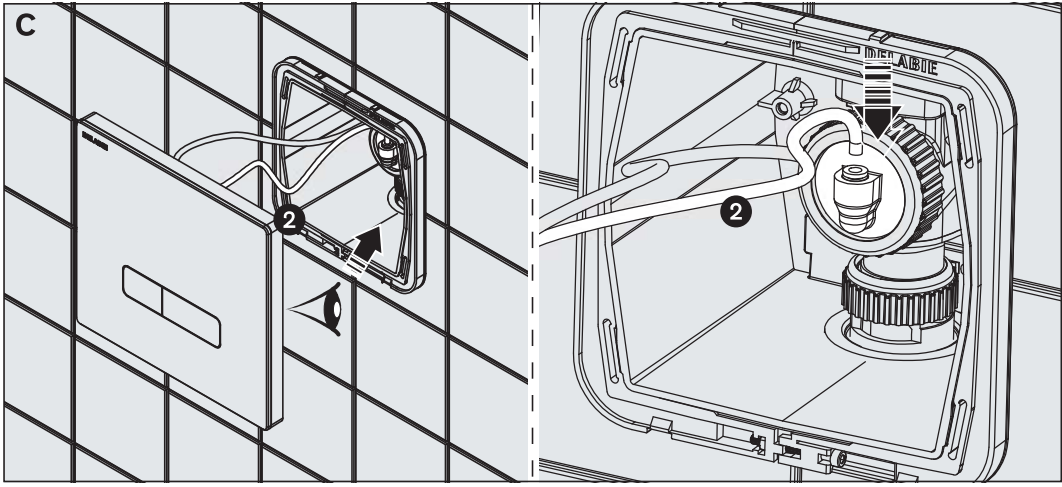
763040

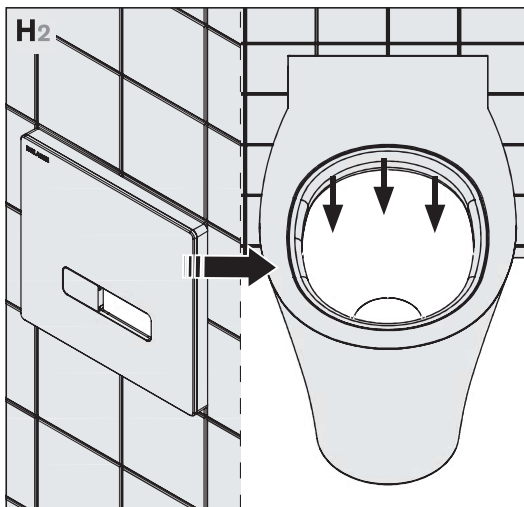
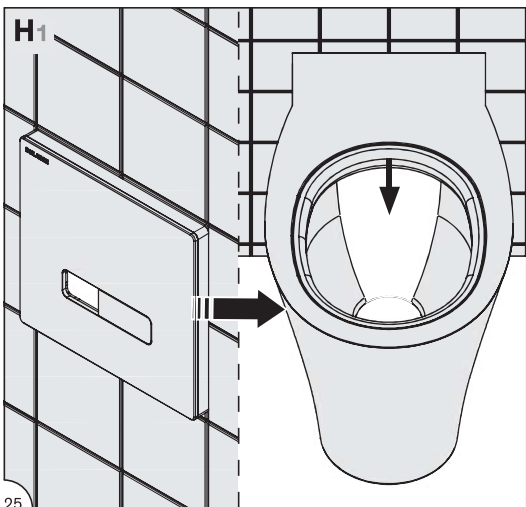
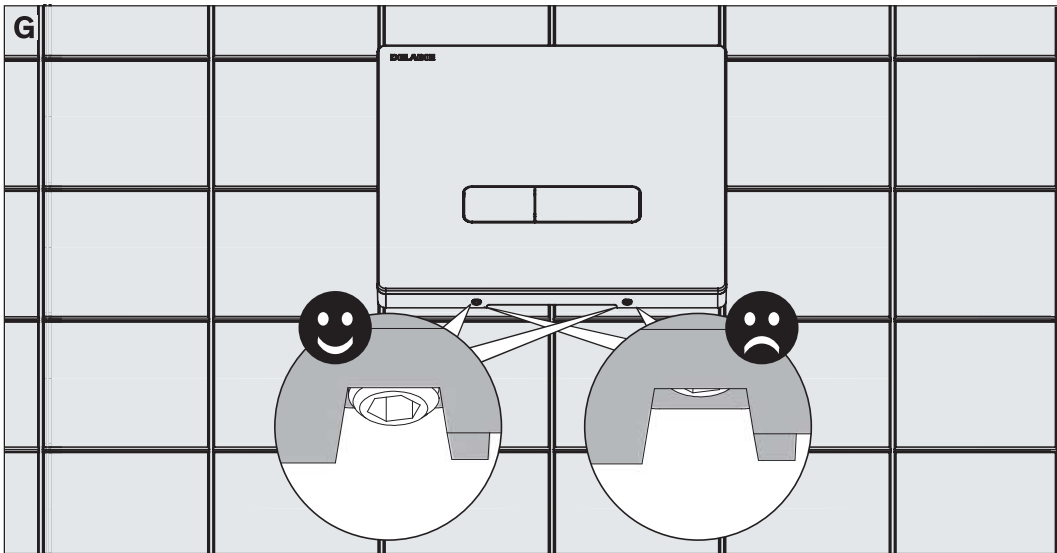
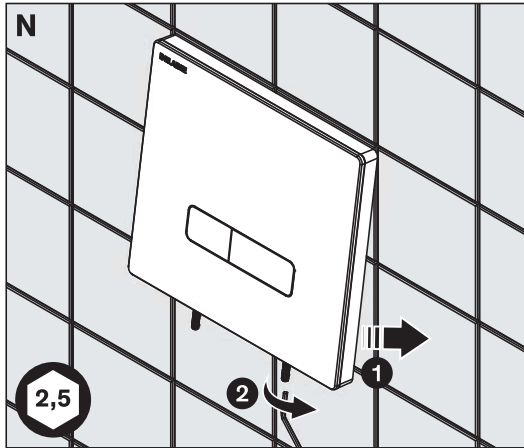
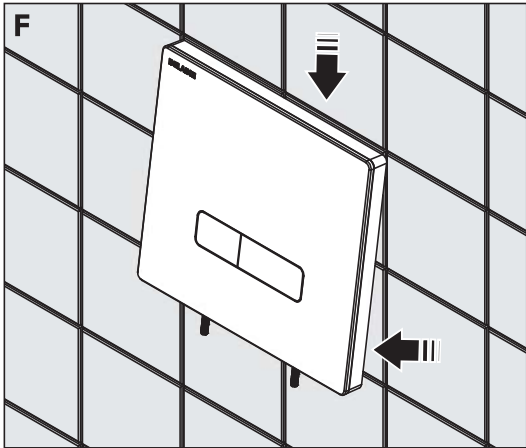


763041

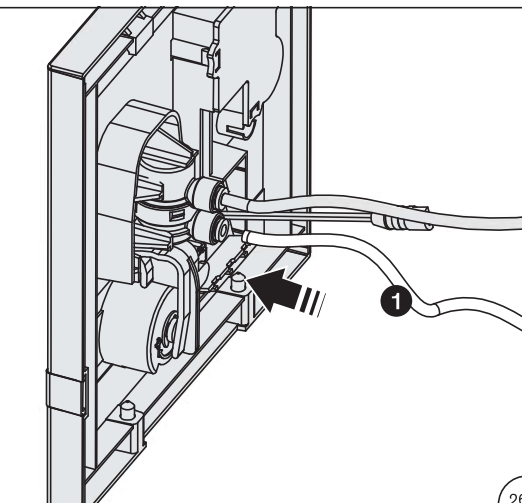
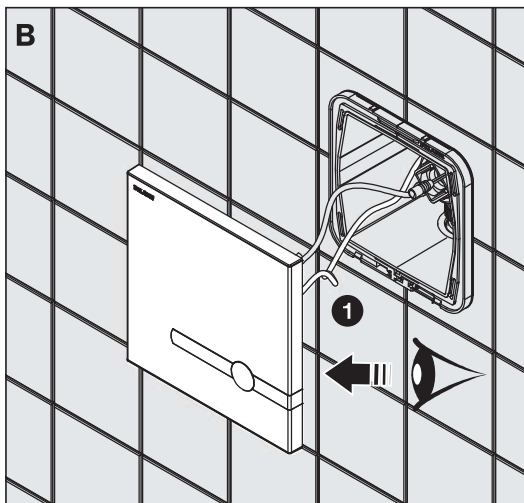
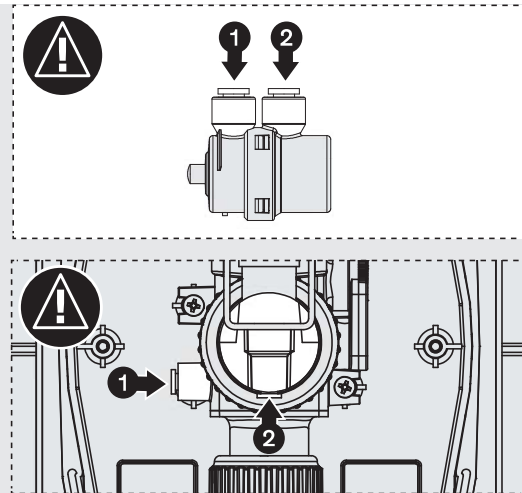
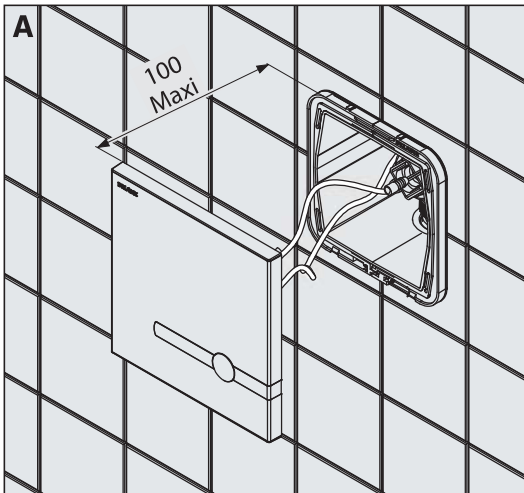
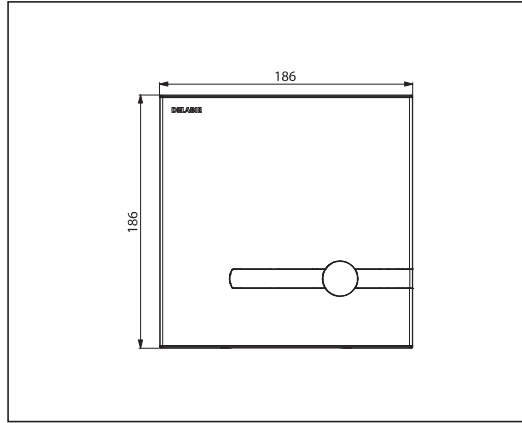
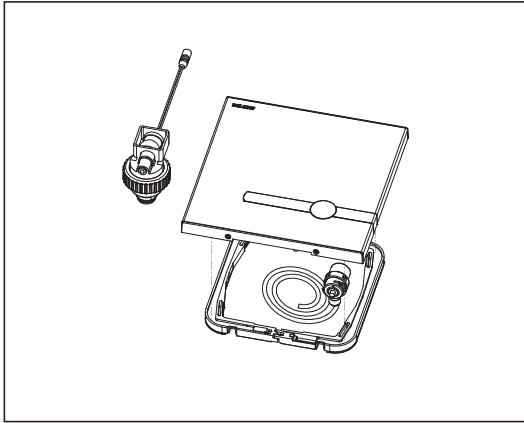
Kit 2 : 763030

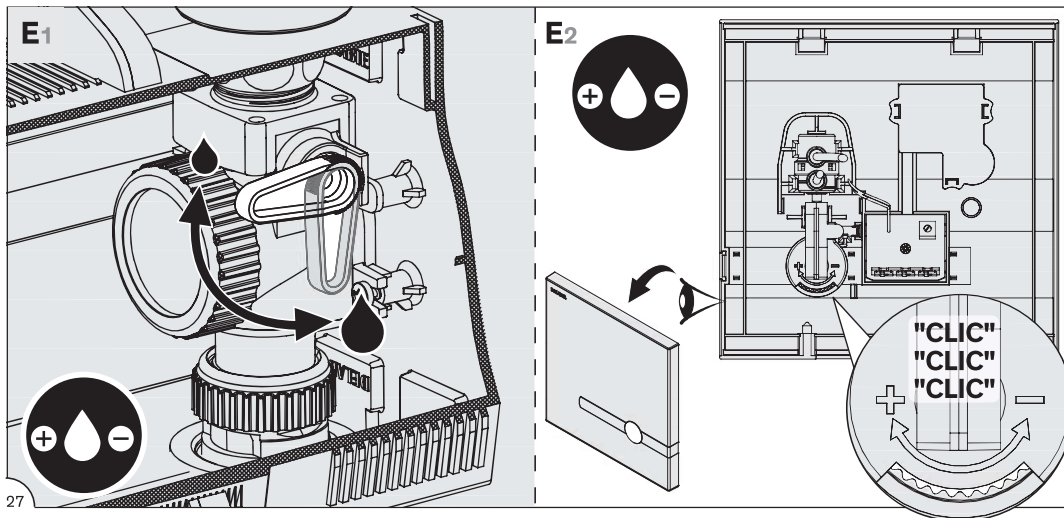
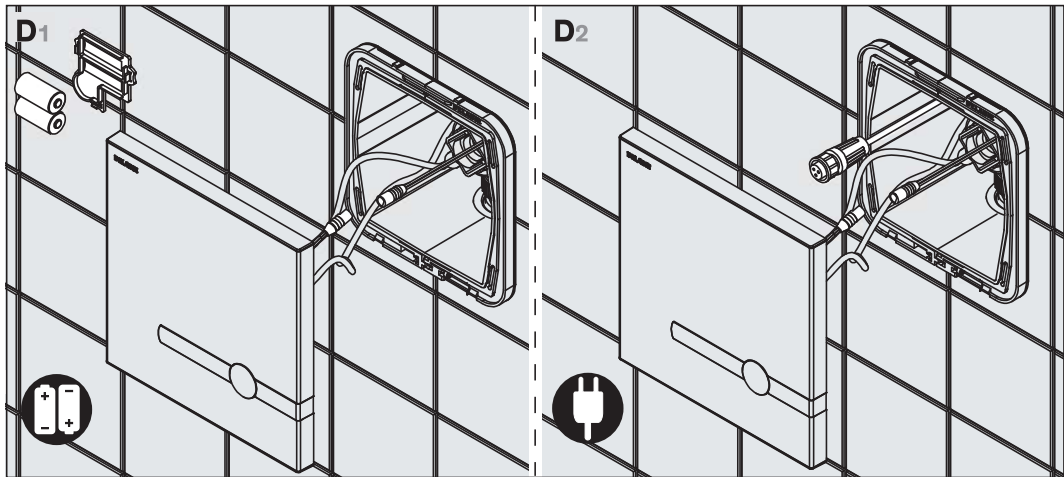
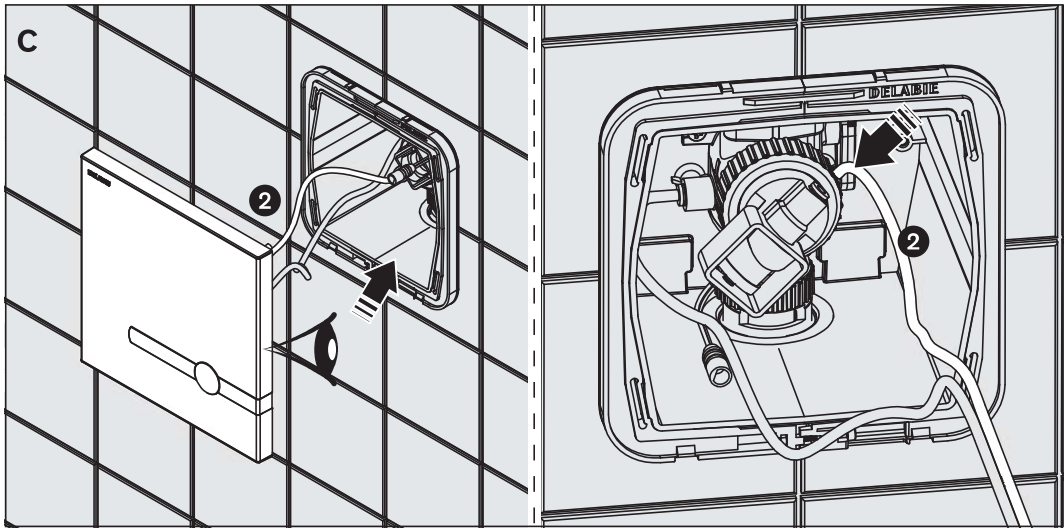


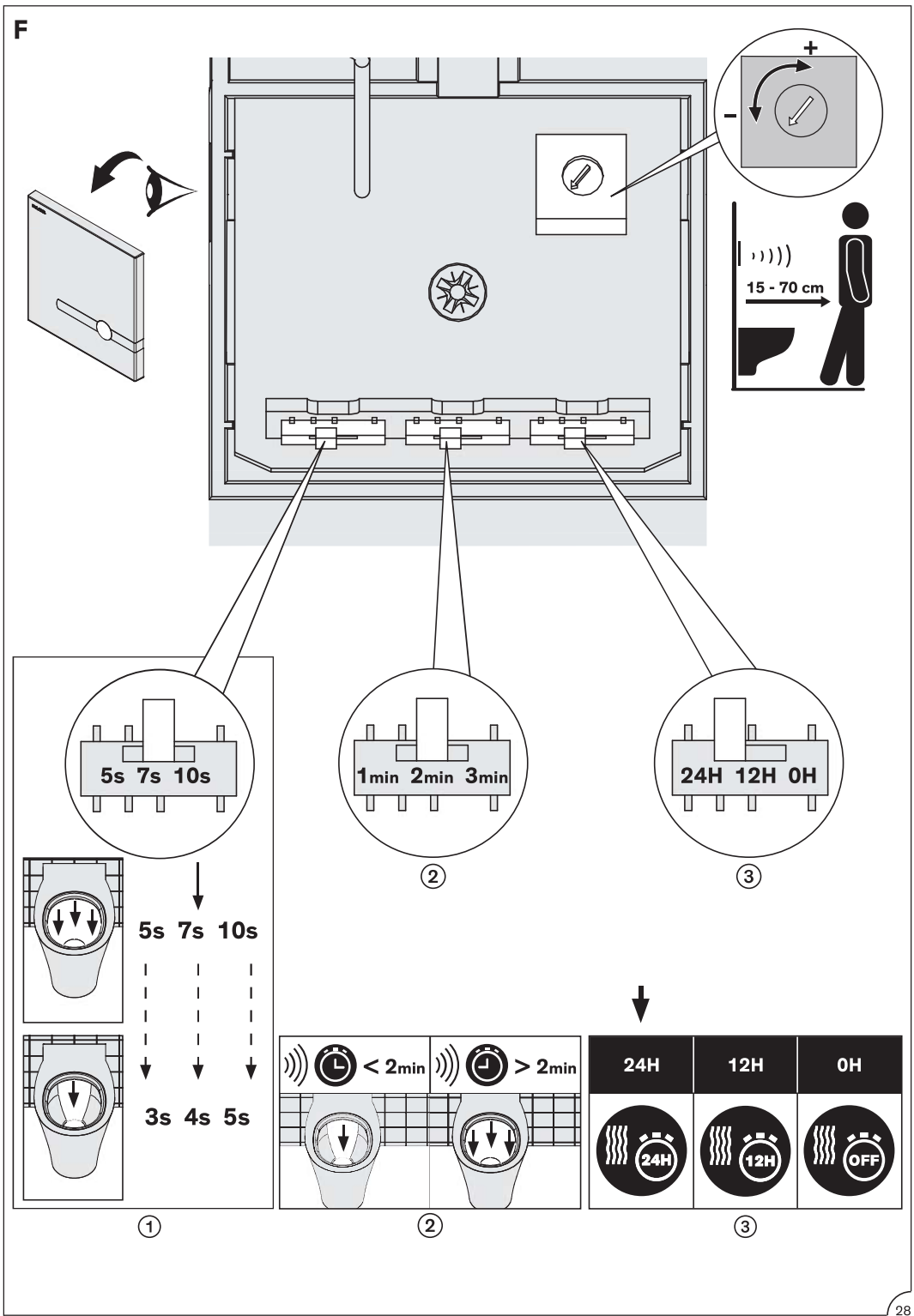


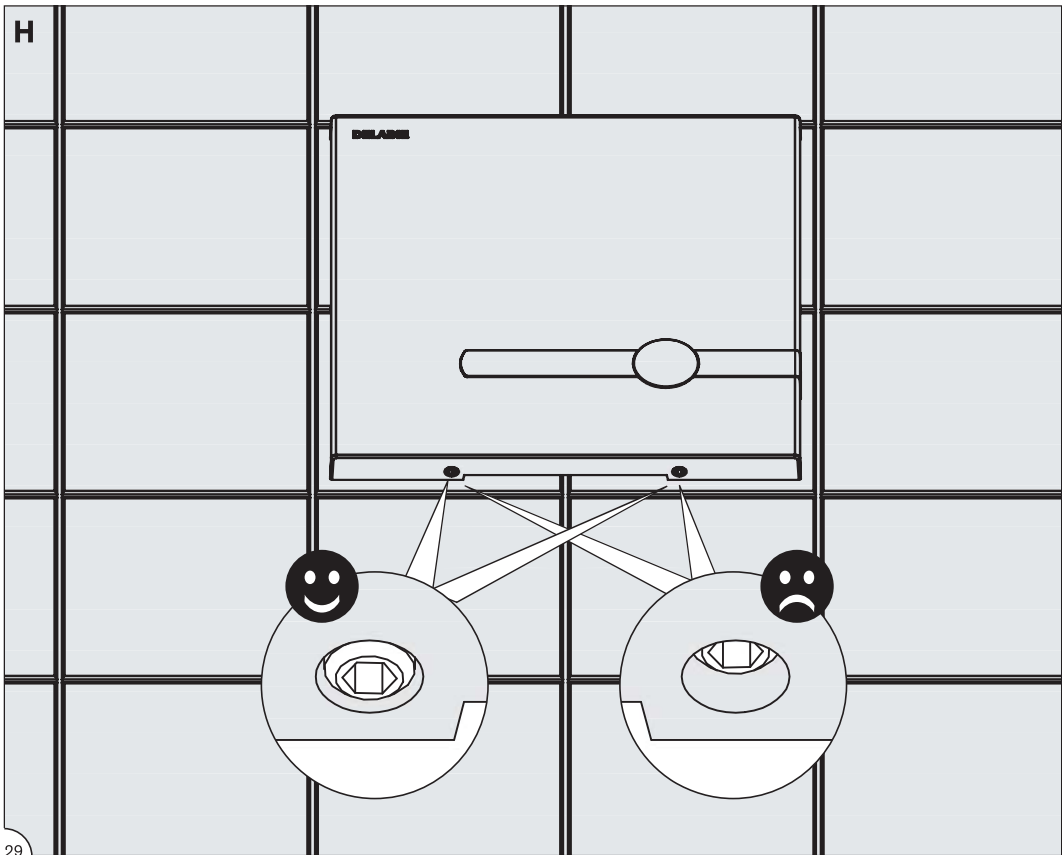
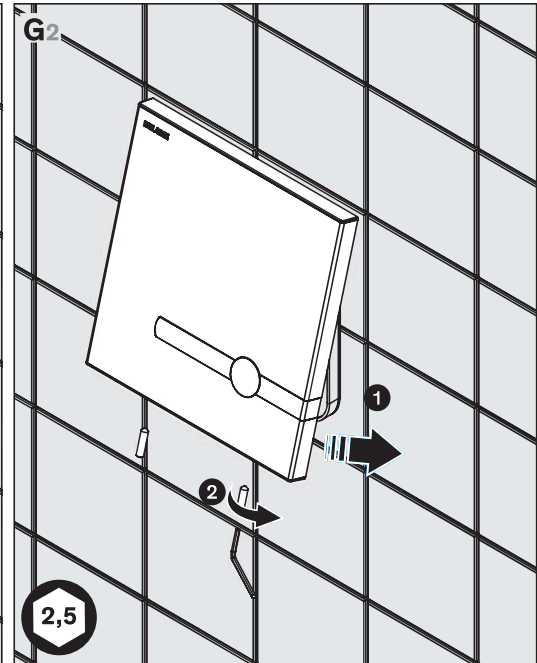
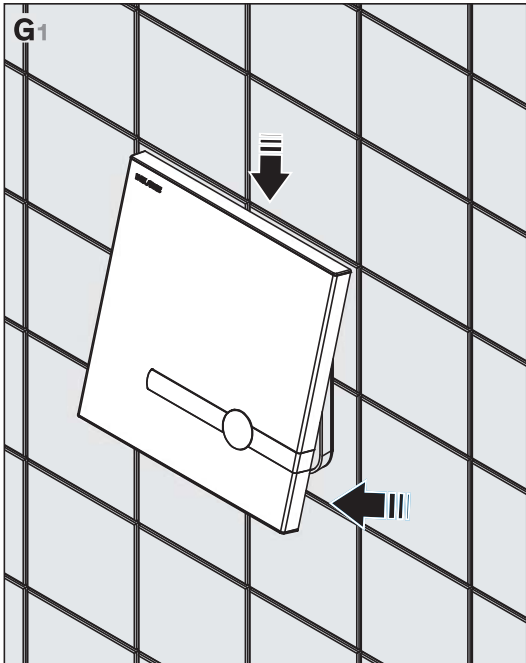


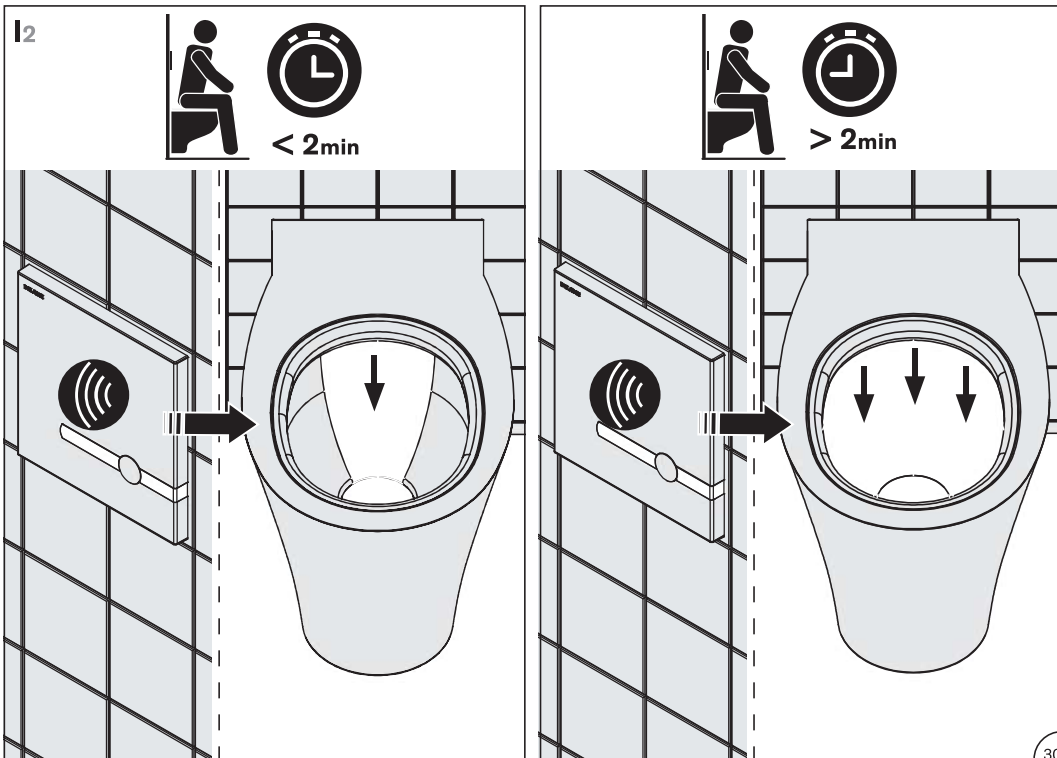
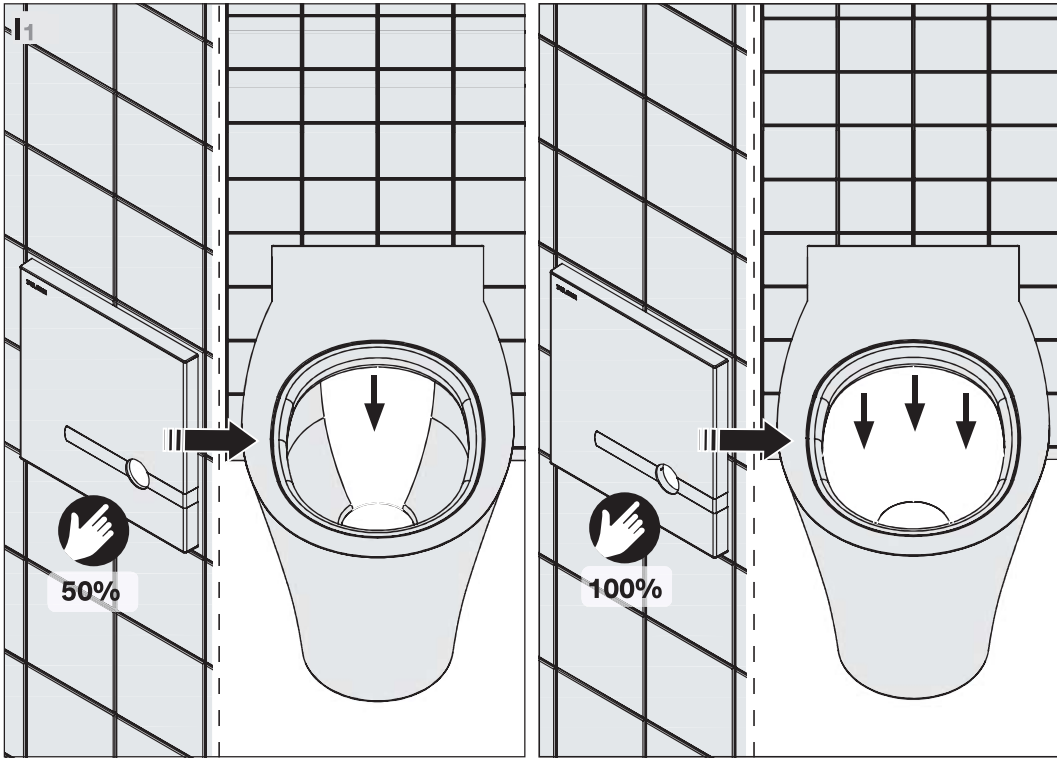
Kit 2 : 464000 - 464006





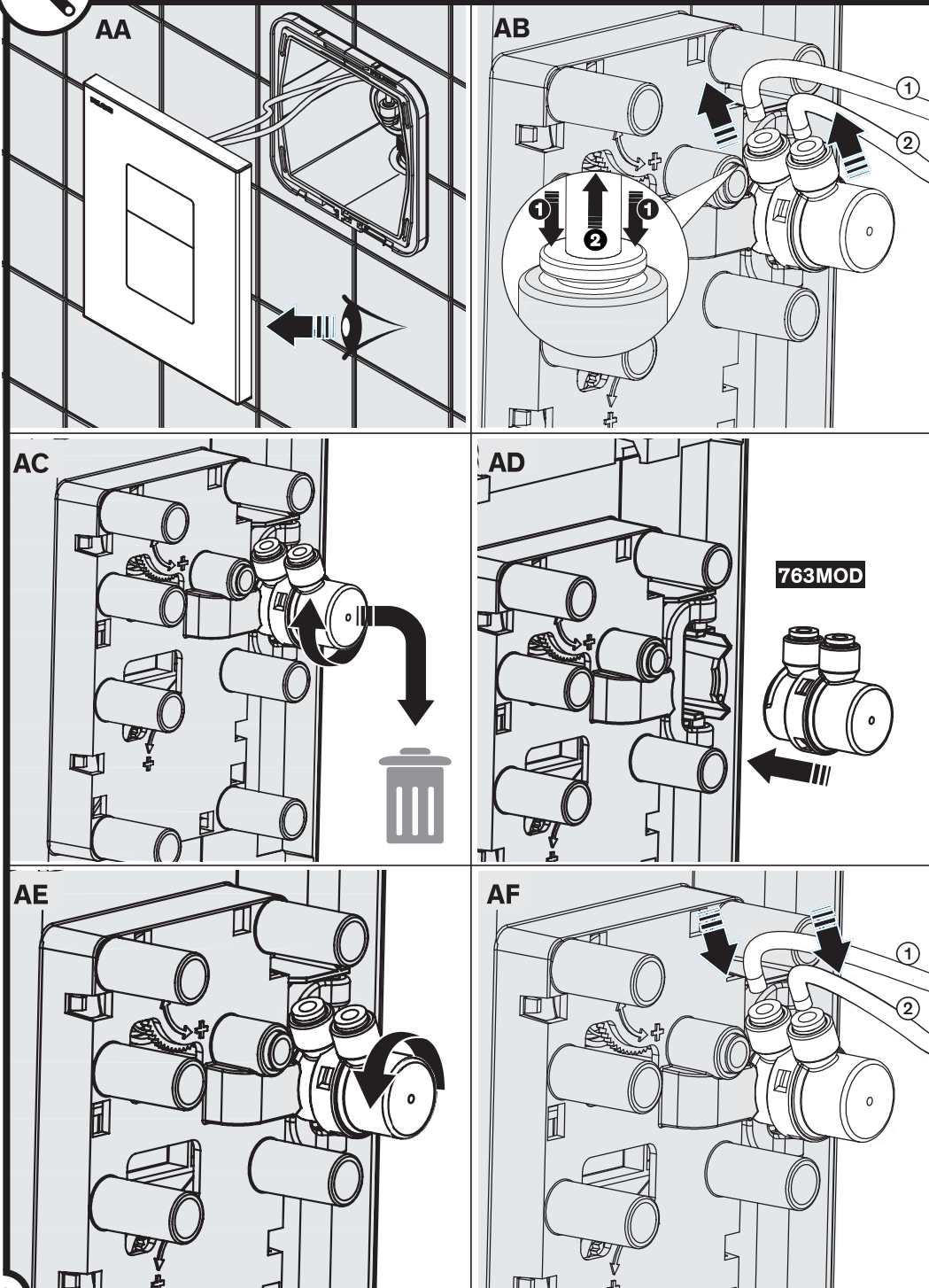






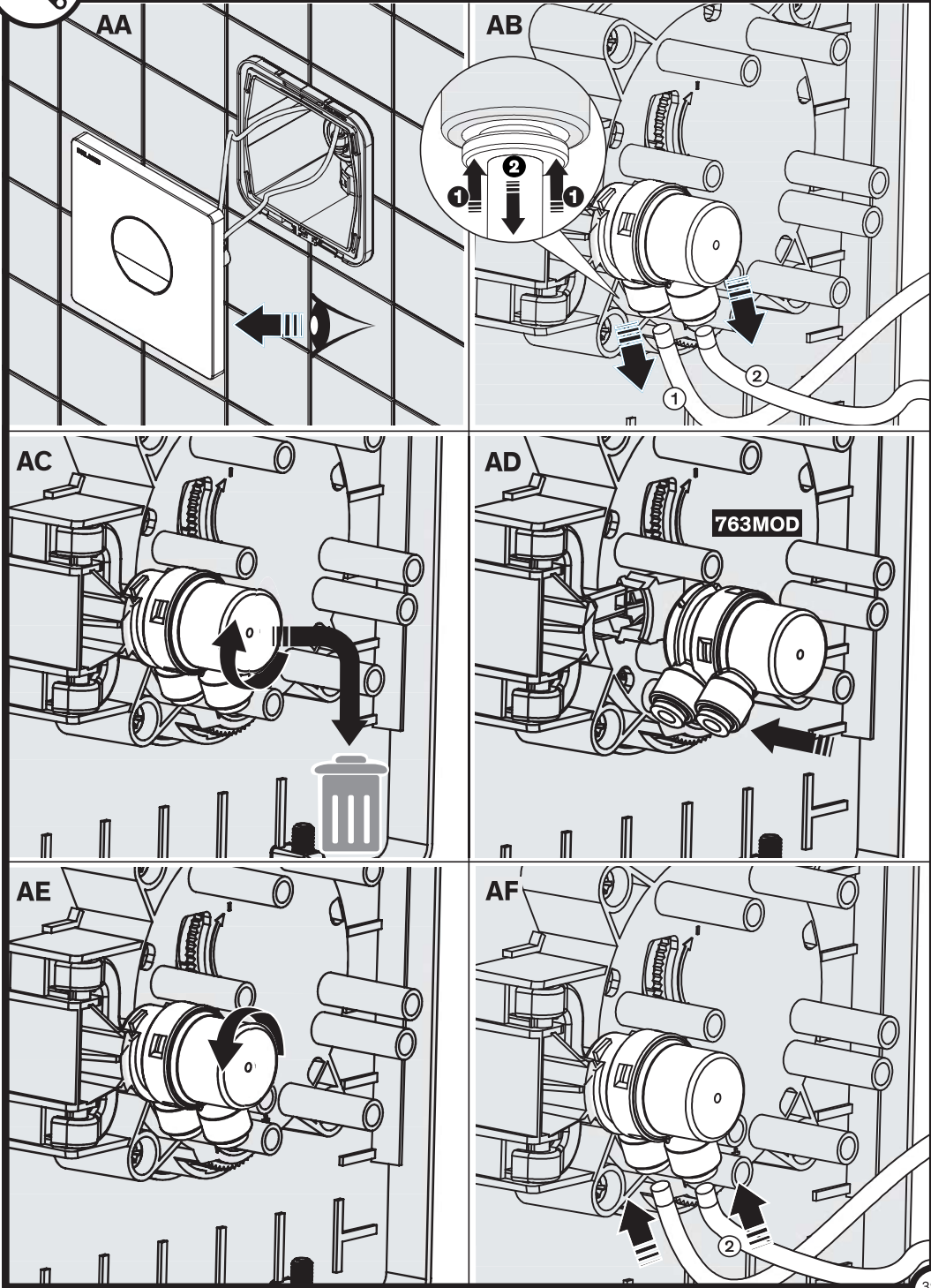


763000



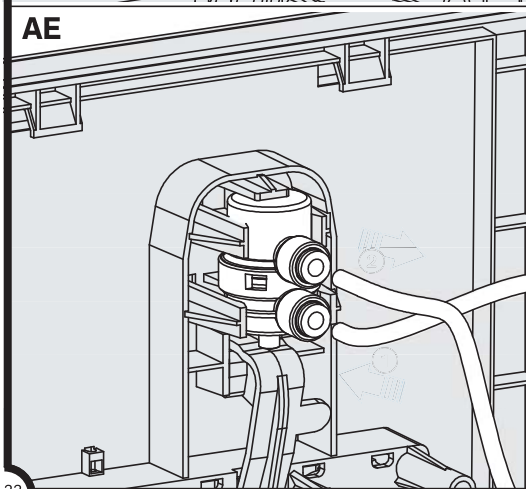
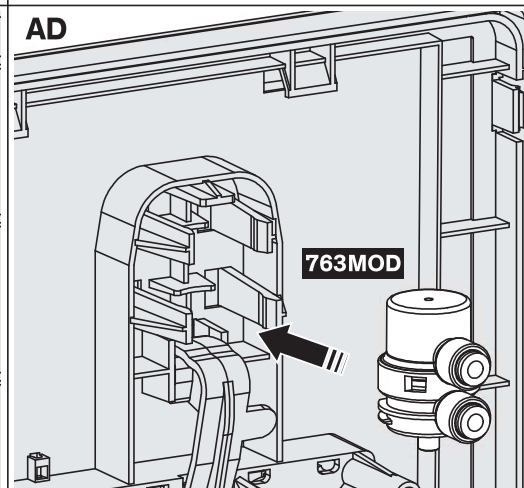
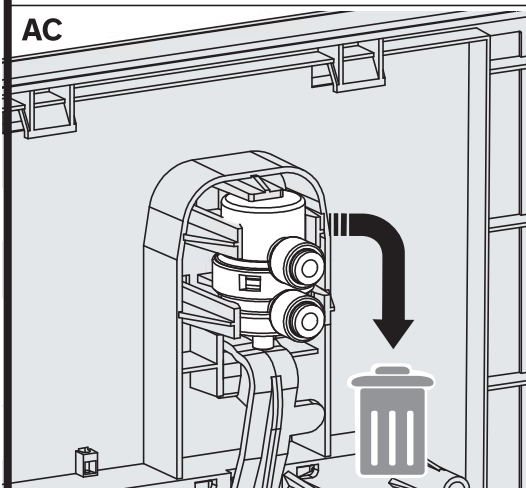
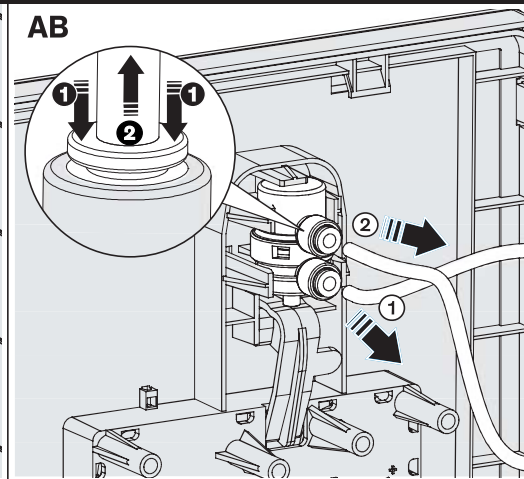
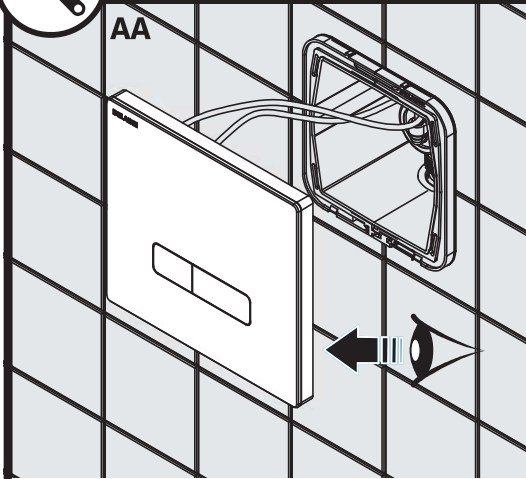


763040 - 763041



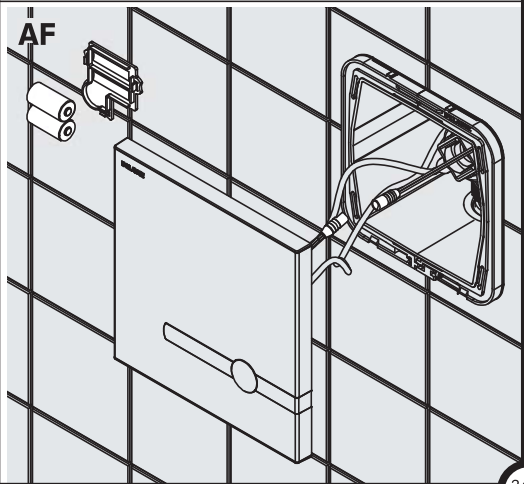
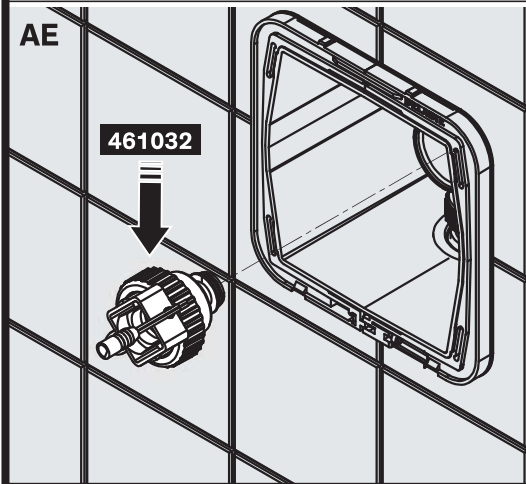
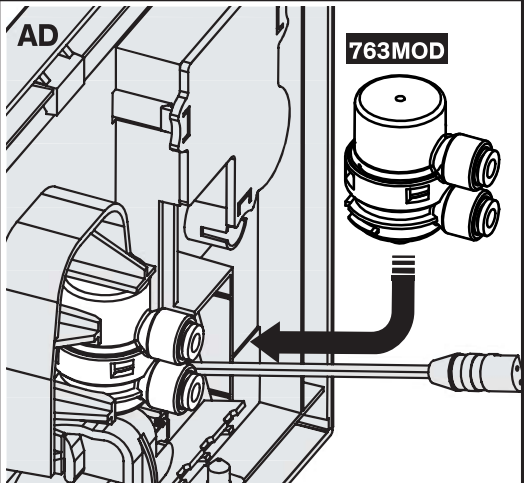
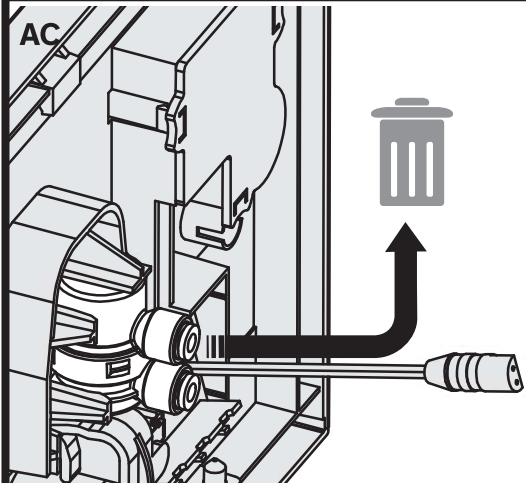
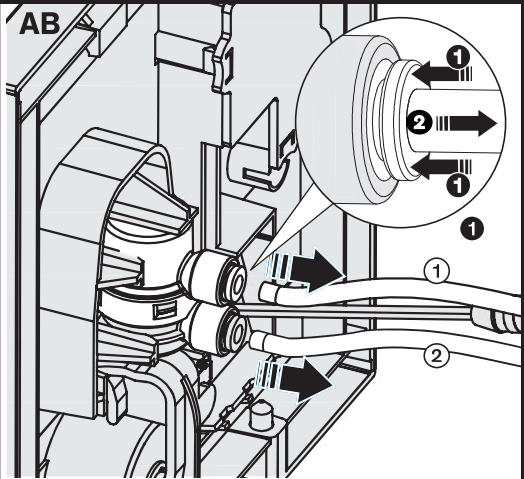
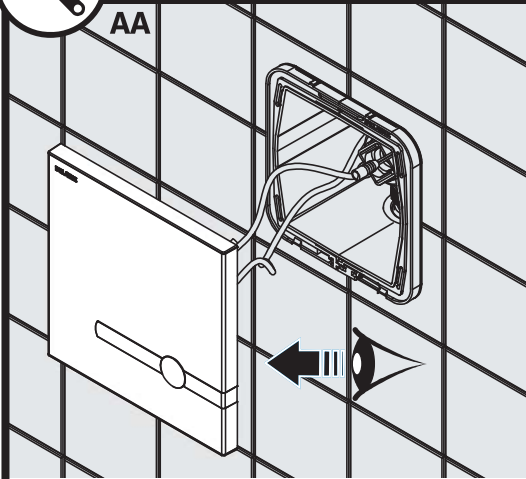


763030





464000 - 464006



FONCTIONNEMENT DES VERSIONS TEMPORISÉES

FR

- 763BOX+763000, 763BOX+763040, 763BOX+763041 et 763BOX+763030 : déclenchement par pression sur le bouton poussoir antiblocage et fermeture automatique temporisée.

FONCTIONNEMENT DES VERSIONS BICOMMANDE (Fig. F page 28)

- 464SBOX+464000 et 464PBOX+464006 : 2 modes de fonctionnement.
 - déclenchement volontaire par pression sur le bouton poussoir antiblocage et fermeture automatique temporisée. Le bouton poussoir est autonome : la chasse fonctionne même en cas de coupure de courant.
 - ou déclenchement automatique au départ de l'utilisateur.
Détection électronique infrarouge : prise en compte après 10 secondes de présence.
- Temps de rinçage de 7 secondes (réglable à 5 ou 10 secondes en fonction du volume de chasse souhaité et de la taille de la cuvette) (**image ①**).
- Rinçage automatique "intelligent" (**image ②**) :
 - Temps d'utilisation inférieur à 2 min : petit volume de chasse
 - Temps d'utilisation supérieur à 2 min : gros volume de chasseLe délai est réglable à 1 ou 3 minutes.
- En cas de redémarrage du produit (30 secondes sans alimentation), il se réinitialise et fait un cycle d'ouverture et de fermeture de l'électrovanne. La LED rouge n'est visible en clignotement sur la façade que lors des 10 premières détections d'un utilisateur.
- Pour éviter les interférences des rayons IR, ne pas installer deux robinetteries automatiques face à face, face à un miroir ou un objet brillant.
- Rinçage périodique hygiénique toutes les 24 H après la dernière utilisation (réglable à 12 H ou désactivable) (**image ③**).

INSTALLATION

- Pression : 1 bar (100kPa) à 5 bar (500 kPa), recommandée à 3 bar (300 kPa).
- Débit de fonctionnement : 1 l/sec à 3 bar.
- L'installation électrique doit être conforme aux normes de votre pays (en France NF C15-100).

L'ÉTANCHÉITÉ DES JOINTS ENTRE LA PLAQUE DE COMMANDE ET LE MUR DOIT ÊTRE VÉRIFIÉE AU MOINS UNE FOIS PAR AN ET AUSSI SOUVENT QUE NÉCESSAIRE. EN CAS DE BESOIN, LES REMPLACER.

Le non-respect de ces conseils risque d'engendrer des infiltrations dans le mur, pour lesquelles DELABIE ne pourrait être tenu responsable.

EN CAS DE DOUTE, APPELEZ L'ASSISTANCE TECHNIQUE DELABIE AU +33 (0)3 22 60 22 74.

Nos produits fonctionnent avec eaux grises et eaux de pluies sous réserve que ces dernières soient filtrées et qu'elles présentent un pH compris entre 6.5 et 9.5.

RÉGLAGE DU DÉBIT

Le débit est réglable de 2 à 9 L :

- Versions temporisées 763BOX+763000, 763BOX+763040, 763BOX+763041 et 763BOX+763030 : tourner la manette du robinet d'arrêt (**Fig. D1** page 17, 20 ou 24) ainsi que les molettes situées derrière la plaque de commande (**Fig. E1** et **E2** page 17, 20 ou 24) jusqu'à obtention du volume de chasse désiré.
- Versions bicommande 464SBOX+464000 et 464PBOX+464006 : tourner la manette du robinet d'arrêt (**Fig. E1** page 27) ainsi que la molette située derrière la plaque de commande (**Fig. E2** page 27) et/ou la durée de rinçage (**Fig. F, image ③** page 28) jusqu'à obtention du volume de chasse désiré.

RAPPEL

FR

- **Nos robinetteries doivent être installées par des installateurs professionnels** en respectant les réglementations en vigueur, les prescriptions des bureaux d'études fluides et les règles de l'art.
- **Respecter le diamètre des tuyauteries** permet d'éviter les coups de bélier ou pertes de pression/débit (voir le tableau de calcul du catalogue et en ligne sur www.delabie.fr).
- **Protéger l'installation** avec des filtres, antibéliers ou réducteurs de pression diminue la fréquence d'entretien (pression conseillée 1 à 5 bar (100 à 500 kPa)).
- **Poser des vannes d'arrêt** à proximité des robinets facilite l'intervention d'entretien.
- Les canalisations, filtres, clapets antiretour, robinets d'arrêt, de puisage, cartouche et tout appareil sanitaire doivent être vérifiés au moins une fois par an et aussi souvent que nécessaire.

ENTRETIEN & NETTOYAGE

- **Nettoyage du chrome, de l'aluminium et de l'inox** : ne jamais utiliser d'abrasifs ou tout autre produit à base de chlore ou d'acide. Nettoyer à l'eau légèrement savonneuse avec un chiffon ou une éponge.
- **Mise hors gel** : purger les canalisations et actionner plusieurs fois la robinetterie pour la vider de son contenu d'eau. En cas d'exposition prolongée au gel, nous recommandons de démonter les mécanismes et de les stocker à l'abri.

Service Après-Vente :

Tél. : + 33 (0)3 22 60 22 74 - e-mail : sav@delabie.fr

Notice disponible sur : www.delabie.fr